



## Single Cab

This is the all-round workhorse you can always rely on. You have all the technology and comfort you want up-front and an exceptional load capability in the back.

### XL

Ford SYNC® connectivity system with Emergency Assistance, Bluetooth®, hands free phone and voice control

USB/iPod integration

4.2" colour multi-function display

Cruise control with steering wheel mounted buttons

Adjustable Speed Limiter

Electronic Power Assisted Steering (EPAS)

Power windows and mirrors

eLocking Rear Differential (4x2 Hi-Rider and 4x4 models only)

Auto Stop/Start (4x2 Hi-Rider and 4x4 manual models only)

Dynamic Stability Control (DSC)

Emergency Brake Assist

Auto on/off headlamps

Single zone manual air conditioning

Inner and Outer tie downs on Pick-up models

Driver and front passenger airbags

Front Seat side and curtain airbags

16" Steel Wheels

Load Box Illumination on Pick-up models

Rear View Camera (Pick-up models only)

Rear Parking Sensors (Pick-up models only)

### XL Plus

Ford SYNC® connectivity system with Emergency Assistance, Bluetooth®, hands free phone and voice control

USB/iPod integration

3.5" ice blue multi-function display

Cruise control with steering wheel mounted buttons

eLocking Rear Differential

Dynamic Stability Control (DSC)

Emergency Brake Assist

Auto on/off headlamps

Single zone manual air conditioning

Daytime running lights

Heavy Duty canvas seat covers

Towbar

17" Steel Wheels with all-terrain tyres

Expanded wiring harness with 4-switch auxiliary bezel

Second battery





## Super Cab

The Super Cab is super-roomy, with two conventional front doors and two rear panel doors that open to the rear, and without a fixed B-pillar, you have easy access to the rear of the cab and the space behind the front seats.

### XL

Ford SYNC® connectivity system with Emergency Assistance, Bluetooth®, hands free phone and voice control

USB/iPod integration

4.2" colour multi-function display

Cruise control with steering wheel mounted buttons

Adjustable Speed Limiter

Electronic Power Assisted Steering (EPAS)

Power windows and mirrors

eLocking Rear Differential (4x2 Hi-Rider and 4x4 models only)

Auto Stop/Start(4x2 Hi-Rider and 4x4 manual models only)

Dynamic Stability Control (DSC)

Emergency Brake Assist

Auto on/off headlamps

Single zone manual air conditioning

230V power inverter

12V auxiliary power socket x3

Load Box Illumination on Pick-up models

Inner and Outer tie downs on Pick-up models

Driver and front passenger airbags

Side Front seat and front side curtain airbags

16" Steel Wheels

Rear View Camera (Pick-Up models only)

Rear Parking Sensors (Pick-Up models only)

### XLT Includes XL features plus:

Ford SYNC® 3 with voice controlled SatNav

DAB Radio

8" colour touch screen

Rain sensing wipers

Projector Headlamps

Tyre Pressure Monitoring System

Dual Zone climate control

Bedliner with 12V socket

Load Box Illumination in Chrome Sports Bar

Cooled Centre Console

Towbar

17" Alloy Wheels

Privacy Glass

Heated exterior mirrors

Electrochromatic rear view mirror

Dual colour 4.2" instrumentation screens

Front Parking Sensors

Plastic Side Steps

### Available in optional XLT Technology Pack:

Adaptive Cruise Control with Forward Collision Alert

Automatic High Beam Control

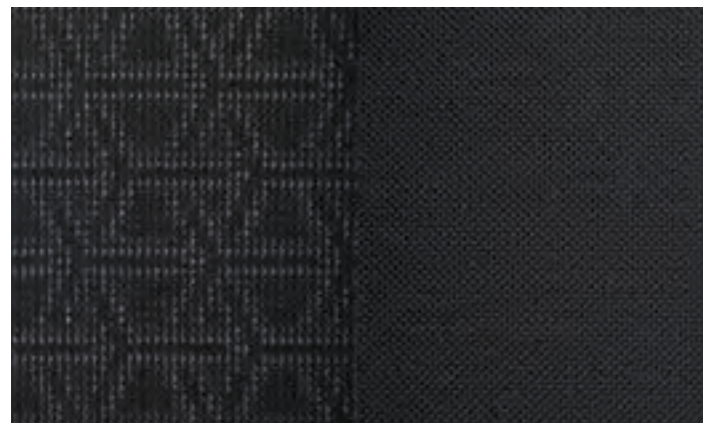
Driver Impairment Monitor

Lane Keeping Aid

Lane Departure Warning



## Interior Trims



**XL/ XL Plus/ XLS**  
Circuit Fabric in Ebony trim seats, with Pulse Fabric in Ebony bolsters.



**XLT**  
Penta Fabric in Ebony trim seats, with Catalyst Fabric in Ebony bolsters.



**Wildtrak**  
Caliber Fabric in Trak Orange trim seats, with Journey Grain Leather in Ebony bolsters.

## Wheels

### XL wheel

**4x2 XL**  
Wheel: 16" x 6.5" steel  
Tyre: P215/70 R16  
Spare Wheel: 16" x 6.5" steel

**4x2 XL Hi-Rider, 4x4 XL**  
Wheel: 16" x 7.0" steel  
Tyre: P255/70 R16  
Spare Wheel: 16" x 7" steel

**4x4 XL Plus**  
Wheel: 17" x 7.5" steel  
Tyre: P265/65 R17  
Spare Wheel: 17" x 7.5" steel



### XLS wheel

**4x4 XLS**  
Wheel: 16" x 7.0" alloy  
Tyre: P255/70 R16  
Spare wheel: 16" x 7.0" steel



### XLT wheel

**4x2 XLT Hi-Rider**  
Wheel: 17" x 8.0" alloy  
Tyre: P265/65 R17  
Spare wheel: 17" x 7.5" steel

**4x4 XLT**  
Wheel: 17" x 8.0" alloy  
Tyre: P265/65 R17  
Spare wheel: 17" x 7.5" steel



### Wildtrak wheel

**4x4 Wildtrak**  
Wheel: 18" x 8.0" alloy  
Tyre: P265/60 R18  
Spare wheel: 18" x 8.0" alloy



## Mechanical Specifications

Engine	2.2L Diesel				3.2L Diesel					
Engine type	4 Cylinder				5 Cylinder					
Engine size (cm <sup>3</sup> )	2198				3198					
Compression ratio	15.7:1				15.7:1					
Maximum power	118kW @ 3200rpm				147kW @ 3000rpm					
Maximum torque	385Nm @ 1600-2500rpm				470Nm @ 1750-2500rpm					
No. of valves	16				20					
Bore x stroke (mm)	86 x 94.6mm				89.9 x 100.76mm					
Fuel Management system	Turbocharged direct common rail injection				Turbocharged direct common rail injection					
Transmissions/Ratios	6-speed manual		6-speed auto		6-speed manual		6-speed auto			
1st	5.441		4.171		5.441		4.171			
2nd	2.839		2.342		2.839		2.342			
3rd	1.721		1.521		1.721		1.521			
4th	1.223		1.143		1.223		1.143			
5th	1.000		0.867		1.000		0.867			
6th	0.794		0.691		0.794		0.691			
Reverse (6-Speed manual)	4.935		3.400		4.935		3.400			
4x4 high/low range transfer case ratios	2.2L Diesel				3.2L Diesel					
High range	1.000:1				1.000:1					
Low range	2.717:1				2.717:1					
Final drive ratios	6-speed manual		6-speed auto		6-speed manual		6-speed auto			
4x2 Low Rider	3.15		-		-		-			
4x2 Hi-Rider	3.55		3.73		3.55		3.73			
4x4	3.55		3.73		3.55		3.73			
Fuel tank capacity (L)	2.2L Diesel				3.2L Diesel					
Fuel tank capacity (L)	80				80					
Fuel consumption – 4x2 Low Rider <sup>1</sup>	2.2L Diesel				3.2L Diesel					
Engine	Manual		Automatic			Manual		Automatic		
Model	XL		XL			XLT		XLT		
Single – Fuel economy (L/100km)	6.5		-			-		-		
CO <sub>2</sub> emissions (g/km)	169		-			-		-		
Super – Fuel economy (L/100km)	-		-			-		-		
CO <sub>2</sub> emissions (g/km)	-		-			-		-		
Double – Fuel economy (L/100km)	-		-			-		-		
CO <sub>2</sub> emissions (g/km)	-		-			-		-		
Fuel consumption – 4x2 High Rider <sup>1</sup>	2.2L Diesel				3.2L Diesel					
Engine	Manual		Automatic			Manual		Automatic		
Model	XL		XL			XLT		XLT		
Single – Fuel economy (L/100km)	6.8		7.8			-		-		
CO <sub>2</sub> emissions (g/km)	180		203			-		-		
Super – Fuel economy (L/100km)	-		7.8			-		8.2		
CO <sub>2</sub> emissions (g/km)	-		203			-		216		
Double – Fuel economy (L/100km)	6.8		7.8			8.1		8.2		
CO <sub>2</sub> emissions (g/km)	180		203			215		216		
Fuel consumption – 4x4 <sup>1</sup>	2.2L Diesel				3.2L Diesel					
Engine	Manual		Automatic			Manual		Automatic		
Model	XL		XL			XL Plus		XLS		
Single – Fuel economy (L/100km)	-		8.3			-		-		
CO <sub>2</sub> emissions (g/km)	-		218			-		-		
Super – Fuel economy (L/100km)	-		8.3			-		8.7		
CO <sub>2</sub> emissions (g/km)	-		218			-		229		
Double – Fuel economy (L/100km)	7.1		8.0			8.7		8.7		
CO <sub>2</sub> emissions (g/km)	185		209			229		229		
Maximum Braked Towing Capacity <sup>2</sup> (kgs) (Maximum unbraked towing capacity is 750kg for all models)	2.2L Diesel				3.2L Diesel					
Engine	Manual		Automatic			Manual		Automatic		
Transmission/Model	Manual		Automatic			Manual		Automatic		
4x2	2500		-			-		-		
4x2 Hi-Rider	3500		3500			3500		3500		
4x4	3500		3500			3500		3500		
Maximum Gross Combination Mass (kgs)	2.2L Diesel				3.2L Diesel					
4x2	5425				-					
4x2 Hi-Rider	6000				6000					
4x4	6000				6000					

**Note:** All spare wheel tyres match vehicle model road tyres.

<sup>1</sup> Fuel consumption and emissions as per ADR 81/02 (combined cycle) and to be used for vehicle comparison purposes only. It is unlikely that this fuel consumption figure will be achieved in real world driving conditions. Actual fuel consumption will depend on many factors including the driver's habits, prevailing conditions and the vehicle's equipment, condition and use. <sup>2</sup> Braked towing capacity when fitted with a Genuine Ford Tow pack and accessory Tow Ball, subject to State and Territory towing regulations. The weight of the vehicle must not exceed the Gross Vehicle Mass (GVM). The combined weight of the fully loaded vehicle and trailer must not exceed the Gross Combination Mass (GCM). Maximum individual axle loads must not be exceeded. Tow ball downforce must be taken into account when calculating payload. Tow ball download must be a minimum of 10% of the towed weight for all model variants. For further details please refer to the Owner's Manual.

## 4x2 Specifications and Options

Model	XL Single C/C 2.2 D	XL Single C/C HR 2.2 D	XL Single P/U 2.2 D	XL Super C/C HR 2.2 D	XLT Super P/U HR 3.2 D	XL Double C/C HR 2.2 D	XL Double P/U HR 2.2 D <sup>1</sup>	XLT Double P/U HR 3.2 D
<b>Safety, Security &amp; Driver Assistance</b>								
3 point lap sash seat belt – All positions	S	S	S	S	S	S	S	S
Adaptive Cruise Control with Forward Collision Alert <sup>2</sup>	-	-	-	-	P	-	-	P
Adjustable Speed Limiter	S	S	S	S	S	S	S	S
Airbags – Driver and front passenger	S	S	S	S	S	S	S	S
Airbags – Front seat side	S	S	S	S	S	S	S	S
Airbags – Side curtain	S	S	S	S	S	S	S	S
Alarm with perimeter, interior motion and vehicle inclination sensors	S	S	S	S	S	S	S	S
Beltminder™ – Driver and front passenger	S	S	S	S	S	S	S	S
Cruise Control with steering wheel mounted buttons	S	S	S	S	S	S	S	S
Driver Impairment Monitor	-	-	-	-	P	-	-	P
Emergency Assistance <sup>1</sup>	S	S	S	S	S	S	S	S
Hill Descent Control <sup>2</sup>	-	-	-	-	-	-	-	-
Lane Departure Warning with Lane Keeping Aid <sup>2</sup>	-	-	-	-	P	-	-	P
eLocking Rear Differential	-	S	-	S	S	S	S	S
MyKey®	-	-	-	-	S	-	-	S
Park Sensors – Front	-	-	-	-	S	-	-	S
Park Sensors – Rear	-	-	S	-	S	-	S	S
Rear View Camera	-	-	S	-	S	-	S	S
Remote keyless entry – 1 Fob	S	S	S	S	-	S	S	-
Remote keyless entry – 2 Fob	-	-	-	-	S	-	-	S
Tyre pressure monitoring system	-	-	-	-	S	-	-	S
Volumetric Alarm with Battery Backup system	S	S	S	S	S	S	S	S
Dynamic Stability Control (DSC) incorporating ABS • Hill Launch Assist • Trailer Sway Control • Load Adaptive Control • Emergency Brake Assist • Roll Over Mitigation Emergency brake light • Traction Control System								
<b>Comfort and Convenience</b>								
2 child seat upper anchorage points	-	-	-	S	S	S	S	S
2 front auxiliary 12V power outlets	S	S	S	S	S	S	S	S
230V inverter in rear console	-	-	-	S	S	S	S	S
Ambient Lighting	-	-	-	-	-	-	-	-
Auto on/off headlamps	S	S	S	S	S	S	S	S
Centre Console – Single lid with 2 cupholders & coin storage	S	S	S	S	S	S	S	S
Climate Control Dual Zone	-	-	-	-	S	-	-	S
Climate Control Single Zone manual	S	S	S	S	-	S	S	-
Cooled Console	-	-	-	-	S	-	-	S
Dual colour 4.2" instrumentation screens	-	-	-	-	S	-	-	S
Electrochromatic Rear View Mirror	-	-	-	-	S	-	-	S
Floor Coverings – Carpet	-	-	-	-	S	-	-	S
Floor Coverings – Vinyl	S	S	S	S	-	S	S	-
Floor Mats – Driver only	-	-	-	-	S	-	-	S
Leather wrapped steering wheel & gear knob	-	-	-	-	S	-	-	S
Manual Day/Night Inside Rear View Mirror	S	S	S	S	-	S	S	-
Power Front Windows (Auto Driver)	S	S	S	S	S	S	S	S
Power Rear Windows	-	-	-	-	-	S	S	S
Rain Sensing Windscreen Wipers	-	-	-	-	S	-	-	S
Rear auxiliary 12V power outlet	-	-	-	S	S	S	S	S
Rear Window Defrost	-	-	-	S	S	S	S	S
<b>Audio And Communication</b>								
4.2" Colour Multi-Function Display	S	S	S	S	-	S	S	-
8" Colour Touch Screen	-	-	-	-	S	-	-	S
4 Speakers (2 Tweeters, 2 Woofers)	S	S	S	-	-	-	-	-
6 Speakers (2 Tweeters, 4 Woofers)	-	-	-	S	S	S	S	S
AM/FM Stereo Radio	S	S	S	S	S	S	S	S
USB/iPod integration <sup>3</sup>	S	S	S	S	S	S	S	S
Bluetooth® with Voice Control <sup>4</sup>	S	S	S	S	S	S	S	S
DAB Radio	-	-	-	-	S	-	-	S
Satellite Navigation with Traffic Management Channel <sup>5</sup>	-	-	-	-	S	-	-	S
Single CD Player (MP3 compatible)	S	S	S	S	S	S	S	S
SYNC® <sup>6</sup>	S	S	S	S	-	S	S	-
SYNC® 3 <sup>6</sup>	-	-	-	-	S	-	-	S
<b>Exterior</b>								
Exterior Mirrors – Black	S	S	S	S	-	S	S	-
Exterior Mirrors – Chrome	-	-	-	-	S	-	-	S
Exterior Mirrors: Power Adjustable, Power Folding, Heated, Turn Indicator	-	-	-	-	S	-	-	S
Front Mud Flaps	S	S	S	S	S	S	S	S
Rear Mud Flaps <sup>7</sup>	-	-	S	-	S	-	S	S
Front Bumper – Body Colour	S	S	S	S	S	S	S	S

1. In the event of a crash which deploys an airbag or activates the fuel pump shut off, Emergency Assistance can use a mobile phone to dial emergency services. 2. Driver-assistance features are supplemental and do not replace the driver's judgement. Function may not operate in some driving and road conditions or adverse weather. 3. iPod is a registered trademark of Apple Inc. and is used under licence. Connection cables sold separately. 4. Bluetooth® is a registered trademark of Bluetooth SIG Inc. and is used under licence. Customers should consult their Ford Dealer on the ability of their mobile phone handset to integrate with the Bluetooth® system prior to making a purchase decision. 5. Traffic information is provided through an arrangement with Intelmatics Australia Pty Ltd. Traffic information is based on data provided with the permission of one or more third parties. Should Ford's arrangement with Intelmatics Australia Pty Ltd cease for any reason, the ongoing provision of traffic information cannot be guaranteed. 6. For SYNC® compatibility, visit the [www.ford.com.au/sync](http://www.ford.com.au/sync). 7. Rear mud flaps on pick-up models only. 8. Prestige paint is an option that incurs an additional charge. 9. Rear bumper body colour,

## 4x2 Specifications and Options

Model	XL Single C/C 2.2 D	XL Single C/C HR 2.2 D <sup>1</sup>	XL Single P/U 2.2 D	XL Super C/C HR 2.2 D	XLT Super P/U HR 3.2 D	XL Double C/C HR 2.2 D	XL Double P/U HR 2.2 D <sup>1</sup>	XLT Double P/U HR 3.2 D
<b>Exterior</b> continued								
Front Fog Lamps	-	-	-	-	S	-	-	S
Grille – Black	S	S	S	S	-	S	S	-
Grille – Chrome	-	-	-	-	S	-	-	S
Plastic Side Steps with Bright Inserts	-	-	-	-	S	-	-	S
Prestige paint <sup>8</sup>	O	O	O	O	O	O	O	O
Privacy Glass	-	-	-	-	S	-	-	S
Projector headlamps	-	-	-	-	S	-	-	S
Rear Bumper – Body Colour <sup>9</sup>	-	-	S	-	-	-	S	-
Rear Bumper – Chrome Steel <sup>9</sup>	-	-	-	-	S	-	-	S
Sports Bar Chrome Tubular	-	-	-	-	S	-	-	S
Tailgate Handle – Chrome	-	-	-	-	S	-	-	S
Tailgate lock manual	-	-	S	-	S	-	S	S
Tow Bar	-	-	-	-	S	-	-	S
<b>Seating</b>								
6-way manual driver seat adjustment with lumbar support	S	S	S	S	S	S	S	S
Front Bucket Seats	S	S	S	S	S	S	S	S
<b>Factory Fitted Options</b>								
Automatic Transmission	-	O	-	S	S	S	O	O
XLT Tech Pack (Inc. Adaptive Cruise Control with Forward Collision Alert, Driver Impairment Monitor, Automatic High Beam Control, Lane Keeping Aid & Lane Departure Warning) <sup>2</sup>	-	-	-	-	O	-	-	O
<b>Vehicle Masses<sup>9a</sup></b>								
Front Axle Load (Maximum) (kg)	1325	1480	1325	1480	1480	1480	1480	1480
Gross Combined Mass Inc. Braked trailer (kg)	5425	6000	5425	6000	6000	6000	6000	6000
GVM (kg)	2925	3200	2925	3200	3200	3200	3200	3200
Kerb Weight (kg)	1659	1717	1808	1776	2053	1838	1963	2105
Payload (kg)	1265	1480	1115	1420	1145	1360	1235	1095
Rear Axle Load (Maximum) (kg)	1755	1850	1755	1850	1850	1850	1850	1850
<b>Exterior Body and Box Elements</b>								
Bedliner with 12V socket	-	-	-	-	S	-	-	S
Inner Tie Downs	-	-	S	-	S	-	S	S
Load Box Illumination	-	-	S	-	S	-	S	S
Load Rest	-	-	S	-	-	-	S	-
Outer Tie Downs	-	-	S	-	-	-	S	-
<b>Pick-up Box Dimensions (mm)</b>								
Length – at floor	-	-	2317	-	1847	-	1549	1549
Length – top of box	-	-	2253	-	1783	-	1485	1485
Pick-up Box Height – at centreline of axle	-	-	511	-	511	-	511	511
Pick-up Box Height – floor height to ground	-	-	723	-	840	-	835	835
Width – between wheelhouses	-	-	1139	-	1139	-	1139	1139
Width – pick-up box	-	-	1560	-	1560	-	1560	1560
Width of rear opening	-	-	1330	-	1330	-	1330	1330
<b>Exterior Dimensions (mm)</b>								
Overall height	1703	1800	1703	1804	1821	1815	1815	1821
Overall width (exterior mirrors extended)	2163	2163	2163	2163	2163	2163	2163	2163
Overall width (exterior mirrors folded)	1977	1977	1977	1977	1977	1977	1977	1977
Overall width (excluding mirrors)	1860	1860	1860	1860	1860	1860	1860	1860
Overall length (with rear bumper where fitted, no bull bar)	5113	5113	5362	5113	5355	5113	5362	5355
Front overhang	908	908	908	908	908	908	908	908
Rear overhang	985	985	1234	985	1226	985	1234	1226
Front track, rear track	1590	1560	1590	1560	1560	1560	1560	1560
Wheelbase	3220	3220	3220	3220	3220	3220	3220	3220
Ground clearance (unladen, mm)	201	232	201	232	237	232	232	237
Wading depth (mm)	600	800	600	800	800	800	800	800
Approach angle (unladen, degrees)	22	28	22	28	29	28	28	29
Departure angle (unladen, degrees) measured to:								
a) rear bumper on XL Pick-up models,	24	28	17	24	21	28	27	21
b) spare tyre on XL Cab Chassis models,								
c) tow bar on XLT and Wildtrak models								
Ramp breakover angle (degrees)	17	24	17	24	25	24	24	25
Turning circle (kerb to kerb)	11.9	12.7	11.9	12.7	12.7	12.7	12.7	12.7
<b>Interior Dimensions (mm)</b>								
2nd row headroom	-	-	-	938	938	986	986	986
2nd row legroom	-	-	-	796	796	902	902	902
2nd Row Shoulder Room	-	-	-	1400	1400	1430	1430	1430
Front headroom	1024	1024	1024	1024	1024	1022	1022	1022
Front legroom	1058	1058	1058	1058	1058	1058	1058	1058
Front shoulder room	1440	1440	1440	1440	1440	1440	1440	1440

S = Standard. O = Factory Option that can be ordered before a vehicle is manufactured. A = Accessory that can be added at any time. P = Part of a pack. -- = Not available.

excludes rear bumper sensor device. 10. Kerb weight and payload values quoted are based on vehicle certification data and are subject to variation. When loading vehicles, it is the operator's responsibility to ensure weight of fully loaded vehicle does not exceed GVM. Front and rear individual axle load limits are not individually exceeded. The combined weight of the fully loaded vehicle (including tow ball download when towing) and trailer does not exceed the GCM. Compliance with State and Territory towing regulations. Payload is the combined value of occupants, luggage, cargo, added options, accessories, added structures and tow ball download (when towing). Kerb Mass includes the vehicle with a full tank of fuel and all standard equipment without occupants. Additional weights of optional features, occupants, luggage, cargo, accessories, added structures and tow ball download (when towing) must be taken into account when calculating kerb weight and payload.

## 4x4 Specifications and Options

Model	XL Single C/C 3.2D	XL Plus Single C/C 3.2D	XL Super C/C 3.2D	XL Super P/U 3.2D	XLT Super P/U 3.2D	XL Double C/C 2.2D/3.2D	XL Plus Double C/C 3.2D	XL Double P/U 2.2D/3.2D	XL Plus Double P/U 3.2D	XLS Double P/U 3.2D	XLT Double P/U 3.2D	Wildtrak Double P/U 3.2D
<b>Safety, Security &amp; Driver Assistance</b>												
3 point lap sash seat belt – All positions	S	S	S	S	S	S	S	S	S	S	S	S
Adaptive Cruise Control with Forward Collision Alert <sup>1</sup>	-	-	-	-	P	-	-	-	-	-	P	S
Adjustable Speed Limiter	S	-	S	S	S	S	-	S	-	S	S	S
Airbags – Driver and front passenger	S	S	S	S	S	S	S	S	S	S	S	S
Airbags – Front seat side	S	S	S	S	S	S	S	S	S	S	S	S
Airbags – Side curtain	S	S	S	S	S	S	S	S	S	S	S	S
Alarm with perimeter, interior motion and vehicle inclination sensors	S	S	S	S	S	S	S	S	S	S	S	S
Automatic High Beam Control <sup>1</sup>	-	-	-	-	-	-	-	-	-	-	-	S
Beltminder™ – Driver and front passenger	S <sup>1</sup>	S <sup>1</sup>	S	S	S	S	S	S	S	S	S	S
Cruise Control with steering wheel mounted buttons	S	S	S	S	S	S	S	S	S	S	S	S
Driver Impairment Monitor	-	-	-	-	P	-	-	-	-	-	P	S
Emergency Assistance <sup>2</sup>	S	S	S	S	S	S	S	S	S	S	S	S
Hill Descent Control <sup>1</sup>	S	S	S	S	S	S	S	S	S	S	S	S
Lane Departure Warning with Lane Keeping Aid <sup>3</sup>	-	-	-	-	P	-	-	-	-	-	P	S
eLocking Rear Differential	S	S	S	S	S	S	S	S	S	S	S	S
MyKey®	-	-	-	-	S	-	-	-	-	-	S	S
Park Sensors – Front	-	-	-	-	S	-	-	-	-	-	S	S
Park Sensors – Rear	-	-	-	S	S	-	S	-	S	S	S	S
Rear View Camera	-	-	-	S	S	-	S	-	S	S	S	S
Remote keyless entry – 1 Fob	S	S	S	S	-	S	S	S	-	-	-	-
Remote keyless entry – 2 Fob	-	-	-	-	S	-	-	-	-	S	S	S
Tyre pressure monitoring system	-	-	-	-	S	-	-	-	-	-	S	S
Volumetric Alarm with Battery Backup system	S	S	S	S	S	S	S	S	S	S	S	S
Dynamic Stability Control (DSC) Incorporating ABS • Hill Launch Assist • Trailer Sway Control • Load Adaptive Control • Emergency Brake Assist • Roll Over Mitigation Emergency brake light • Traction Control System												
<b>Comfort and Convenience</b>												
2 child seat upper anchorage points	-	-	S	S	S	S	S	S	S	S	S	S
2 front auxiliary 12V power outlets	S	S	S	S	S	S	S	S	S	S	S	S
230V inverter in rear console	-	-	S	S	S	S	-	S	-	S	S	S
Ambient Lighting	-	-	-	-	-	-	-	-	-	-	-	S
Auto on/off headlamps	S	S	S	S	S	S	S	S	S	S	S	S
Centre Console – single lid with 2 cupholders & coin storage	S	S	S	S	S	S	S	S	S	S	S	S
Climate Control Dual Zone	-	-	-	-	S	-	-	-	-	-	S	S
Climate Control Single Zone manual	S	S	S	S	-	S	S	S	S	S	-	-
Cooled Console	-	-	-	-	S	-	-	-	-	-	S	S
Dual colour 4.2" instrumentation screens	-	-	-	-	S	-	-	-	-	-	S	S
Electrochromatic Rear View Mirror	-	-	-	-	S	-	-	-	-	-	S	S
Expanded wiring harness with 4-switch auxiliary bezel	-	S	-	-	-	-	S	-	-	-	-	-
Floor Coverings – Carpet	-	-	-	-	S	-	-	-	-	-	S	S
Floor Coverings – Vinyl	S	S	S	S	-	S	S	S	S	-	-	-
Floor Mats – Driver only	-	-	-	-	S	-	-	-	-	S	S	-
Floor Mats Wildtrak – All positions	-	-	-	-	-	-	-	-	-	-	-	S
Leather wrapped steering wheel & gear knob	-	-	-	-	S	-	-	-	-	-	S	S
Manual Day/Night Inside Rear View Mirror	S	S	S	S	-	S	S	S	S	S	-	-
Power Front Windows (Auto Driver)	S	S	S	S	S	S	S	S	S	S	S	S
Power Rear Windows	-	-	-	-	-	S	S	S	S	S	S	S
Rain Sensing Windscreen Wipers	-	-	-	-	S	-	-	-	-	-	S	S
Rear auxiliary 12V power outlet	-	-	S	S	S	S	-	S	-	S	S	S
Rear Window Defrost	-	-	-	-	S	S	S	S	S	S	S	S
Second battery	-	S	-	-	-	-	S	-	-	-	-	-
<b>Audio And Communication</b>												
3.5" Ice Blue Multi-Function Display	-	S	-	-	-	-	S	-	S	-	-	-
4.2" Colour Multi-Function Display	S	-	S	S	-	S	-	S	-	S	-	-
8" Colour Touch Screen	-	-	-	-	S	-	-	-	-	-	S	S
4 Speakers (2 Tweeters, 2 Woofers)	S	S	-	-	-	-	-	-	-	-	-	-
6 Speakers (2 Tweeters, 4 Woofers)	-	-	S	S	S	S	S	S	S	S	S	S
AM/FM Stereo Radio	S	S	S	S	S	S	S	S	S	S	S	S
USB/iPod integration <sup>4</sup>	S	S	S	S	S	S	S	S	S	S	S	S
Bluetooth® with Voice Control <sup>5</sup>	S	S	S	S	S	S	S	S	S	S	S	S
DAB Radio	-	-	-	-	S	-	-	-	-	-	S	S
Satellite Navigation with Traffic Management Channel <sup>6</sup>	-	-	-	-	S	-	-	-	-	-	S	S
Single CD Player (MP3 compatible)	S	S	S	S	S	S	S	S	S	S	S	S
SYNC® <sup>7</sup>	S	S	S	S	-	S	S	S	S	S	-	-
SYNC® 3 <sup>7</sup>	-	-	-	-	S	-	-	-	-	-	S	S
<b>Exterior</b>												
Body Mounted Indicators	-	-	-	-	S	-	-	-	-	-	S	S
Centre High Mounted Stop Light	-	-	-	S	-	-	-	S	S	-	-	-
Daytime running lamps	-	S	-	-	-	-	S	-	-	-	-	-
Door and Tailgate Handle – Black	S	S	S	S	-	S	S	S	S	S	-	-
Door Handle – Chrome	-	-	-	-	S	-	-	-	-	-	S	-
Exterior Mirrors – Black	S	S	S	S	-	S	S	S	S	-	-	-
Exterior Mirrors – Chrome	-	-	-	-	S	-	-	-	-	-	S	-
Exterior Mirrors – Monument Grey	-	-	-	-	-	-	-	-	-	-	S	-
Exterior Mirrors – London Grey	-	-	-	-	-	-	-	-	-	S	-	-
Exterior Mirrors: Power Adjustable, Power Folding, Heated, Turn Indicator	-	-	-	-	S	-	-	-	-	-	S	-
Exterior Mirrors: Power Adjustable, Power Folding, Heated, Turn Indicator, Puddle Lamps	-	-	-	-	-	-	-	-	-	-	-	S
Front Mud Flaps <sup>8</sup>	S	S	S	S	S	S	S	S	S	S	S	S
Rear Mud Flaps <sup>8</sup>	-	-	-	-	S	-	-	S	S	S	S	S
Front and Rear Bumper – Black	-	S	-	-	-	-	S	-	-	-	-	-
Front Bumper – Body Colour	S	-	S	S	S	S	-	S	-	S	S	S

1. Driver-assistance features are supplemental and do not replace the driver's judgement. Function may not operate in some driving and road conditions or adverse weather. May help avoid or minimise impact of a collision. 2. In the event of a crash which deploys an airbag or activates the fuel pump shut off, Emergency Assistance can use a mobile phone to dial emergency services. 3. Driver-assistance features are supplemental and do not replace the driver's judgement. Function may not operate in some driving and road conditions or adverse weather. Uses sensors. Operates at speeds over 64km/h on multi-lane roads with clearly visible lane markings. 4. iPod is a registered trademark of Apple Inc. and is used under licence. Connection cables sold separately. 5. Bluetooth® is a registered trademark of Bluetooth SIG Inc. and is used under licence. Customers should consult their Ford Dealer on the ability of their mobile phone handset to integrate with the Bluetooth® system prior to making a purchase decision. 6. Traffic information is provided through an arrangement with Intelematics Australia Pty Ltd. Traffic information is based on data provided with the permission of one or more third parties. Should Ford's arrangement with Intelematics Australia Pty Ltd cease for any reason, the ongoing provision of traffic information cannot be guaranteed. 7. For SYNC® compatibility, visit the [www.ford.com.au/sync](http://www.ford.com.au/sync). 8. Rear mud flaps on pick-up models only. 9. Rear bumper body

## 4x4 Specifications and Options

Model	XL Single C/C 3.2D	XL Plus Single C/C 3.2D	XL Super C/C 3.2D	XL Super P/U 3.2D	XLT Super P/U 3.2D	XL Double C/C 2.2D/3.2D	XL Plus Double C/C 3.2D	XL Double P/U 2.2D/3.2D	XL Plus Double P/U 3.2D	XLS Double P/U 3.2D	XLT Double P/U 3.2D	Wildtrak Double P/U 3.2D
<b>Exterior</b> continued												
Front Fog Lamps	-	-	-	-	S	-	-	-	-	S	S	S
Grille – Black	S	S	S	S	-	S	S	S	-	-	-	-
Grille – Chrome	-	-	-	-	S	-	-	-	-	-	S	-
Grille – London Grey	-	-	-	-	-	-	-	-	-	S	-	-
Grille, Door Handle, Front Bumper Insert and Rear Bumper <sup>9</sup> – Monument Grey	-	-	-	-	-	-	-	-	-	-	-	S
Plastic Side Steps	-	-	-	-	-	-	S	-	S	-	-	-
Plastic Side Steps with Bright Inserts	-	-	-	-	S	-	-	-	-	-	-	S
Plastic Side Steps with Brushed Inserts	-	-	-	-	-	-	-	-	-	-	-	S
Prestige paint <sup>10</sup>	O	O	O	O	O	O	O	O	O	O	O	O
Privacy Glass	-	-	-	-	S	-	-	-	-	-	S	S
Projector headlamps	-	-	-	-	S	-	-	-	-	-	S	S
Rear Bumper – Body Colour <sup>9</sup>	-	-	-	-	S	-	-	-	S	-	-	-
Rear Bumper – Chrome Steel <sup>9</sup>	-	-	-	-	S	-	-	-	-	-	S	-
Sports Bar Chrome Tubular	-	-	-	-	S	-	-	-	-	-	-	S
Sports Bar Wildtrak	-	-	-	-	-	-	-	-	-	-	-	S
Tailgate Handle – Chrome	-	-	-	-	S	-	-	-	-	-	-	S
Tailgate Handle – Monument Grey	-	-	-	-	-	-	-	-	-	-	-	S
Tailgate lock manual	-	-	-	-	S	-	-	-	S	S	S	S
Tow Bar	-	S	-	-	S	-	S	-	S	-	S	S
<b>Seating</b>												
6-way manual driver seat adjustment with lumbar support	S	S	S	S	S	S	S	S	S	S	S	-
8-way power driver seat adjustment with lumbar support	-	-	-	-	-	-	-	-	-	-	-	S
Front Bucket Seats	S	S	S	S	S	S	S	S	S	S	S	S
Heated front seats	-	-	-	-	-	-	-	-	-	-	-	S
Heavy duty canvas seat covers	-	S	-	-	-	-	S	-	S	-	-	-
Leather accented seats	-	-	-	-	-	-	-	-	-	-	-	S
<b>Factory Fitted Options</b>												
Automatic Transmission	O	S	O	-	O	O	S	O	S	O	O	O
Steel Bull Bar	-	O	-	-	-	-	O	-	O	-	-	-
XLT Tech Pack (Inc. Adaptive Cruise Control with Forward Collision Alert, Driver Impairment Monitor, Automatic High Beam Control, Lane Keeping Aid & Lane Departure Warning) <sup>1</sup>	-	-	-	-	O	-	-	-	-	-	O	-
<b>Vehicle Masses</b>												
Front Axle Load (Maximum) (kg)	1480	1480	1480	1480	1480	1480	1480	1480	1480	1480	1480	1480
Gross Combined Mass Inc. Braked trailer (kg)	6000	6000	6000	6000	6000	6000	6000	6000	6000	6000	6000	6000
GVM (kg)	3200	3200	3200	3200	3200	3200	3200	3200	3200	3200	3200	3200
Kerb Weight (kg) <sup>11</sup>	1858	1949	1928	2036	2151	1931/1982	2086	2057/2108	2210	2111	2202	2250
Payload (kg) <sup>12</sup>	1340	1250	1270	1160	1045	1265/1215	1110	1140/1090	990	1085	995	950
Rear Axle Load (Maximum) (kg)	1850	1850	1850	1850	1850	1850	1850	1850	1850	1850	1850	1850
<b>Exterior Body and Box Elements</b>												
Bedliner with 12V socket	-	-	-	-	S	-	-	-	-	-	S	S
Inner Tie Downs	-	-	-	-	S	S	-	-	S	S	S	S
Load Box Illumination	-	-	-	-	S	S	-	-	S	-	S	S
Load Rest	-	-	-	-	S	-	-	-	S	S	-	-
Outer Tie Downs	-	-	-	-	S	-	-	-	S	S	S	-
Roller shutter	-	-	-	-	-	-	-	-	-	-	-	S
<b>Pick-up Box Dimensions (mm)</b>												
Length – at floor	-	-	-	1847	1847	-	-	1549	1549	1549	1549	1549
Length – top of box	-	-	-	1783	1783	-	-	14				