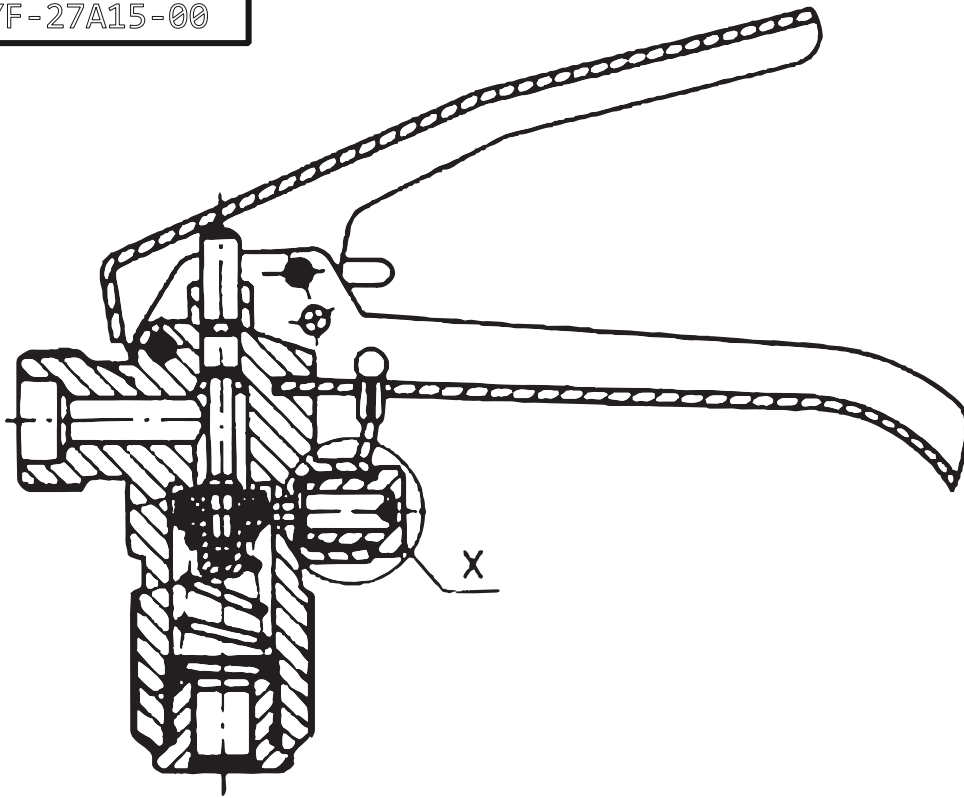
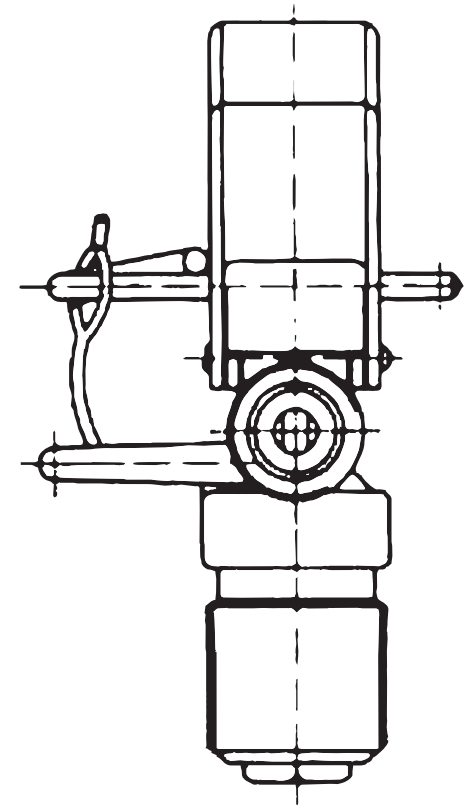


CYF-27A15-00



$\frac{X}{2:1}$



12.	03080-07	Burst Device Washer	1	Copper TP1
11.	CYF-27A-11	Burst Disc	1	1Cr18Ni9Ti
10.	CYF-27A-09A	Burst Device Cap	1	CuZn40Pb2
9.	CYF-16D-08-1	Rubber Link	1	Rubber
8.	310488-08-2B	Safety Pin	1	SUS304
7.	CYF-27A-08	Rivet	1	SUS304
6.	30718A-05	Lever	1	SUS304
5.	30718A-06	Handle	1	SUS304
4.	CYF-27F-04	Diptube Holder	1	CuZn40Pb2
3.	CYF-27-03	Spring	1	304H
2.	CYF-27A-02	Valve Stem Assembly	1	
1.	CYF-27A-01	Valve Body	1	CuZn40Pb2
No.	Part No.	Name	Qty	Material

Notes:

1. Valve body should be clean and without dirt, lever should be workable.
2. Space between stem and lever should be more than 1mm.
3. Valve should be tested in water with 100MPa air for 30s without any bubbles.
4. Pressure Test 31MPa for 60s, should be without leakage.
5. After assembly, there should be no damage on the surface.
6. Safety device work on 26 ± 2.5 MPa.
7. Valve to be stamped with

Weight with full charge without hose: XX.XXXKg

Weight empty without hose: XX.XXXKg

CO2 Valve
Assembly

CYF-27A15-00

UY-35410