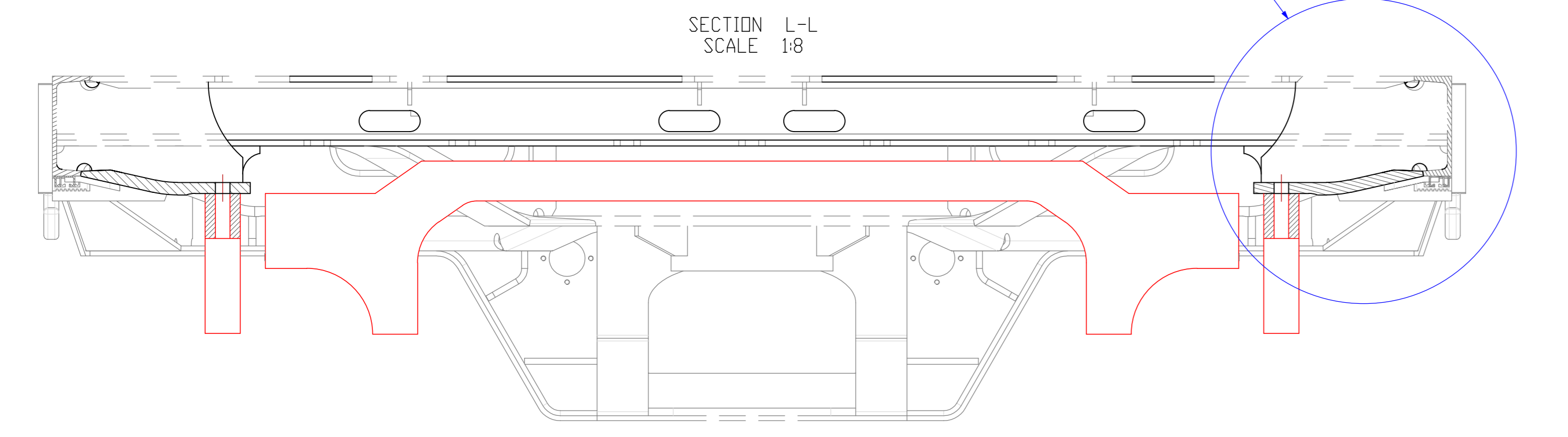
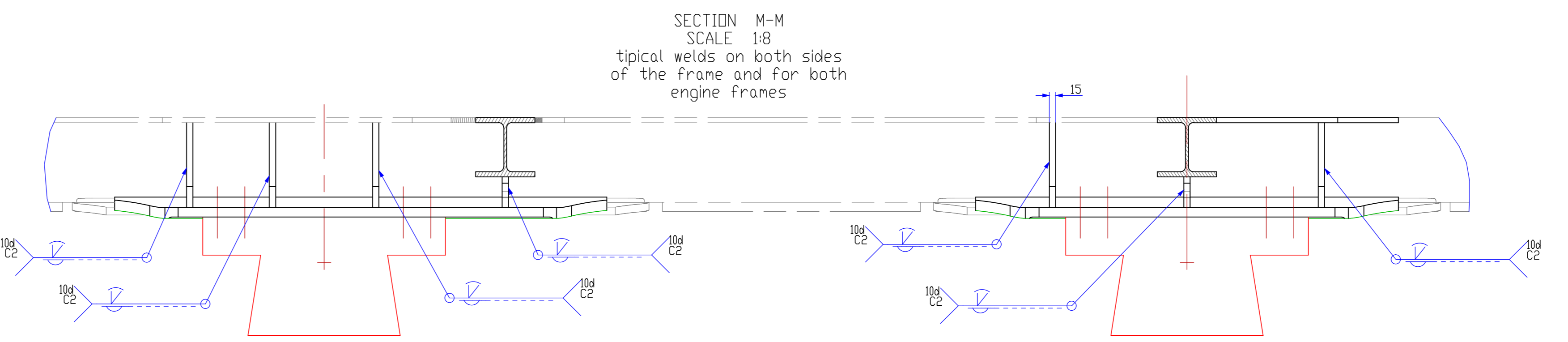
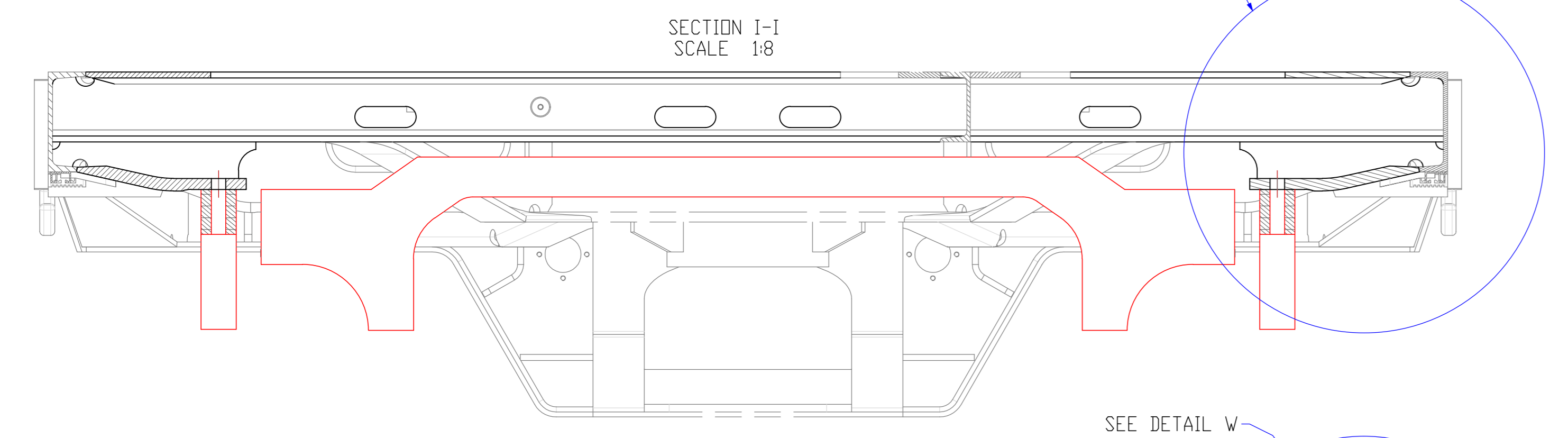
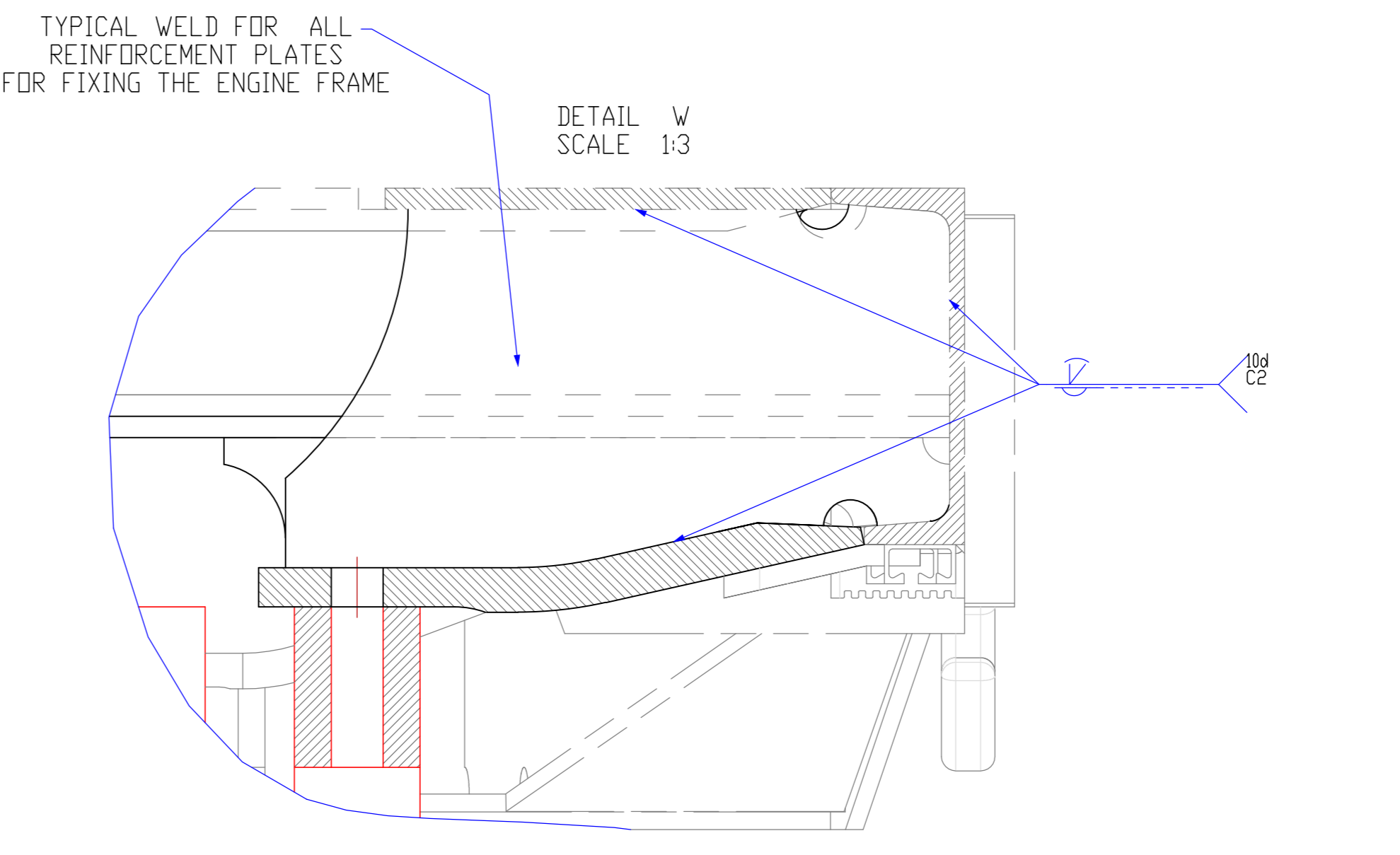
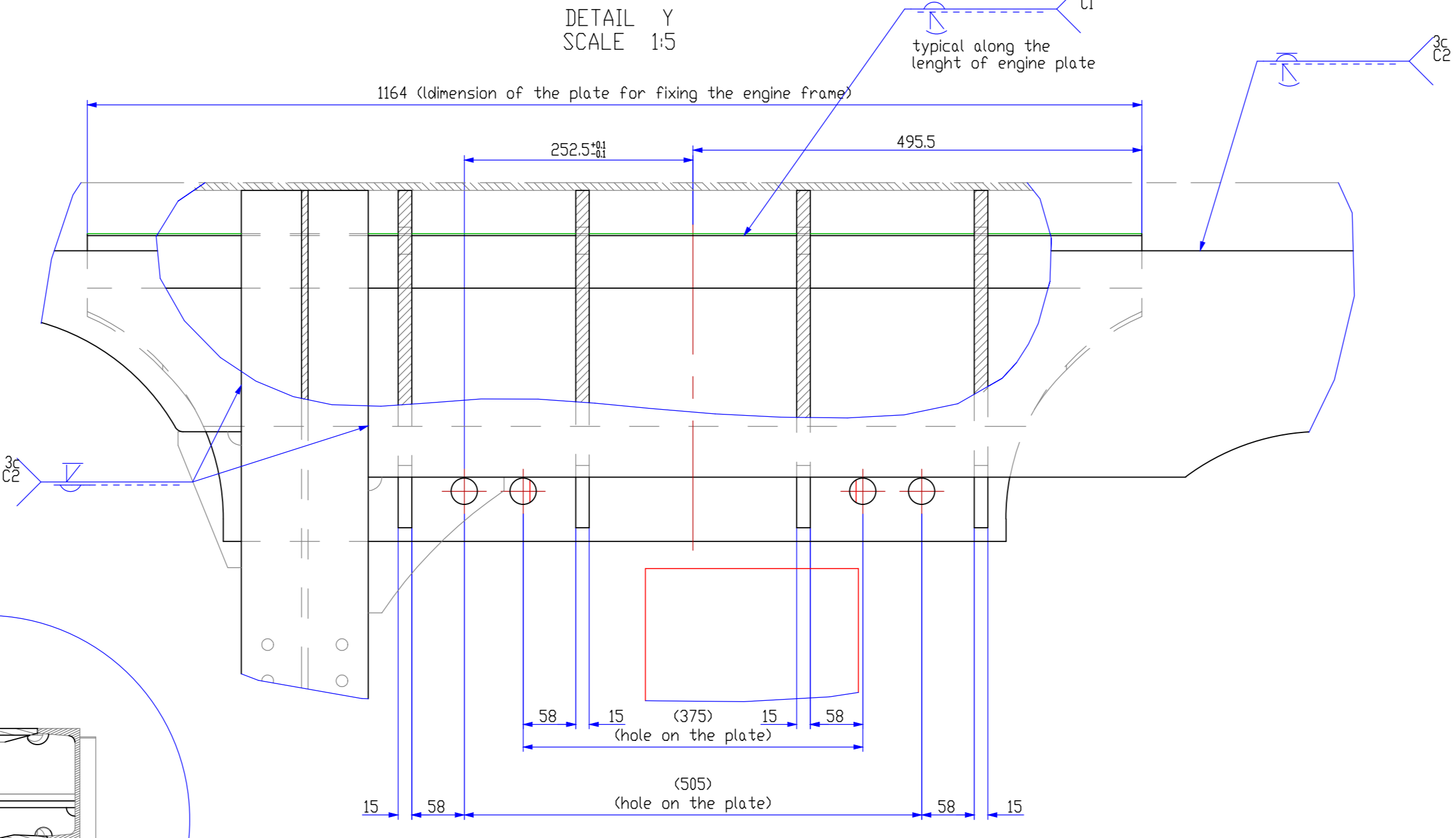
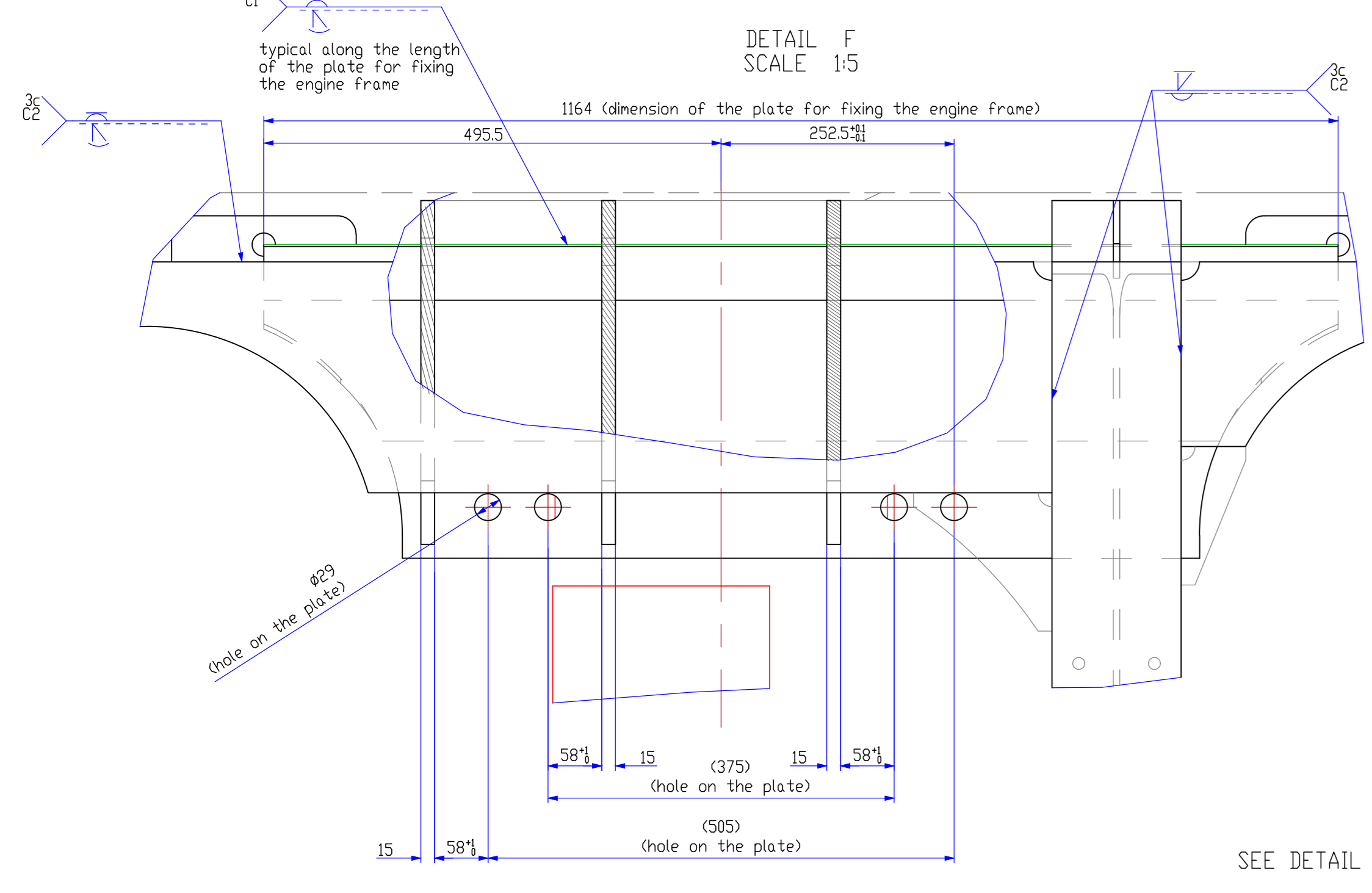
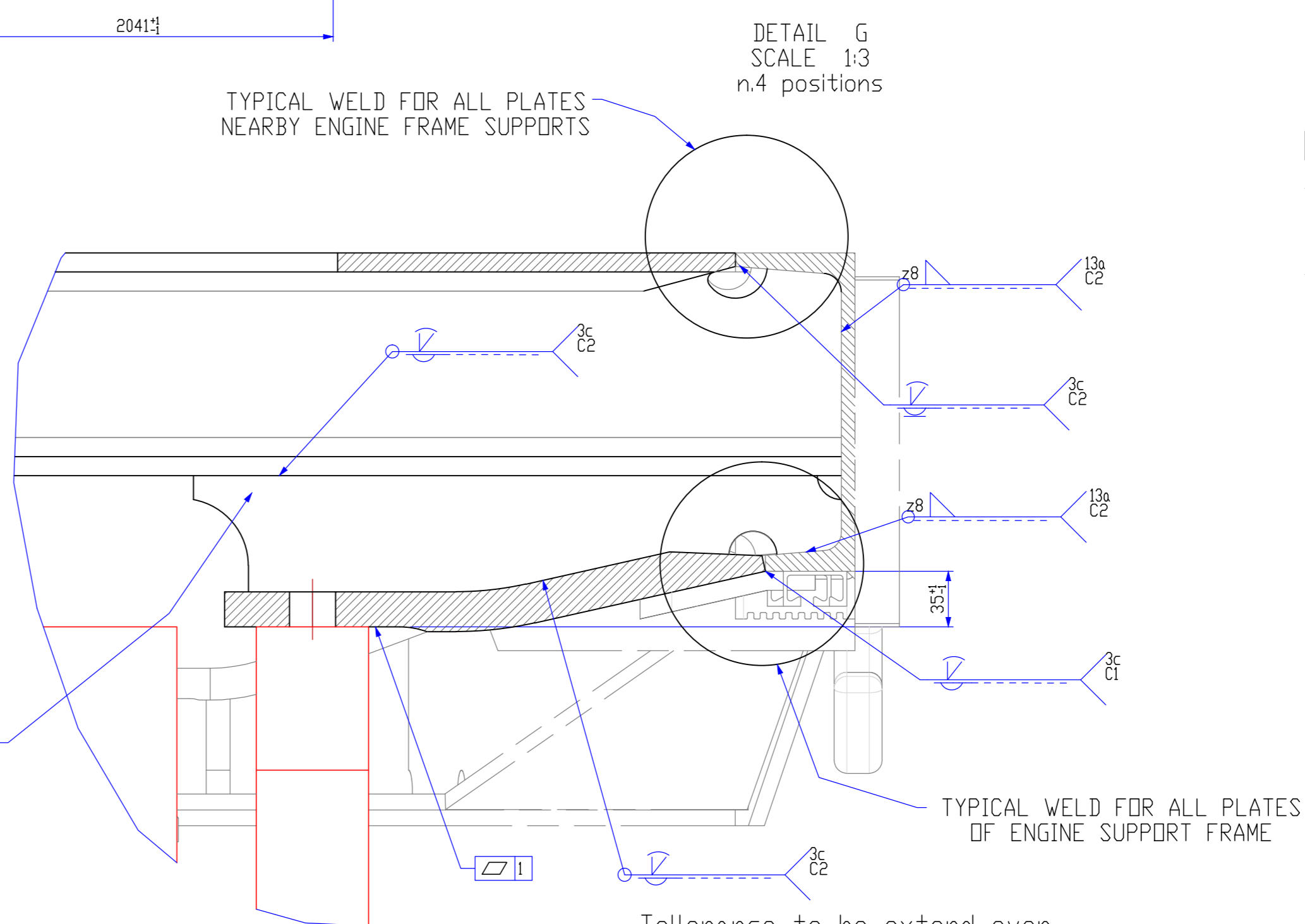
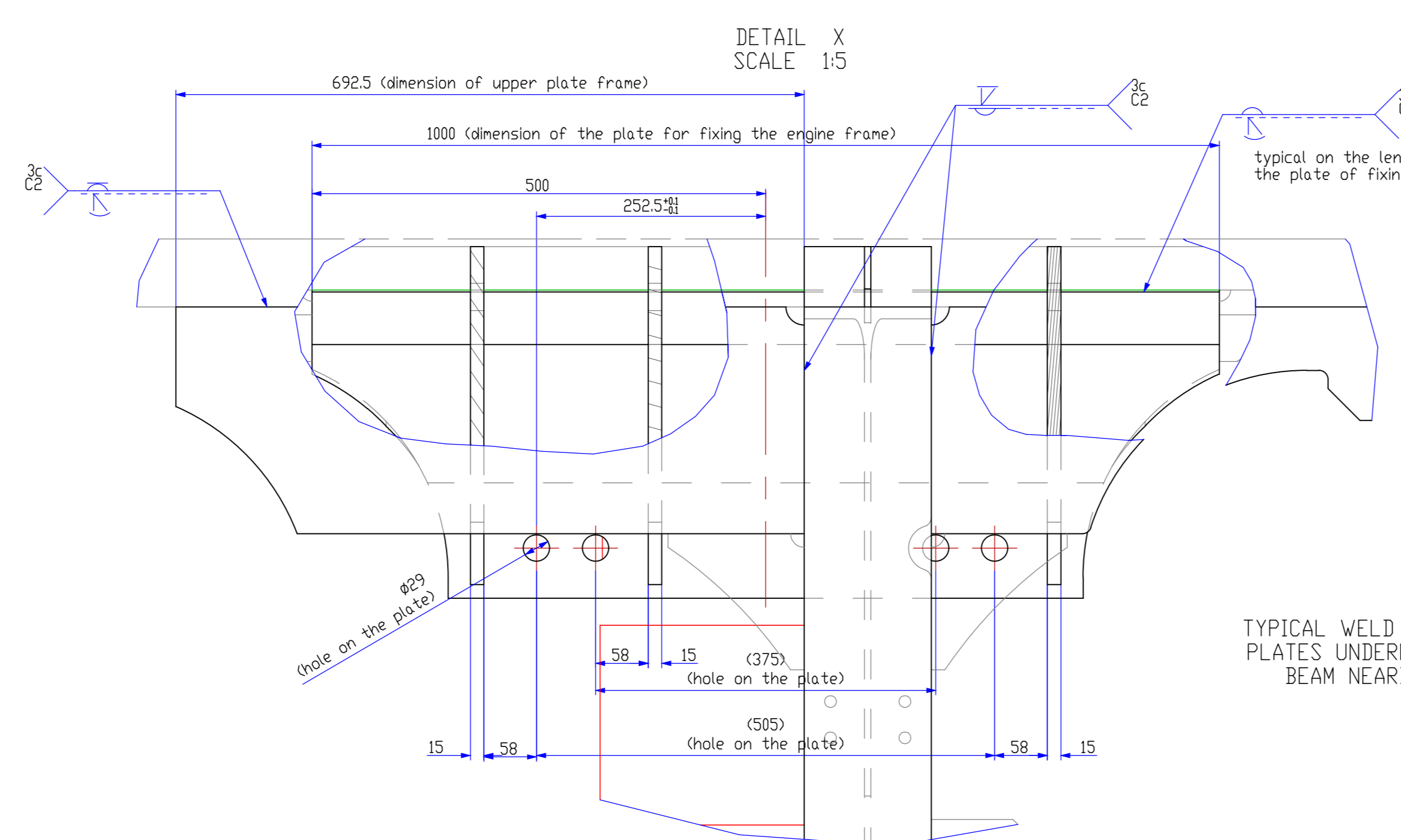
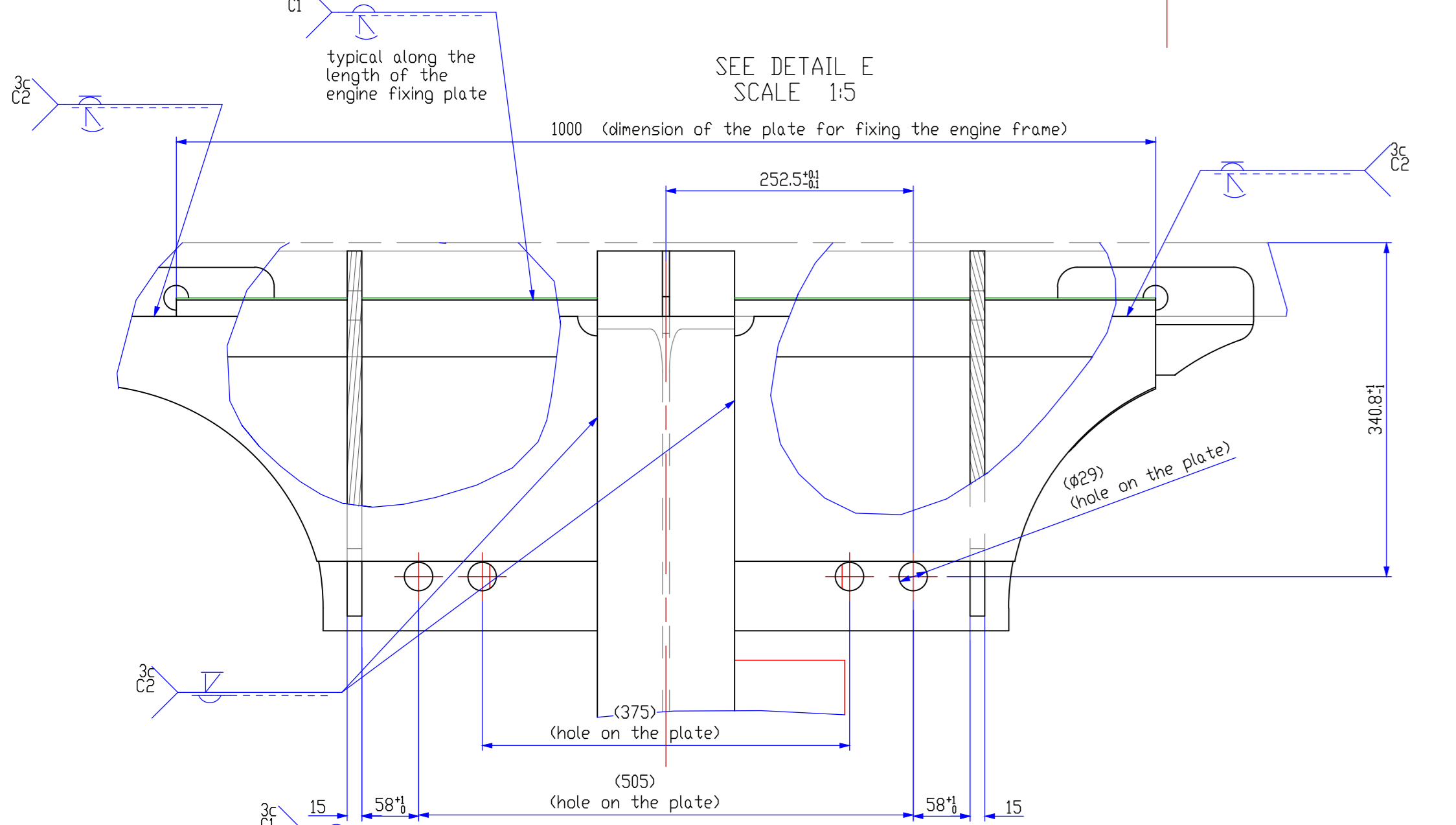
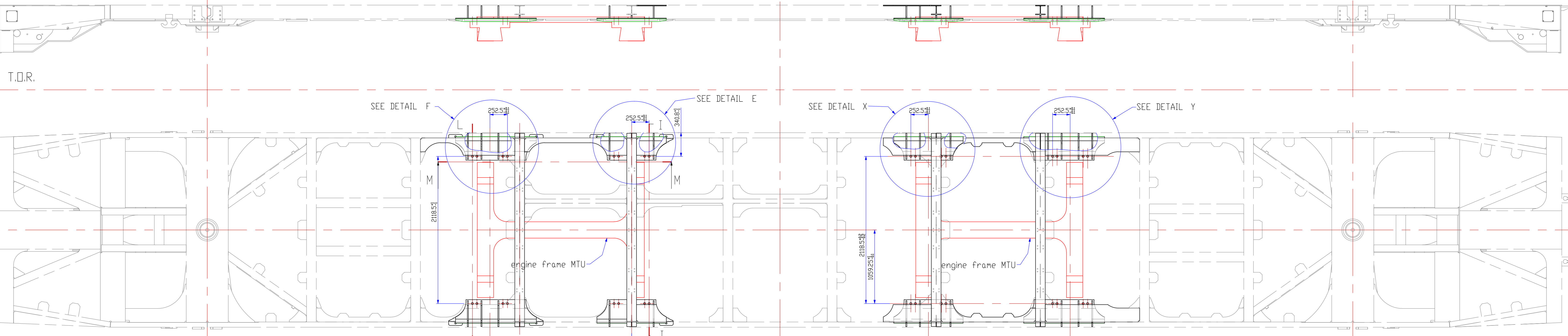


SIDE 1

SIDE 2



Note :
- All welds on the upper surface of the frame have to be grinded
- In this drawing reference is made only at the 6 central digits in the code

Code	Description	Material	Quantity	Weight
40	ZC30H028400	SUPPORTO ANTIVIBRANTE	2	13.3
39	ZC30H028300	SUPPORTO ANTIVIBRANTE	4	2.7
38	ZC30H028200	SUPPORTO ANTIVIBRANTE	4	2.4
37	ZC30H027700	LAMIERA PIANA	4	6.0
36	ZC30H027600	LAMIERA PIANA	4	5.9
35	ZC30H027500	LAMIERA PIANA	4	22.6
34	ZC30H027400	TRAVERSA HE UNI S357 - 140 B	4	46.6
33	ZC30H027300	SALA MACCHINE-UPN UN5680 - 140	1	28.3
32	ZC30H027200	SALA MACCHINE-UPN UN5680 - 140	1	20.5
31	ZC30H027100	SALA MACCHINE-UPN UN5680 - 140	1	24.1
30	ZC30H026900	IM-PIRE APFOGGIO MTU	2	59.6
29	ZC30H026400	IM-PIRE APFOGGIO MTU	2	59.6
28	ZC30H026300	IM-LAMIERA SUPERDIRE	1	14.5
27	ZC30H026100	NERVATURA	24	0.7
26	ZC30H026000	IM-NERVATURA	24	7.4
25	ZC30H025900	IM-LAMIERA SUPERDIRE	1	8.4
24	ZC30H025800	IM-LAMIERA SUPERDIRE	1	14.5
23	ZC30H025600	IM-LAMIERA SUPERDIRE	1	8.4
22	ZC30H025500	IM-LAMIERA PIANA	8	2.7
21	ZC30H025400	IM-PIRE APFOGGIO MTU	4	49.8
20	ZC30H025300	TRAVERSA HE UNI S357 - 140 B	1	50.3
19	ZC30H025200	TRAVERSA HE UNI S357 - 140 B	3	50.5
18	ZC30H025100	PIASTRA SILEVAMENTO	4	24.0
17	ZC30H025000	LAMIERA PIANA	4	3.6
16	ZC30H024900	LAMIERA PIANA	2	11.2
15	ZC30H024800	LAMIERA PIANA	2	9.6
14	ZC30H024700	LAMIERA PIANA	4	10.4
13	ZC30H024600	LAMIERA PIANA	2	11.2
12	ZC30H024500	LAMIERA PIANA	2	9.6
11	ZC30H024400	LAMIERA PIANA	2	11.2
10	ZC30H024300	PUNTIME UPN UN5680 - 300	2	35.4
9	ZC30H024200	LAMIERA PIANA	2	12.5
8	ZC30H024100	PUNTIME UPN UN5680 - 300	2	35.4
7	ZC30H022000	NERVATURA	12	0.4
6	ZC30H022100	TRAVERSA HE UNI S357 - 140 B	6	69.9
5	ZC30H022000	LONG. TESTATA UPN UN5680 - 200	2	39.1
4	ZC30H021900	LONG. TESTATA UPN UN5680 - 200	2	39.1
3	ZC30H021800	LONGITUDINALE UPN UN5680 - 200	1	477.4
2	ZC30H021700	LONGITUDINALE UPN UN5680 - 200	1	477.4
1	04845	VITE TORN. UN5680 40 M400	16	0.0

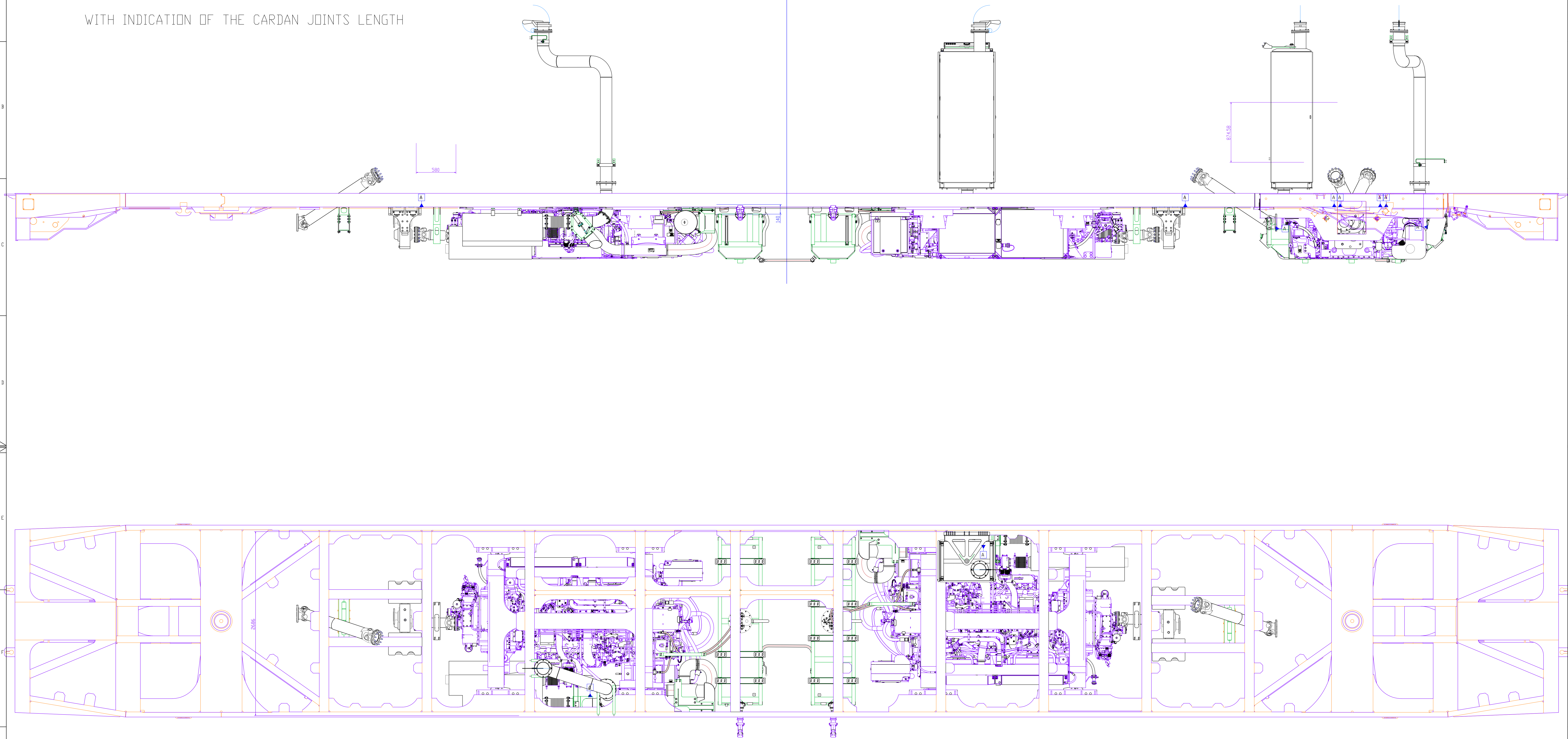
Design accepted for use by CALBERARD
 Design: CALBERARD
 Design check: RECCHA
 Design check: RECCHA
 Approved: VALENTINO

This drawing and the information contained therein have been created for a particular purpose and client. This is protected by copyright law. It is not to be reproduced or used in any form without the written permission of MTR Corporation New South Wales. If you do, you may incur legal liability or you may be prosecuted.

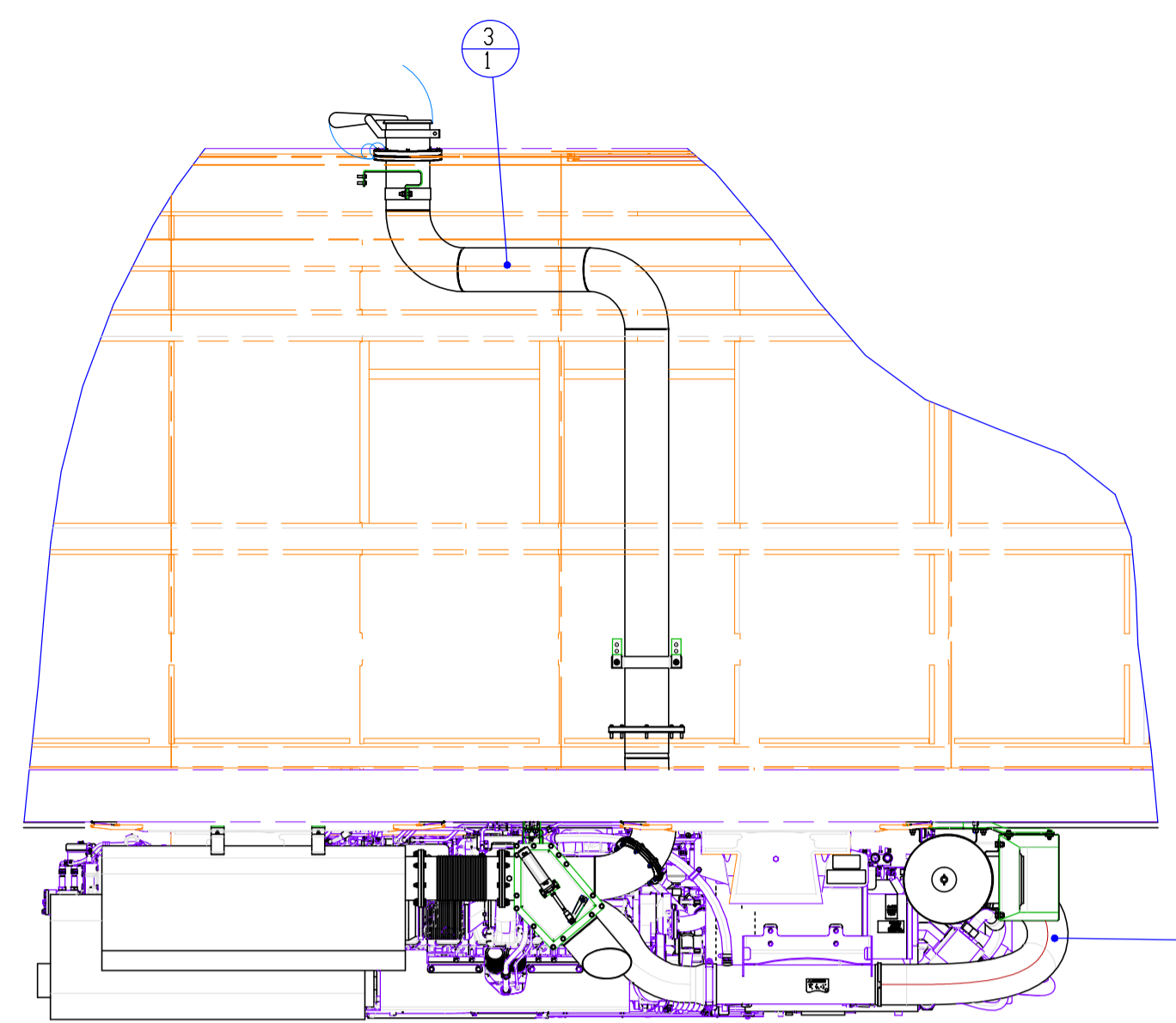
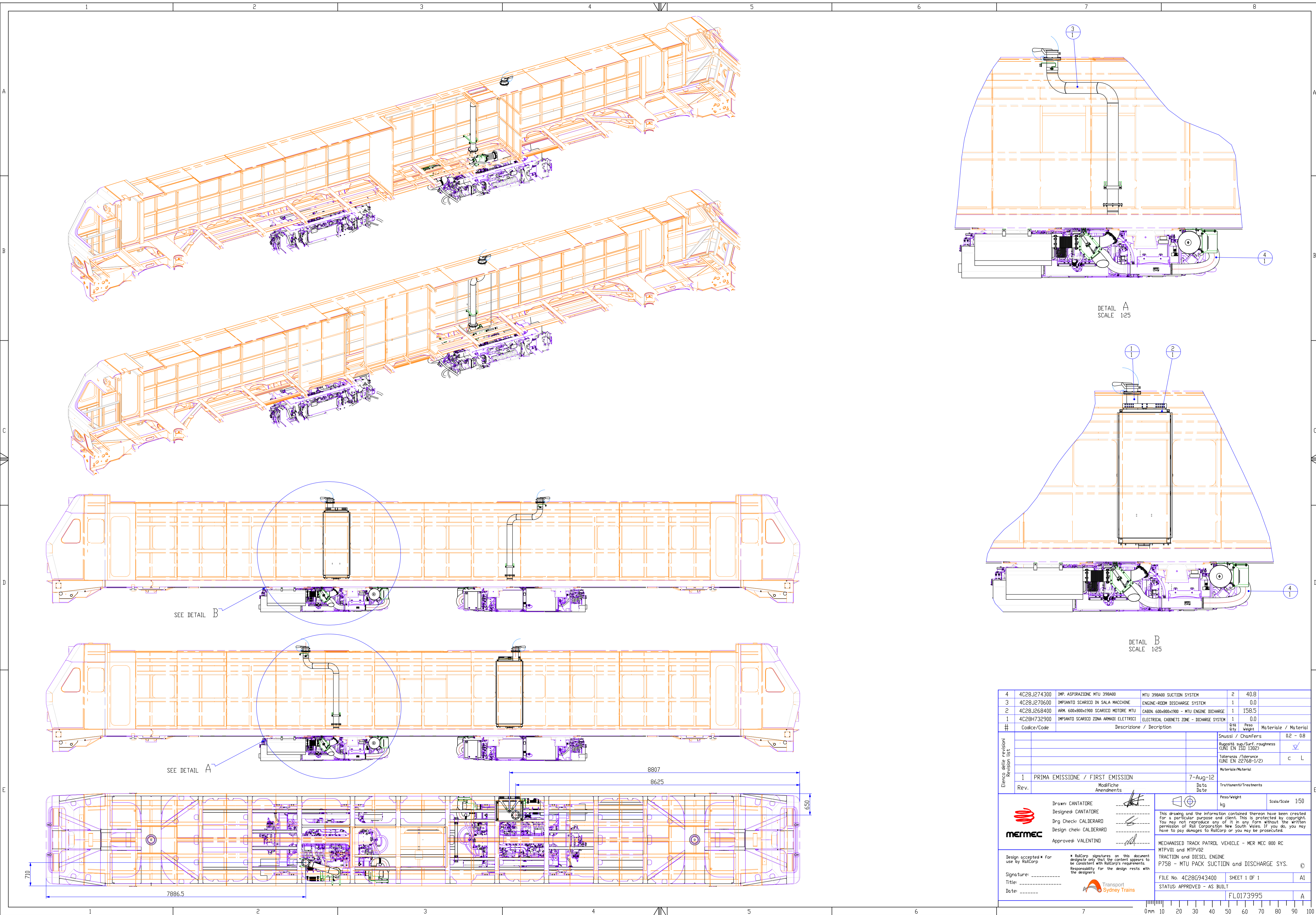
MACHINES TRACK PATROL VEHICLE - MER M2C 800 RC
 MTPV2 and MTPV2
 VEHICLE BODY
 FRAME CARPENTRY

FILE No: 30305028800 SHEET 2 OF 6
 STATUS: APPROVED - AS BUILT
 FL0173960

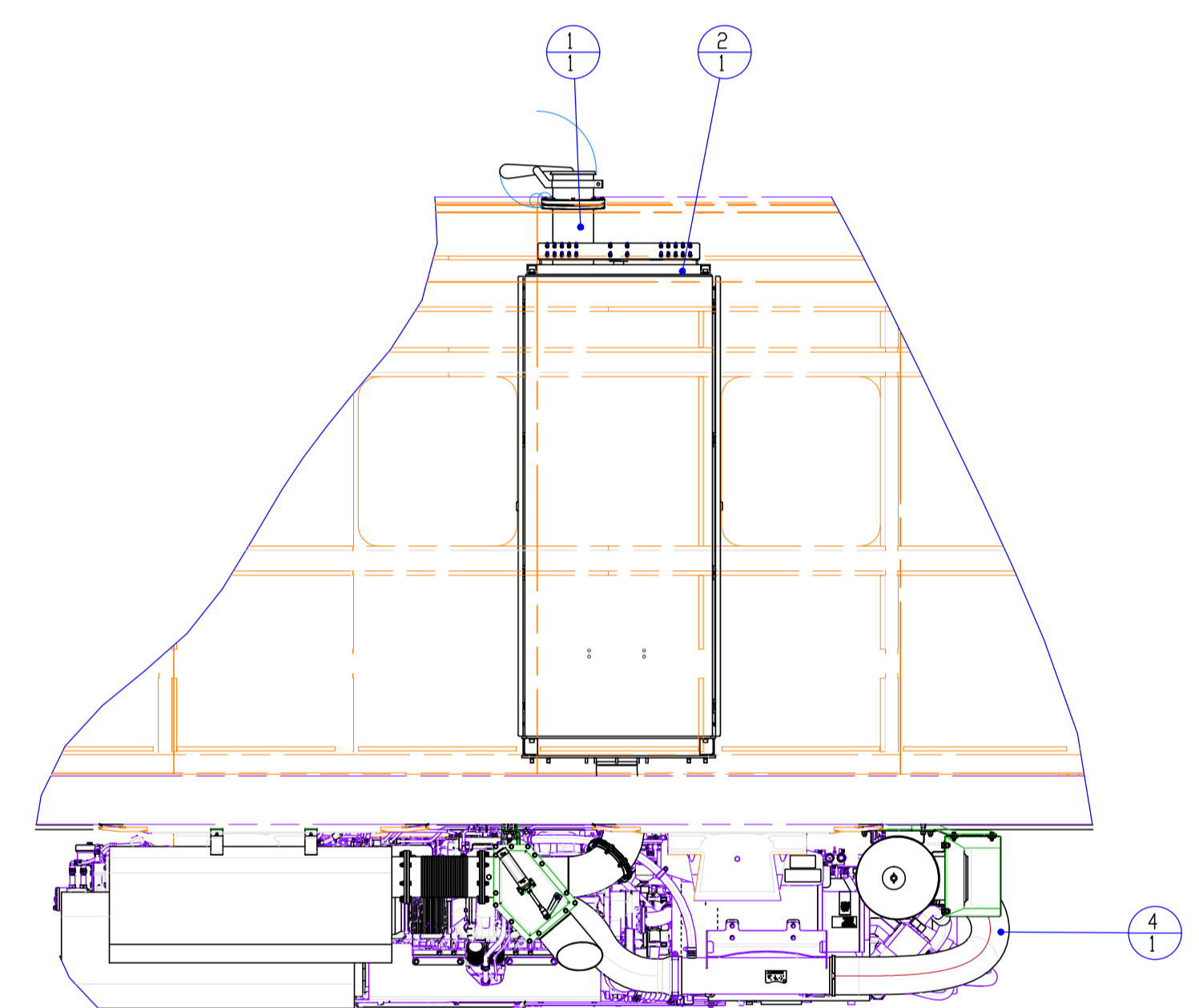
PROPULSION SYSTEM LAY-OUT
WITH INDICATION OF THE CARDAN JOINTS LENGTH



5	4C280479300	39800 - SERBATOI CARBURANTE	39800 - FUEL TANKS	1	449.3
4	4C280943600	ASSIEME CATENA CINEMATICA	KINEMATIC CHAIN ENSEMBLE	1	1033.9
3	4C280943500	IMPIANTO ALIMENTAZIONE GASOLIO	DIESEL SUPPLY SYSTEM	1	0.0
2	4C280943400	PPSB-IMPIANTO ASPIRAZIONE E SCARICO	PPSB- SUCTION AND DISCHARGE SYSTEM	1	0.0
1	1C28F707200	POWERPACK WFO	POWERPACK WFO	2	69.9
#	Codice/Code	Descrizione / Description	Spassi / Shafts	Materiali / Material	
			Spassi / Shafts	Materiali / Material	
			Spassi / Shafts	Materiali / Material	
			Spassi / Shafts	Materiali / Material	
1	PRIMA EMISSIONE / FIRST EMISSION		21-Nov-12		
Rev.	Modifiche / Amendments	Da / To	Scale	Trattamenti/Treatments	
	Disegnato / Drawn: FABIVANDI		Prova/Pesante / Weight	Scala/Scale	1:20
	Disegnato / Designed: FABIVANDI		kg		
	Disegnato / Design: VALENTINI				
	Disegnato / Design: VALENTINI				
	Approvato / Approved: RECCHIA				
<p>Design accepted for use by RailCorp</p> <p>* Before operation on the equipment, the user must be advised of the correct use and the correct use of the equipment in accordance with the manufacturer's instructions.</p> <p>Responsibility for the design rests with the designer.</p>			<p>This drawing and the information contained therein have been created for a particular purpose and client. This is protected by copyright law and it is prohibited to reproduce any part of it in any form without the written permission of Rail Corporation New South Wales. If you do, you may have to pay damages to RailCorp or you may be prosecuted.</p>		
<p>Design accepted for use by RailCorp</p> <p>* Before operation on the equipment, the user must be advised of the correct use and the correct use of the equipment in accordance with the manufacturer's instructions.</p> <p>Responsibility for the design rests with the designer.</p>			<p>Mechanised Track Patrol Vehicle - MTRPV2 and MTRPV2 TRACTION and DIESEL ENGINE PROPULSION AND TRACTION SYSTEM</p>		
<p>FILE No: 4C280943300 SHEET 1 OF 1</p>			<p>STATUS: APPROVED - AS BUILT</p>		
<p>Date:</p>			<p>FL0179994</p>		

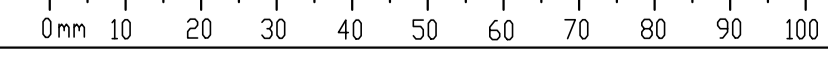


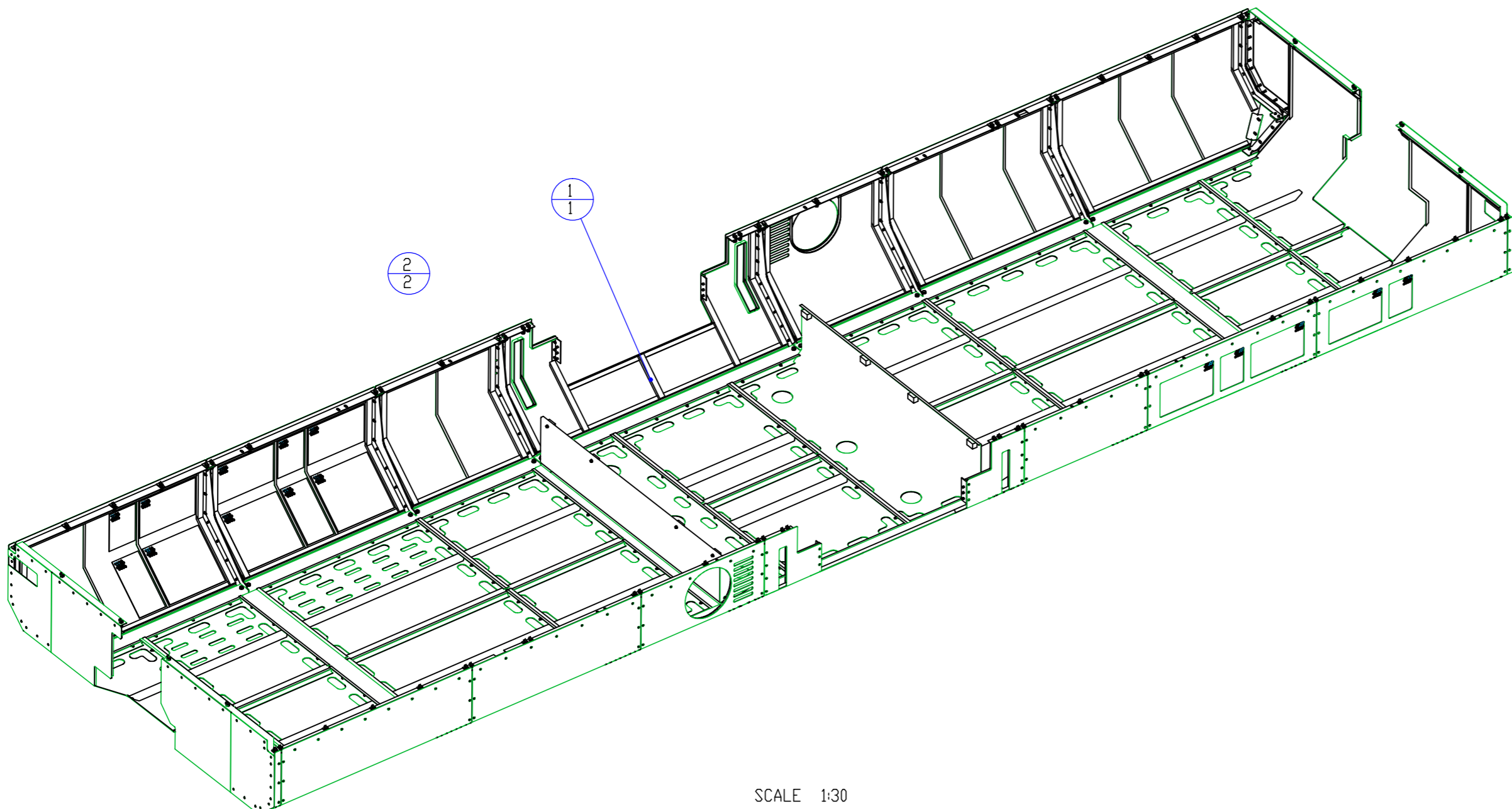
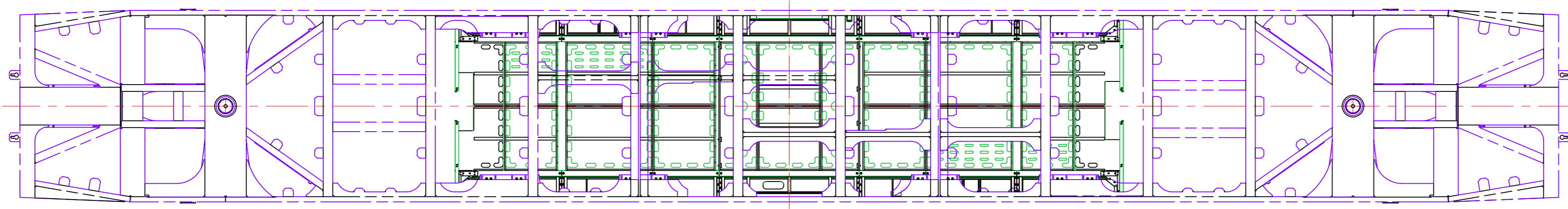
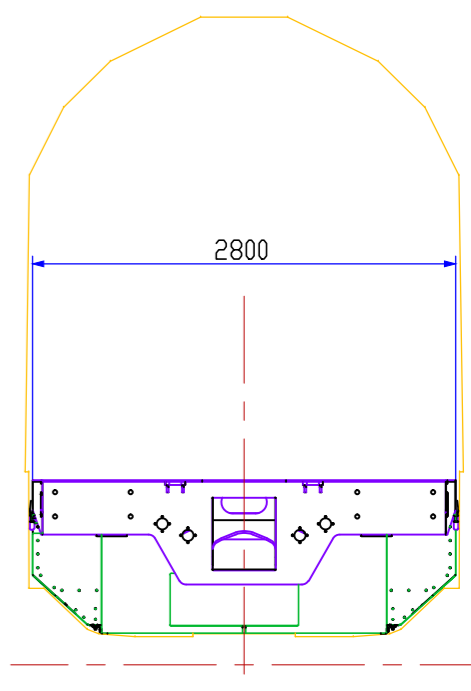
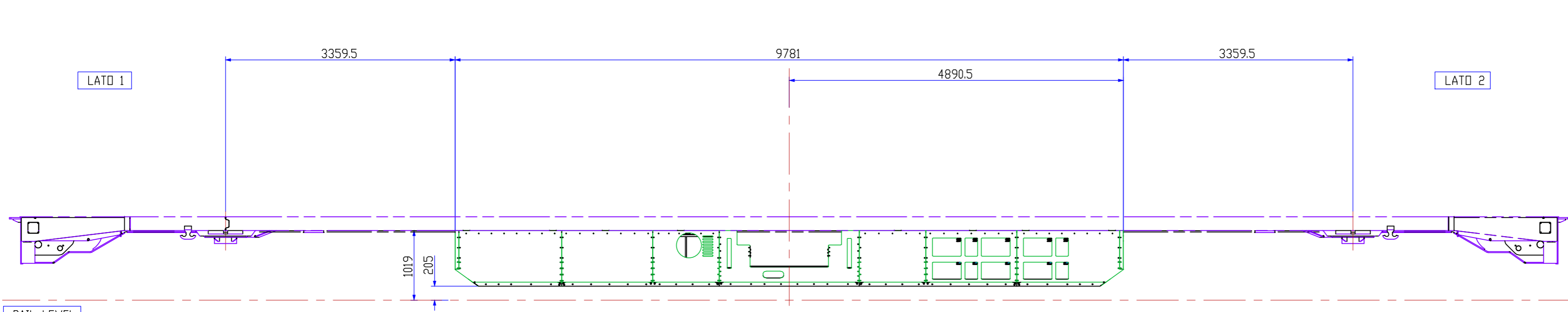
DETAIL A
SCALE 1:25



DETAIL B
SCALE 1:25

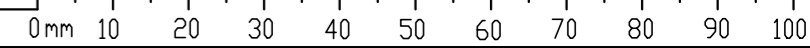
4	4C28J274300	IMP. ASPIRAZIONE MTU 398400	MTU 398400 SUCTION SYSTEM	2	40.8		
3	4C28J270600	IMPIANTO SCARICO IN SALA MACCHINE	ENGINE-ROOM DISCHARGE SYSTEM	1	0.0		
2	4C28J268400	ARM. 600x800x1900 SCARICO MOTORE MTU	CABIN 600x800x1900 - MTU ENGINE DISCHARGE	1	158.5		
1	4C28H732900	IMPIANTO SCARICO ZONA ARMADI ELETTRICI	ELECTRICAL CABINETS ZONE - DISCHARGE SYSTEM	1	0.0		
#	Code/Code	Descrizione / Description		Qty	Peso Weight	Materiale / Material	
						Snussi / Chanfers	02 - 08
						Rugosità superf. roughness (UNI EN ISO 1300)	✓
						Tolleranza /Tolerance (UNI EN 22768-1/2)	c L
						Materiale/Material	
1	PRIMA EMISSIONE / FIRST EMISSION			7-Aug-12			
Rev.		Modifiche / Amendments		Data / Date		Trattamenti/Treatments	
						Peso/Weight kg	Scale/Scale 1:50
		Drawn: CANTATORE Designed: CANTATORE Dwg Check: CALDERARO Design Check: CALDERARO Approved: VALENTINO				This drawing and the information contained therein have been created for a particular purpose and client. This is protected by copyright. You may not reproduce any of it in any form without the written permission of Rail Corporation New South Wales. If you do, you may have to pay damages to RailCorp or you may be prosecuted.	
Design accepted for use by RailCorp		* RailCorp signatures on this document designate only that the content appears to be consistent with RailCorp's requirements. Responsibility for the design rests with the designers.				MECHANISED TRACK PATROL VEHICLE - MER MEC 800 RC MTPV01 and MTPV02 TRACTION and DIESEL ENGINE P758 - MTU PACK SUCTION and DISCHARGE SYS.	
Signature: _____ Title: _____ Date: _____				FILE No. 4C28G943400 SHEET 1 OF 1 A1 STATUS: APPROVED - AS BUILT		FL0173995 A	

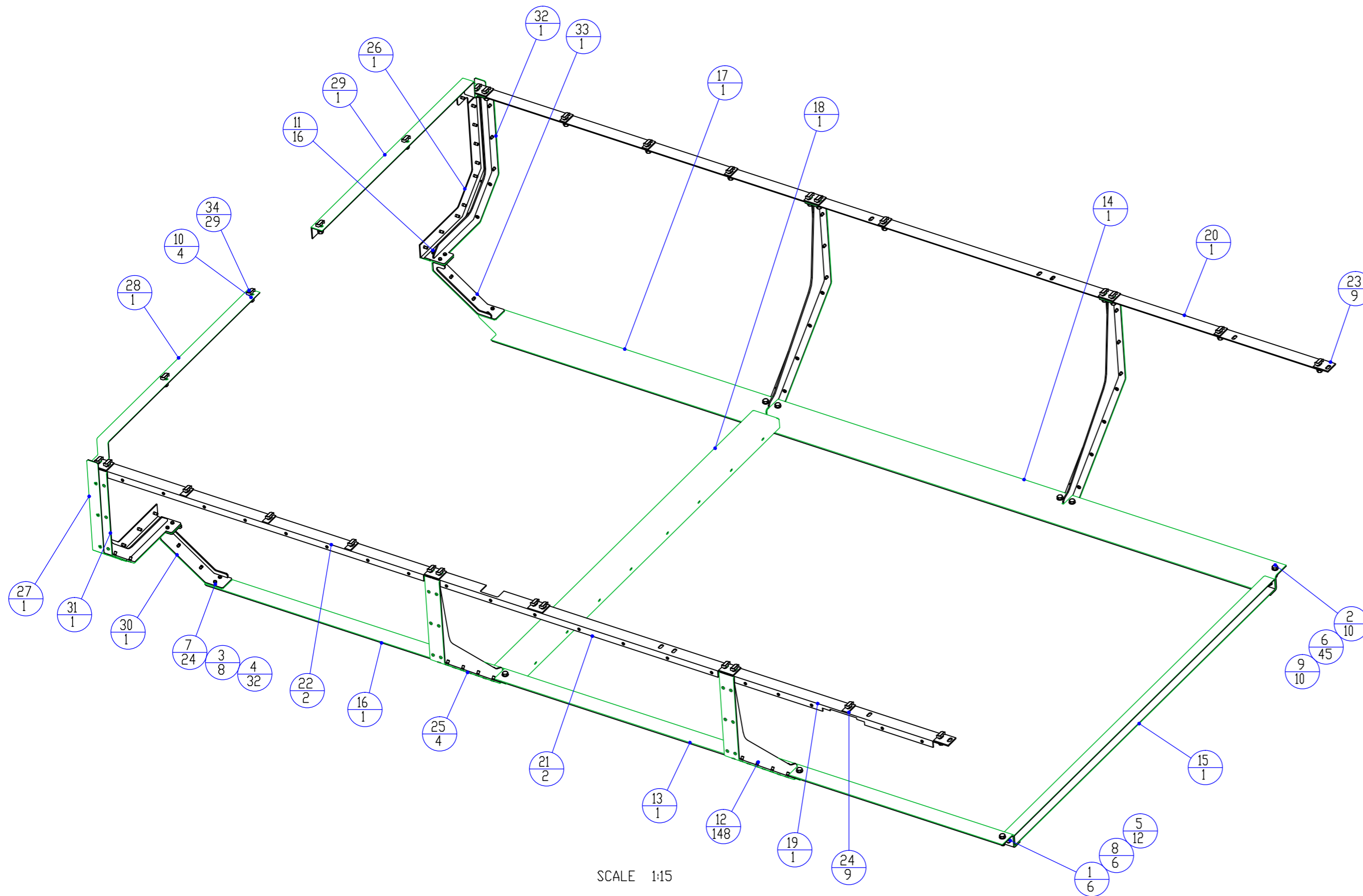
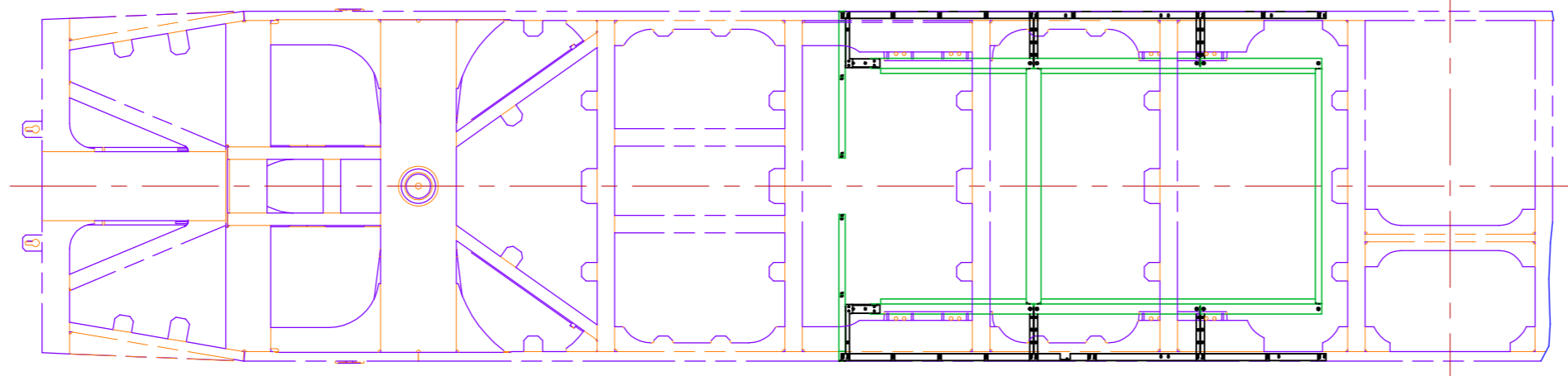
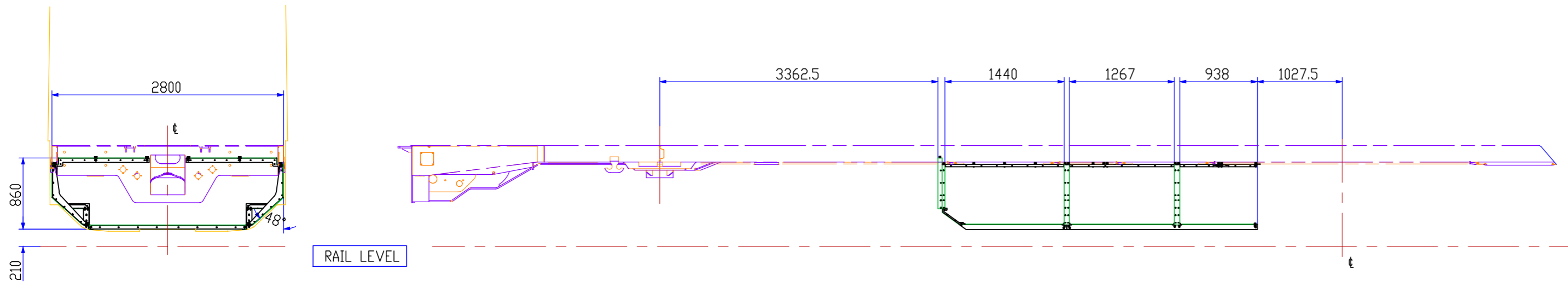




SCALE 1:30

2	4C28J363200	758 UNDER BODY HULL	P758 UNDER BODY HULL	2	275.8	
1	4C28H931500	CARTER SERBATOI P758	P758 TANKS SHELL	1	131.0	
#	Codice/Code	Descrizione / Description		Q.tà Qty	Peso Weight	Materiale / Material
						Smussi / Chamfers 0.2 - 0.8
						Rugosità sup./Surf. roughness (UNI EN ISO 1302) ✓
						Tolleranza /Tolerance (UNI EN 22768-1/2) c L
						Materiale/Material
1	PRIMA EMISSIONE / FIRST EMISSION		27-Sep-12			
Rev.	Modifiche Amendments		Data Date	Trattamenti/Treatments		
Drawn: FAVIA Designed: FAVIA Drg Check: CALDERARD Design chek: CALDERARD Approved: VALENTINO				Peso/Weight kg 682.6 Scala/Scale 1:50		This drawing and the information contained thereon have been created for a particular purpose and client. This is protected by copyright. You may not reproduce any of it in any form without the written permission of Rail Corporation New South Wales. If you do, you may have to pay damages to RailCorp or you may be prosecuted.
Design accepted * For use by RailCorp Signature: _____ Title: _____ Date: _____				* RailCorp signatures on this document designate only that the content appears to be consistent with RailCorp's requirements. Responsibility for the design rests with the designers.		
MECHANISED TRACK PATROL VEHICLE - MER MEC 800 RC MTPV01 and MTPV02 VEHICLE BODY - HULLS P758 UNDER BODY HULLS ENSEMBLE ©						
FILE No. 4C28H928100				SHEET 1 OF 1		A2
STATUS: APPROVED - AS BUILT						
FL0174065						A





SCALE 1:15

#	Codice/Code	Descrizione / Description	Q.tà Qty	Peso Weight	Materiale / Material	
34	A2380	VITE PER GUIDA HALFEN HS 40/22 M12X40	HALFEN T-HEAD BOLT HS 40/22	29	0,0	CLASS 8.8
33	3C05J410900	ASSIEME SALDATO	WELDED ASSEMBLY	1	1,3	
32	3C05J347000	ASSIEME SALDATO	WELDED ASSEMBLY	1	3,7	
31	3C05J346700	ASSIEME SALDATO	WELDED ASSEMBLY	1	3,7	
30	3C05J346400	ASSIEME SALDATO	WELDED ASSEMBLY	1	1,3	
29	3C05J314200	ASSIEME SALDATO	WELDED ASSEMBLY	1	2,8	
28	3C05J314100	ASSIEME SALDATO	WELDED ASSEMBLY	1	2,8	
27	3C05J314000	ASSIEME SALDATO	WELDED ASSEMBLY	1	2,1	
26	3C05J313900	ASSIEME SALDATO	WELDED ASSEMBLY	1	2,1	
25	3C05J312200	MONTEANTE	UPRIGHT	4	4,7	
24	2C30J411100	SPESSORE	SHIM (1 slot plate)	9	0,0	AL 6082 T6
23	2C30J363300	SPESSORE	SHIM (2 slots plate)	9	0,0	AL 6082 T6
22	2C30J312000	PROFILATO AD L	ANGLE BAR	2	2,8	S355 J0
21	2C30J311900	PROFILATO AD L	ANGLE BAR	2	4,0	S355 J0
20	2C30J311800	PROFILATO AD L	ANGLE BAR	1	1,8	S355 J0
19	2C30J311700	PROFILATO AD L	ANGLE BAR	1	1,7	S355 J0
18	2C30J311600	LAMIERA PRESSOPIEGATA	BENDED SHEET	1	8,9	S355 J0
17	2C30J311500	LAMIERA PRESSOPIEGATA	BENDED SHEET	1	8,6	S355 J0
16	2C30J311400	LAMIERA PRESSOPIEGATA	BENDED SHEET	1	8,6	S355 J0
15	2C30J311300	LAMIERA PRESSOPIEGATA	BENDED SHEET	1	6,2	S355 J0
14	2C30J311200	LAMIERA PRESSOPIEGATA	BENDED SHEET	1	15,6	S355 J0
13	2C30J311100	LAMIERA PRESSOPIEGATA	BENDED SHEET	1	15,6	S355 J0
12	1C38F753900	INSER. FIL.SV.ZIGR. M6x19 9202-Z LUNGO	DEFORM.THR.INSERT UNI9202-Z (long) M6x19	148	0,0	
11	26936	VITE TSPEI UNI5933 ZN M6X25	HEX.SDC. COUNT.H. SCREW UNI5933 ZN M6X25	16	0,0	
10	19013	ROSETTA UNI6593 R40 ZN M12 NORMALE	WIDE FLAT WASHER UNI6593 R40 ZN M12	4	0,0	CLASS R40
9	13132	DADO AUTOBLOCCANTE UNI7473 ZN M12	NYLON INS. HEX LOCK NUT UNI7473 ZN M12	10	0,0	CLASS 8G
8	13130	DADO AUTOBLOCCANTE UNI7473 ZN M8	NYLON INS. HEX LOCK NUT UNI7473 ZN M8	6	0,0	CLASS 8G
7	13129	DADO AUTOBLOCCANTE UNI7473 ZN M6	NYLON INS. HEX LOCK NUT UNI7473 ZN M6	24	0,0	CLASS 8G
6	12970	ROSETTA UNI6592 R40 ZN M12	FLAT WASHER UNI6592 R40 ZN M12	45	0,0	CLASS R40
5	12968	ROSETTA UNI6592 R40 ZN M8	FLAT WASHER UNI6592 R40 ZN M8	12	0,0	CLASS R40
4	12966	ROSETTA UNI6592 R40 ZN M6	FLAT WASHER UNI6592 R40 ZN M6	32	0,0	CLASS R40
3	10470	VITE TE UNI5739 ZN M6X25	HEXAGON HEAD SCREW UNI5739 ZN M6X25	8	0,0	CLASS 8.8
2	08611	VITE TE UNI5737 ZN M12X40	PART.THR. HEXHEAD SCREW UNI5737 ZN M12X40	10	0,1	
1	08578	VITE TE UNI5737 ZN M8X30	PART.THR. HEXHEAD SCREW UNI5737 ZN M8X30	6	0,1	

Rev.	Modifiche Amendments	Data Date	Trattamenti/Treatments
1	PRIMA EMISSIONE / FIRST EMISSION	26-Sep-12	

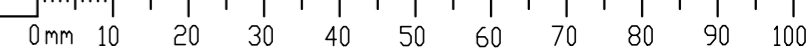
Smussi / Chamfers	0,2 - 0,8
Rugosità sup./Surf. roughness (UNI EN ISO 1302)	✓
Tolleranza /Tolerance (UNI EN 22768-1/2)	c L
Materiale/Material	

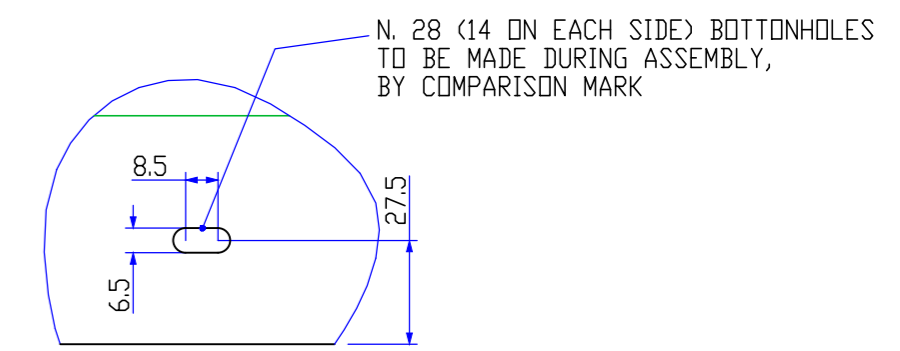
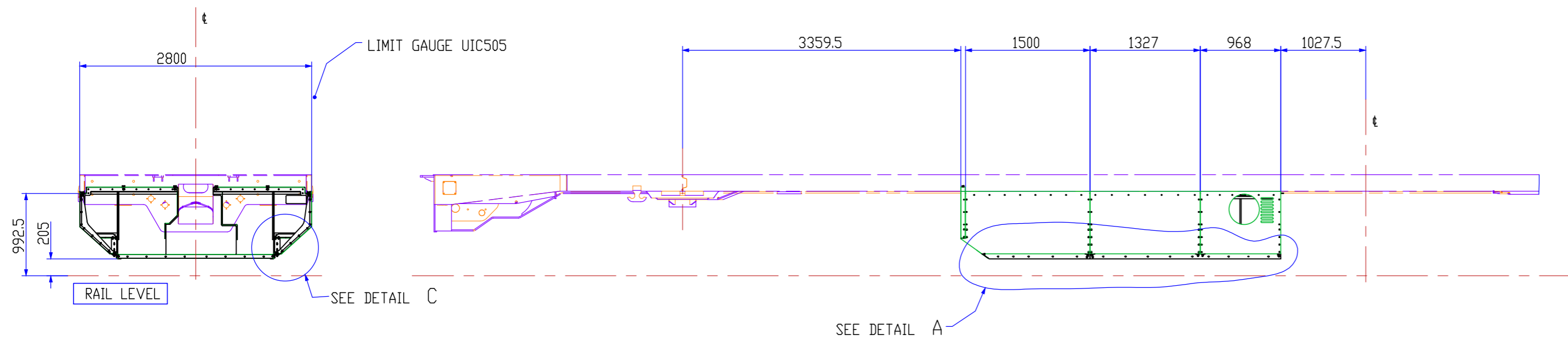
Drawn: FAVIA	Designed: FAVIA	Drg Check: CALDERARO	Approved: VALENTINO
--------------	-----------------	----------------------	---------------------

Design accepted * For use by RailCorp	* RailCorp signatures on this document designate only that the content appears to be consistent with RailCorp's requirements. Responsibility for the design rests with the designers.
---------------------------------------	---

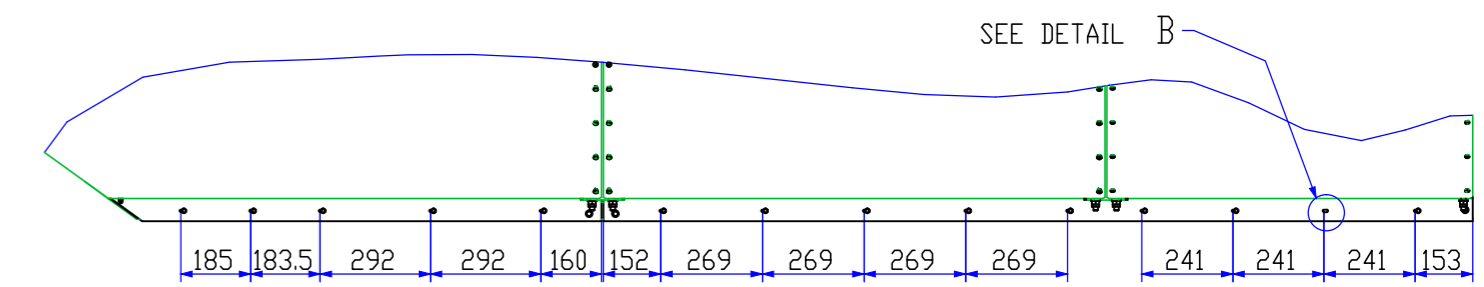
Signature: _____	Title: _____	Date: _____
------------------	--------------	-------------

FILE No. 4C28J312500	SHEET 1 OF 2	A2
STATUS: APPROVED - AS BUILT		
FL0174081		

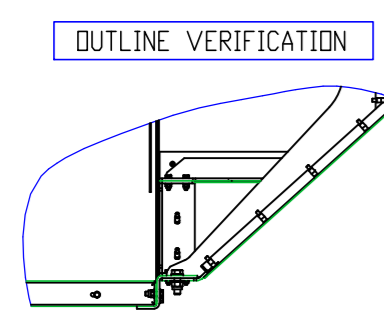




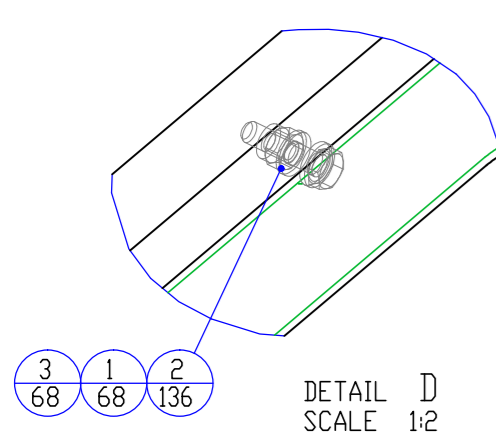
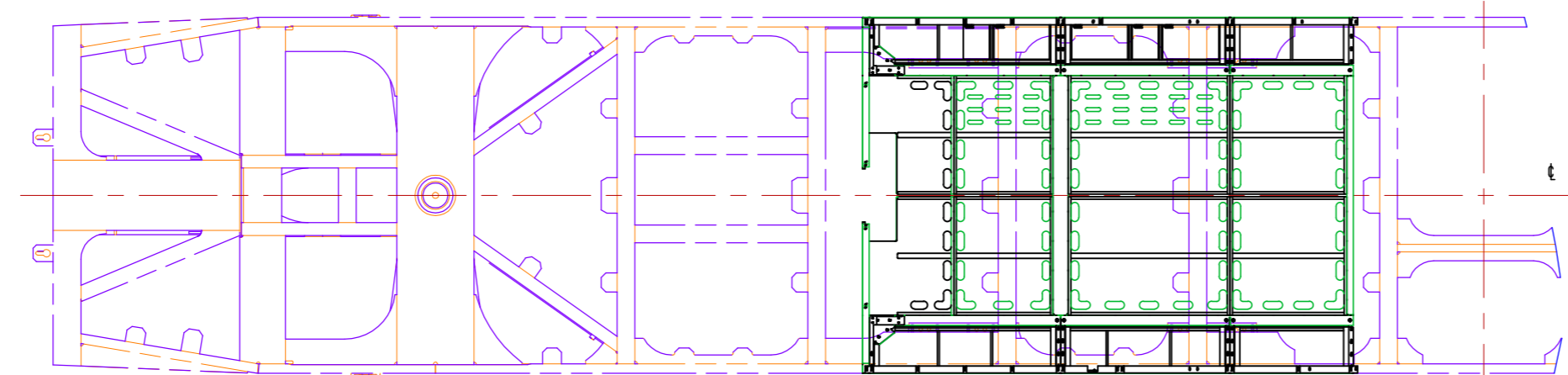
DETAIL B
SCALE 1:2



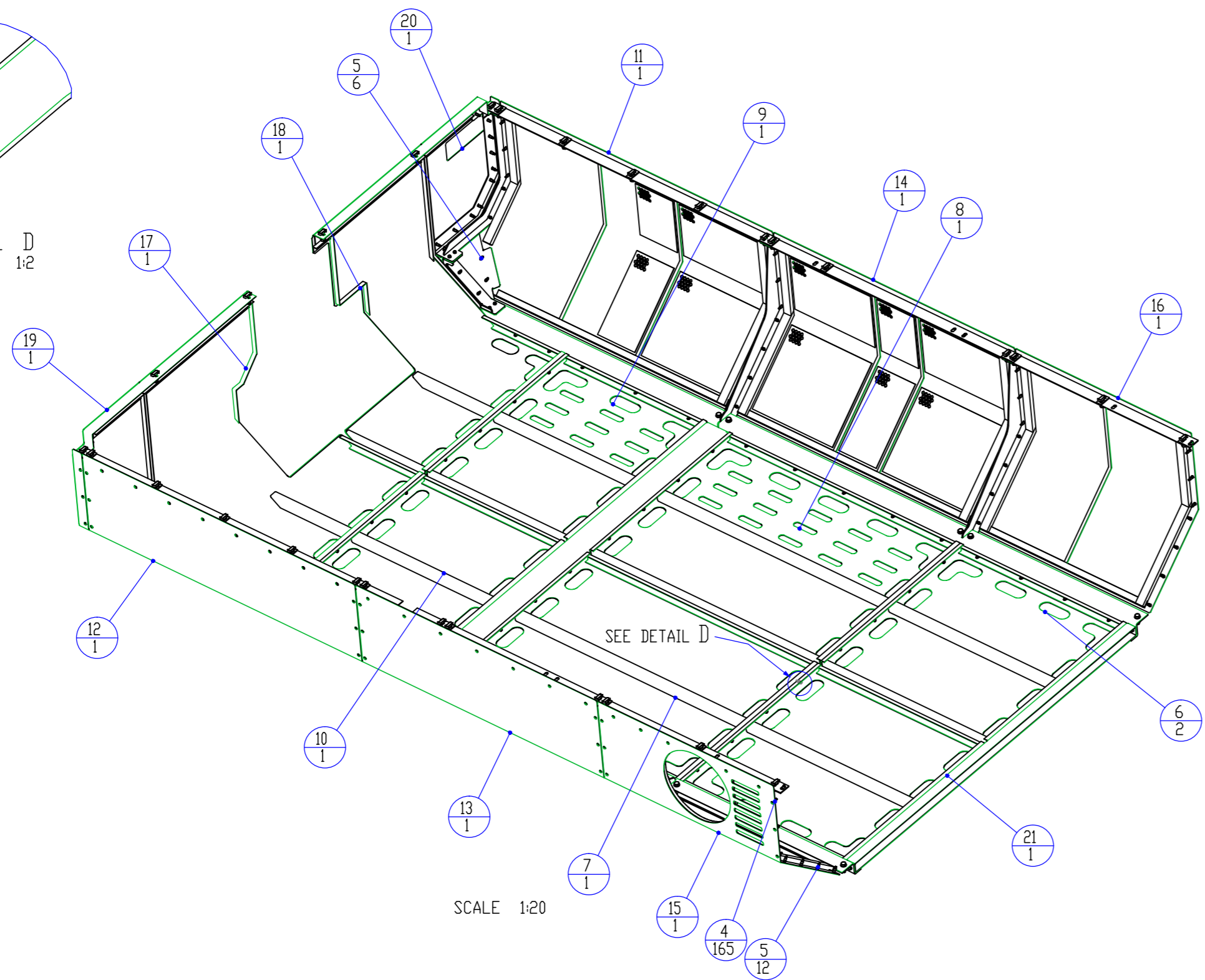
DETAIL A
SCALE 1:20



DETAIL C
SCALE 1:15



DETAIL D
SCALE 1:2



21	4C28J312500	TELAIO CARENE P758	P758 HULLS FRAME	1	106.3
20	3C05J314400	ASSIEME SALDATO	WELDED ASSEMBLY	1	2.7
19	3C05J314300	ASSIEME SALDATO	WELDED ASSEMBLY	1	2.9
18	3C05J313800	ASSIEME SALDATO	WELDED ASSEMBLY	1	9.3
17	3C05J313700	PROTEZIONE SERBATOIO	TANK SHIELD	1	10.0
16	3C05J313600	ASSIEME SALDATO	WELDED ASSEMBLY	1	9.1
15	3C05J313500	ASSIEME SALDATO	WELDED ASSEMBLY	1	7.9
14	3C05J313400	ASSIEME SALDATO	WELDED ASSEMBLY	1	12.7
13	3C05J313300	ASSIEME SALDATO	WELDED ASSEMBLY	1	12.2
12	3C05J313200	ASSIEME SALDATO	WELDED ASSEMBLY	1	13.4
11	3C05J313100	ASSIEME SALDATO	WELDED ASSEMBLY	1	13.8
10	3C05J313000	ASSIEME SALDATO	WELDED ASSEMBLY	1	7.7
9	3C05J312900	ASSIEME SALDATO	WELDED ASSEMBLY	1	7.4
8	3C05J312800	ASSIEME SALDATO	WELDED ASSEMBLY	1	11.9
7	3C05J312700	ASSIEME SALDATO	WELDED ASSEMBLY	1	12.3
6	3C05J312600	ASSIEME SALDATO	WELDED ASSEMBLY	2	9.0
5	1C38F753900	INSER. FIL.SV.ZIGR. M6x19 9202-Z LUNGO	DEFORM.THR.INSERT UNI9202-Z (long) M6x19	18	0.0
4	26937	VITE TSPEI UNI5933 ZN M6x30	HEX.SDC. CDUNT.H. SCREW UNI5933 ZN M6x30	165	0.0
3	13129	DADO AUTOBLOCCANTE UNI7473 ZN M6	NYLON INS. HEX LOCK NUT UNI7473 ZN M6	68	0.0 CLASS 8G
2	12966	ROSETTA UNI6592 R40 ZN M6	FLAT WASHER UNI6592 R40 ZN M6	136	0.0 CLASS R40
1	10470	VITE TE UNI5739 ZN M6x25	HEXAGON HEAD SCREW UNI5739 ZN M6x25	68	0.0 CLASS 8.8

#	Codice/Code	Descrizione / Description	Q'tà Qty	Peso Weight	Materiale / Material
					Smussi / Chamfers 0.2 - 0.8
					Rugosità sup./Surf. roughness (UNI EN ISO 1302) ✓
					Tolleranza /Tolerance (UNI EN 22768-1/2) c L
					Materiale/Material
1	PRIMA EMISSIONE / FIRST EMISSION			27-Sep-12	
Rev.	Modifiche Amendments			Data Date	Trattamenti/Treatments

Drawn: FAVIA
 Designed: FAVIA
 Drg Check: CALDERARD
 Design chek: CALDERARD
 Approved: VALENTINO

Design accepted * For use by RailCorp
 Signature: _____
 Title: _____
 Date: _____

* RailCorp signatures on this document designate only that the content appears to be consistent with RailCorp's requirements. Responsibility for the design rests with the designers.

Peso/Weight kg 275,8
 Scala/Scale 1:10

This drawing and the information contained therein have been created for a particular purpose and client. This is protected by copyright. You may not reproduce any of it in any form without the written permission of Rail Corporation New South Wales. If you do, you may have to pay damages to RailCorp or you may be prosecuted.

MECHANISED TRACK PATROL VEHICLE - MER MEC 800 RC
 MTPV01 and MTPV02
 VEHICLE BODY - HULLS
 P758 HULL - HOLES DETAIL

FILE No. 4C28J363200 SHEET 1 OF 2 A2
 STATUS: APPROVED - AS BUILT
 FL0174085 A

