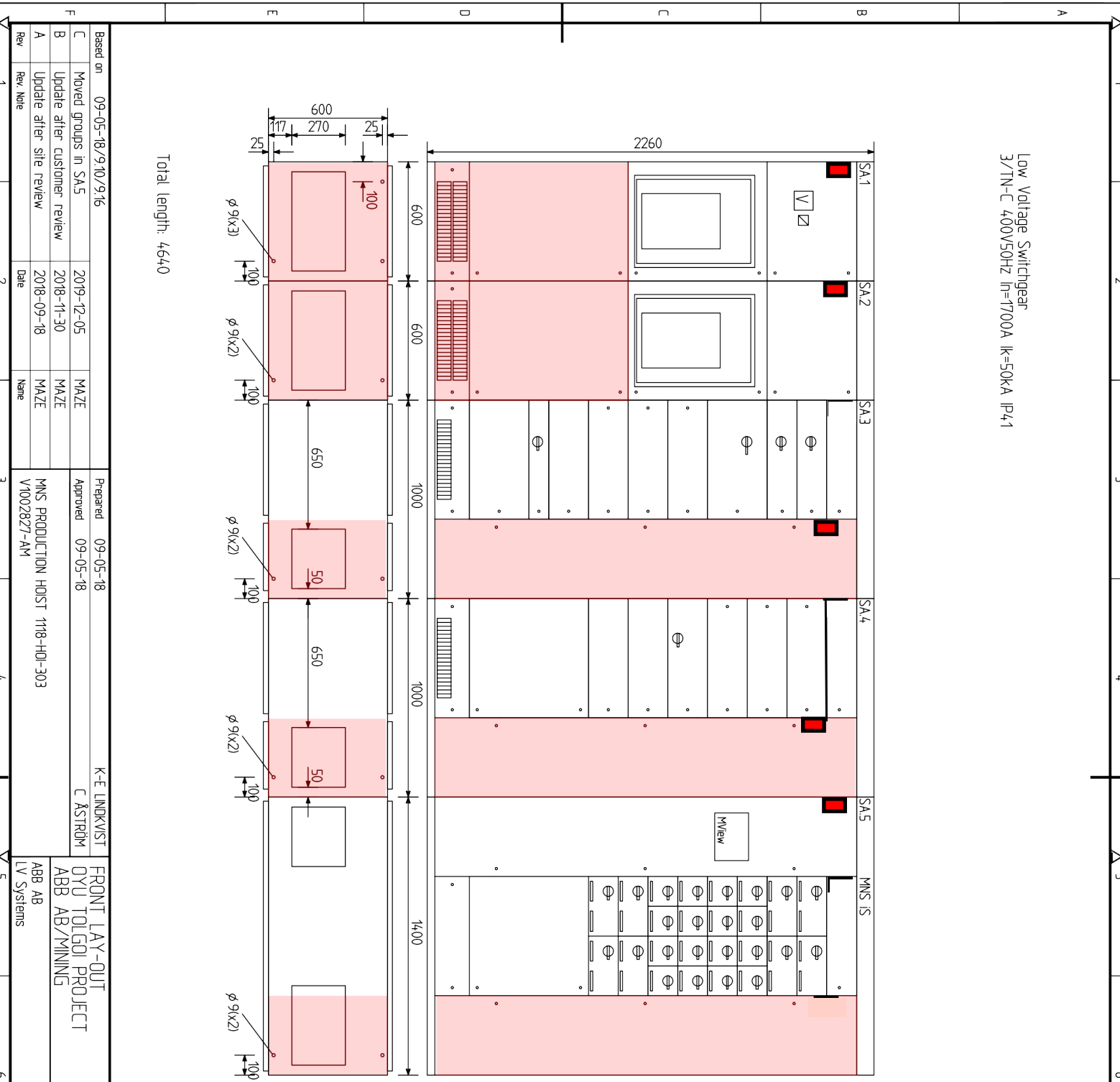


Low Voltage Switchgear  
3/TN-C 400V/50Hz In=1700A Ik=50kA P41

Total length: 4640



Rev	Rev. Note	Date	Name
A	Update after site review	2018-09-18	MAZE
B	Update after customer review	2018-11-30	MAZE
C	Moved groups in SA5	2019-12-05	MAZE

Based on	09-05-18/9-10/9-16
Prepared	09-05-18
Approved	09-05-18

Project	MNS PRODUCTION HOIST 1118-HOI-303
Client	ABB AB
System	LV Systems

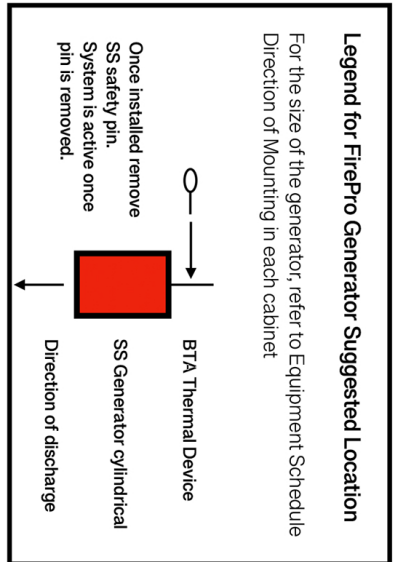
Responsible	1137-65-G2-8031
Rev. No.	1

## FirePro Fire Suppression System

### Suggested Location Layout Per Cabinet

#### Fire Safety Equipment

#### PRODUCTION HOIST MCC



**Legend for FirePro Generator Suggested Location**

For the size of the generator, refer to Equipment Schedule  
Direction of Mounting in each cabinet

Once installed remove  
SS safety pin.  
System is active once  
pin is removed.

<b>JACOBS</b>	Contractor/Supplier/Vendor Technical Document and Drawing Review for SA1509AD - 01 Underground Project	<b>Oyu Tolgoi</b>
1	Reviewed with No Comments. (Contractor/Supplier/Vendor may proceed)	
2	Reviewed and resident "Incorporating comments. (Contractor/Supplier/Vendor may proceed)	
3	Corrected with Major Comments. (Contractor/Supplier/Vendor must submit a revision)	
4	Not Reviewed - Received For Information Only. (No further submission is required)	
5	Received Certified/Equipment Package Vendor Document. Received As Built - Contractor Document.	
6	Cancelled.	
YES	Submit Certified Document.	
NO		
Responsible Engineer	Name: [Signature] Date: [Date]	Engineer Signature System for the Project DAG Gerdemant Tudev - Oyu Tolgoi email:gerdemant.tudev@oyutolgoi.com Phone: 99003 51 13 91 528
Equipment Tag No.	1137-65-G2-8031	
Client Document No.	CW211715-B001-0022_R3	
Jacobs Document No. and Revision	1137-65-G2-8031	

APPROPRIATION TO PROJECT DOES NOT RELIEVE THE VENDOR/CONTRACTOR OF ANY RESPONSIBILITY, OBLIGATION OR LIABILITY UNDER THE PURCHASE ORDER/CONTRACT. NO RESPONSIBILITY IS ASSUMED BY JACOBS FOR CORRECTNESS OF DIMENSIONS OR DETAILS. SHOP DRAWINGS ARE ACCEPTED AS FOR INFORMATION ONLY (NOT REVIEWED). VENDOR/CONTRACTOR IS FULLY RESPONSIBLE FOR SHOP DRAWINGS.