

# FirePro Fire Suppression Automatic Total Flood System on Detection Layout

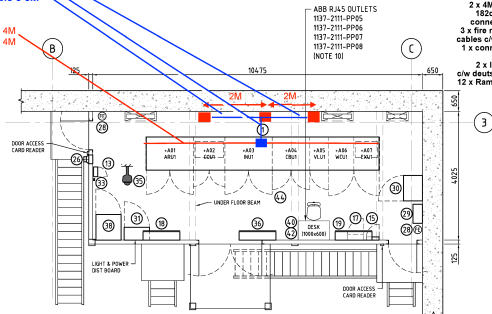
Connecting cable for each generator from the V5 thermal actuator to the linear connection J-box

Cable 1 - 5M  
Cable 2 - 2M  
Cable 3 - 5M

Linear 1 - 4M  
Linear 2 - 4M

Equipment provided for this risk

- 3 x 5700g generators
- 3 x V5 thermal actuators fitted to the generator
- 3 x FP-6100 mounting brackets
- 2 x 4M linear detection cables
- 182degC c/w deutsch plug connectors & mounting clips
- 3 x fire rated screened connecting cables c/w deutsch plug connectors
- 1 x connecting J-box c/w deutsch plug connectors.
- 2 x linear detection cables c/w deutsch plugs & mounting clips
- 12 x Ramsel bolts for fitting bracket
- 2 x warning signs

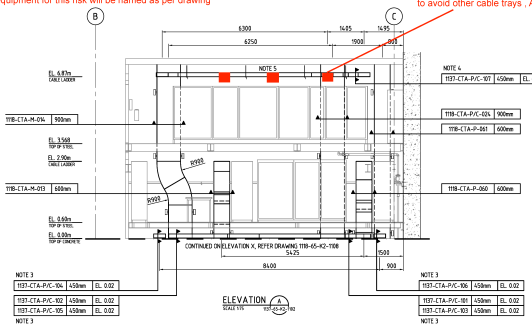


**PLAN - SERVICE HOIST UPPER SWITCHROOM EQUIPMENT LAYOUT**  
1137-SRM-2102  
SCALE 1:50

Note FirePro equipment for this risk will be named as per drawing

Ceiling to top of holding bracket approx. 500mm

NOTE the generator should be positioned to avoid other cable trays, AC ducts etc



## Fire Safety Equipment

Revision A - Location of FirePro fire suppression generators. Purchase order # - CW2147461 Project # -3011010265  
Service Hoist Upper Switchroom - 1813-ESS-2001-