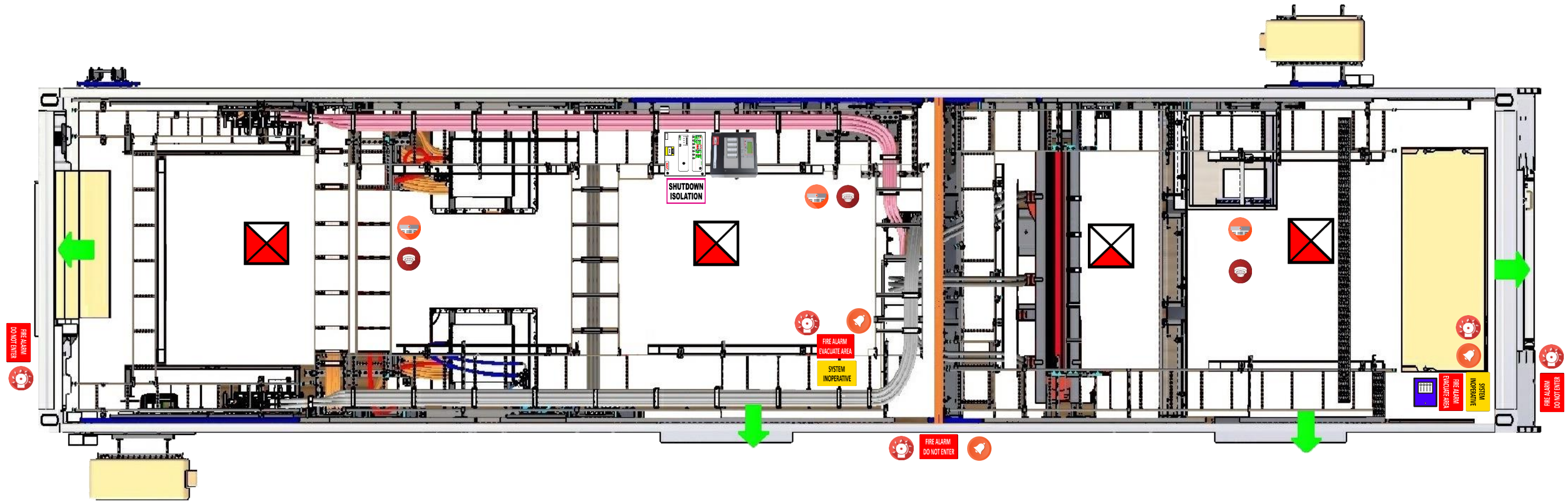


Fire Suppression System General Arrangement



BILL OF MATERIALS

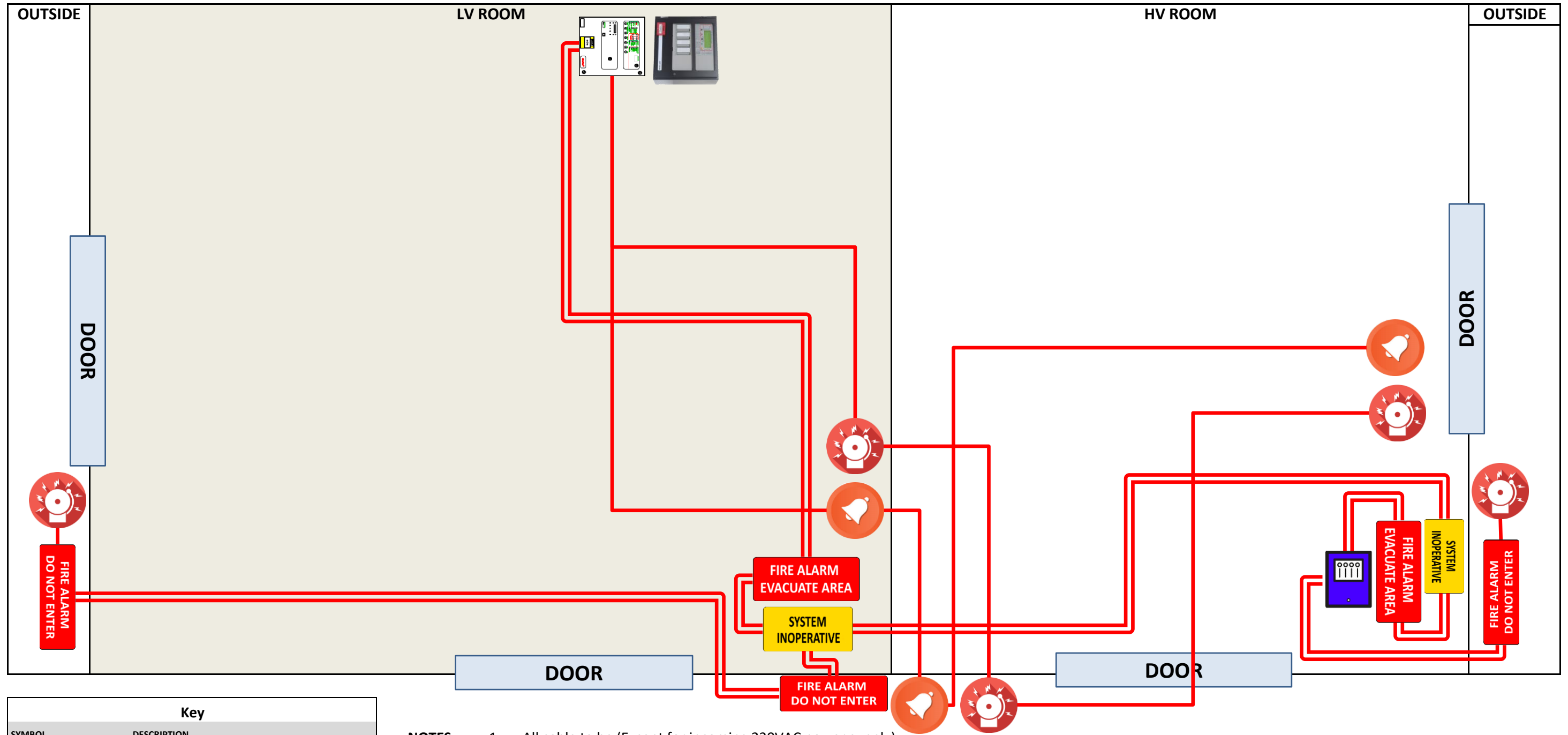
SYMBOL	QTY	DESCRIPTION
	5	Siren / Strobe
	3	Siren
	3	Hochiki 60°C RoR Thermal Detector
	3	Hochiki Photo Electric Smoke Detector
	2	FirePro Aerosol Generator - 3000G
	1	FirePro Aerosol Generator - 2000G
	1	FirePro Aerosol Generator - 1200G
	1	Sigma XT - 2 Zone Conventional FIP
	1	AFP 3030 Fire Indicator Panel
	1	Local Control Station
	1	Shutdown Isolation Switch
	2	Sign - Fire Alarm - Evacuate Area
	3	Sign - Fire Alarm - Do Not Enter - WP
	2	Sign - System Inoperative

NOTES:

- All cable to be (Except for incoming 230VAC power supply)
 - ✦ Fire Rated
 - ✦ Shielded
 - ✦ Outer insulation RED
 - ✦ Conductors to be min 0.75mm
- Locations of devices are general only
- All FirePro units, detection, signs and sirens are controlled via Sigma XT FIP
- AFP-3030 takes Fire/Fault signal from Sigma XT, all circuits supervised.
- ACTIVATION TO BE BASED ON both Thermal and Smoke Detectors in Alarm
- Shutdown to be based on EITHER Thermal or Smoke Detectors in Alarm
- On Alarm, Estop to be activated and all AC to be Shutdown

FIRE SAFETY EQUIPMENT PTY LTD		
Drawn By	Title	Drawing No
PM	Cargotec Morebank Fast Charge Fire Suppression System	FC-1 Rev.3
Date	23-11-20	

Signs and Sirens - Wiring Diagram



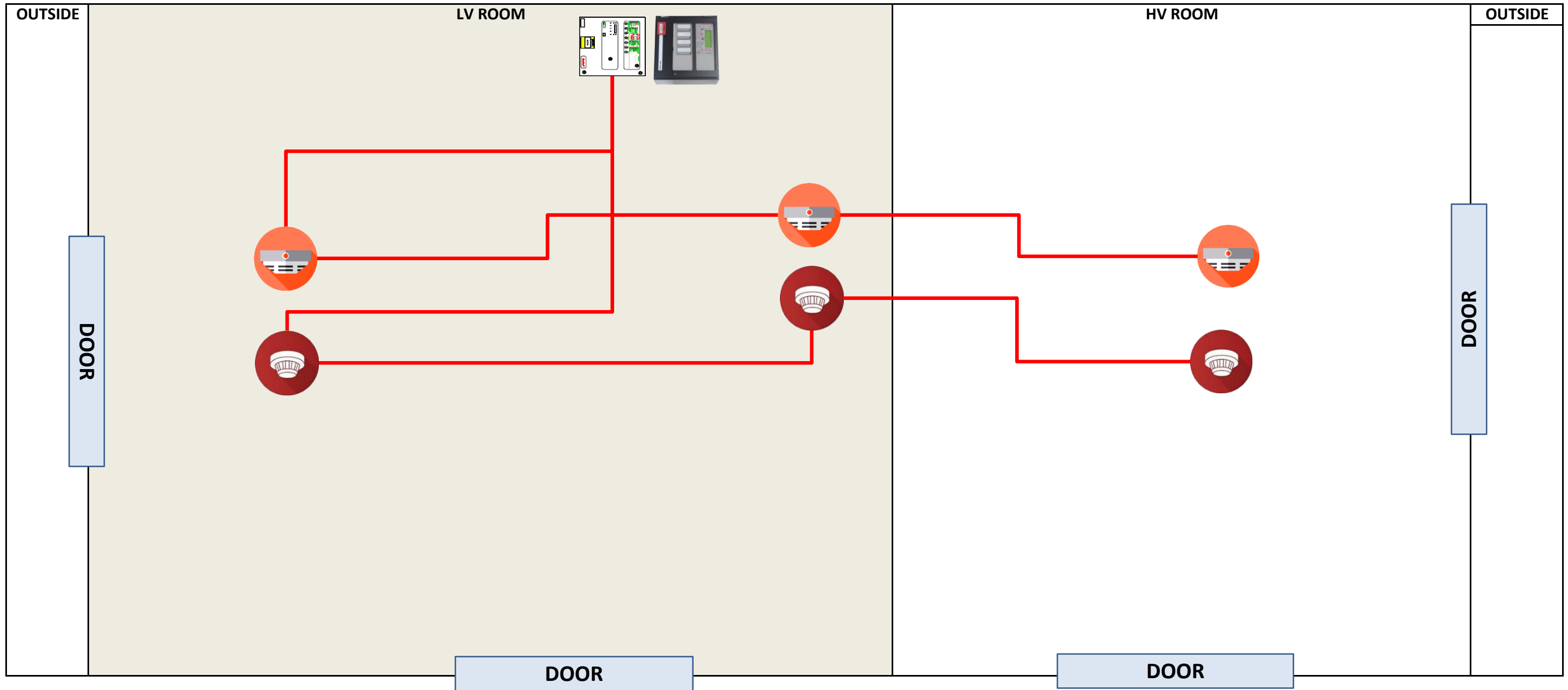
Key	
SYMBOL	DESCRIPTION
	Siren / Strobe
	Siren
	Local Control Station
	Sign - Fire Alarm - Evacuate Area
	Sign - Fire Alarm - Do Not Enter - WP
	Sign - System Inoperative

- NOTES:**
- All cable to be (Except for incoming 230VAC power supply)
 - ✦ Fire Rated
 - ✦ Shielded
 - ✦ Outer insulation RED
 - ✦ Conductors to be min 0.75mm
 - Locations of devices are general only
 - All FirePro units, detection, signs and sirens are controlled via Sigma XT FIP
 - AFP-3030 takes Fire/Fault signal from Sigma XT, all circuits supervised.
 - ACTIVATION TO BE BASED ON both Thermal and Smoke Detectors in Alarm
 - Shutdown to be based on EITHER Thermal or Smoke Detectors in Alarm
 - On Alarm, Estop to be activated and all AC to be Shutdown

0

FIRE SAFETY EQUIPMENT PTY LTD		
Drawn By	Title	Drawing No
PM	Cargotec Morebank Fast Charge Fire Suppression System	FC-2 Rev.3
Date	23-11-20	

Detection - Wiring Diagram

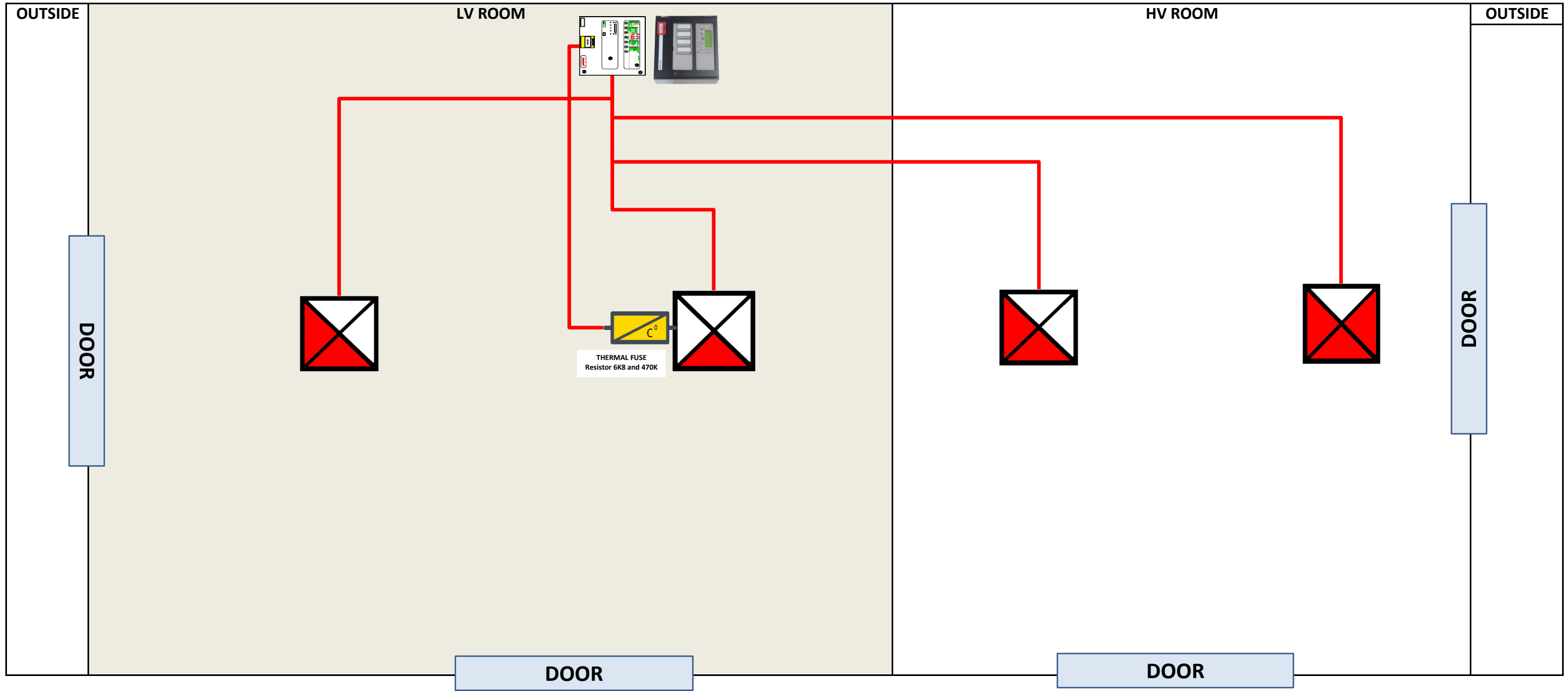


Key	
SYMBOL	DESCRIPTION
	Hochiki 60°C RoR Thermal Detector
	Hochiki Photo Electric Smoke Detector

- NOTES:**
- All cable to be (Except for incoming 230VAC power supply)
 - ✦ Fire Rated
 - ✦ Shielded
 - ✦ Outer insulation RED
 - ✦ Conductors to be min 0.75mm
 - Locations of devices are general only
 - All FirePro units, detection, signs and sirens are controlled via Sigma XT FIP
 - AFP-3030 takes Fire/Fault signal from Sigma XT, all circuits supervised.
 - ACTIVATION TO BE BASED ON both Thermal and Smoke Detectors in Alarm
 - Shutdown to be based on EITHER Thermal or Smoke Detectors in Alarm
 - On Alarm, Estop to be activated and all AC to be Shutdown

FIRE SAFETY EQUIPMENT PTY LTD		
Drawn By	Title	Drawing No
PM	Cargotec Morebank Fast Charge Fire Suppression System	FC-3 Rev.3
Date 23-11-20		

FirePro Aerosol Generators - Wiring Diagram



Key	
SYMBOL	DESCRIPTION
	2 FirePro Aerosol Generator - 3000G
	1 FirePro Aerosol Generator - 2000G
	1 FirePro Aerosol Generator - 1200G

- NOTES:**
- 1 All cable to be (Except for incoming 230VAC power supply)
 - ✦ Fire Rated
 - ✦ Shielded
 - ✦ Outer insulation RED
 - ✦ Conductors to be min 0.75mm
 - 2 Locations of devices are general only
 - 3 All FirePro units, detection, signs and sirens are controlled via Sigma XT FIP
 - 4 AFP-3030 takes Fire/Fault signal from Sigma XT, all circuits supervised.
 - 5 ACTIVATION TO BE BASED ON both Thermal and Smoke Detectors in Alarm
 - 6 Shutdown to be based on EITHER Thermal or Smoke Detectors in Alarm
 - 7 On Alarm, Estop to be activated and all AC to be Shutdown

FIRE SAFETY EQUIPMENT PTY LTD		
Drawn By	Title	Drawing No
PM	Cargotec Morebank Fast Charge Fire Suppression System	FC-4 Rev.3
Date 23-11-20		