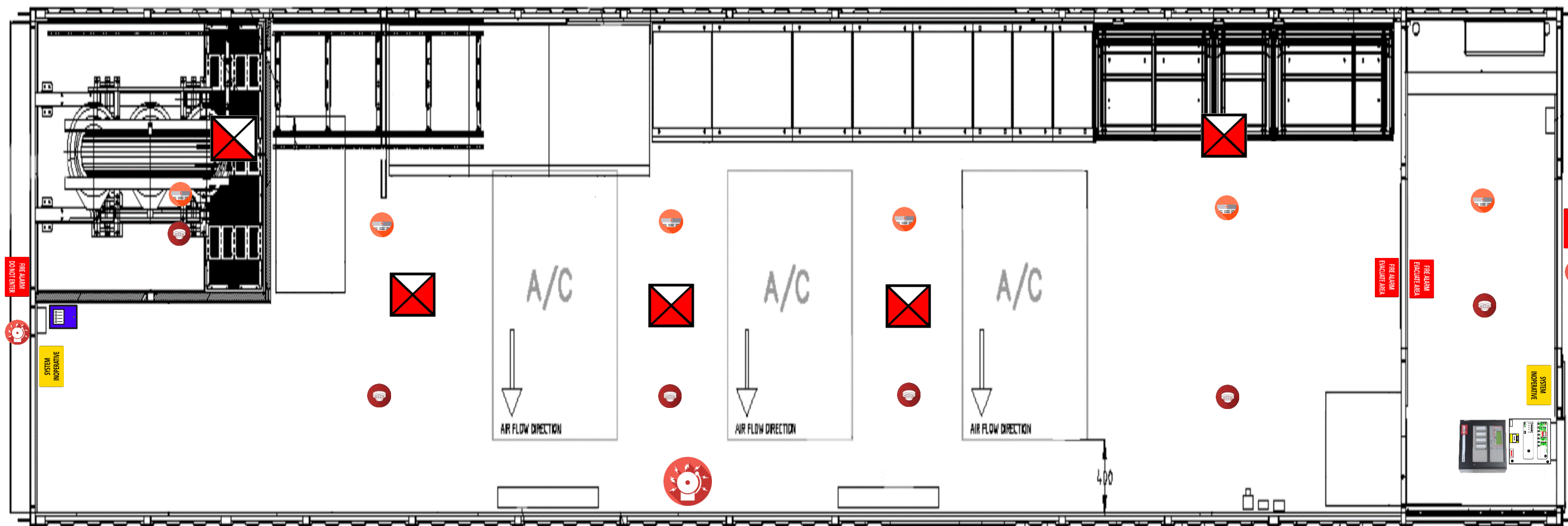


Fire Suppression System General Arrangement



NOTES:

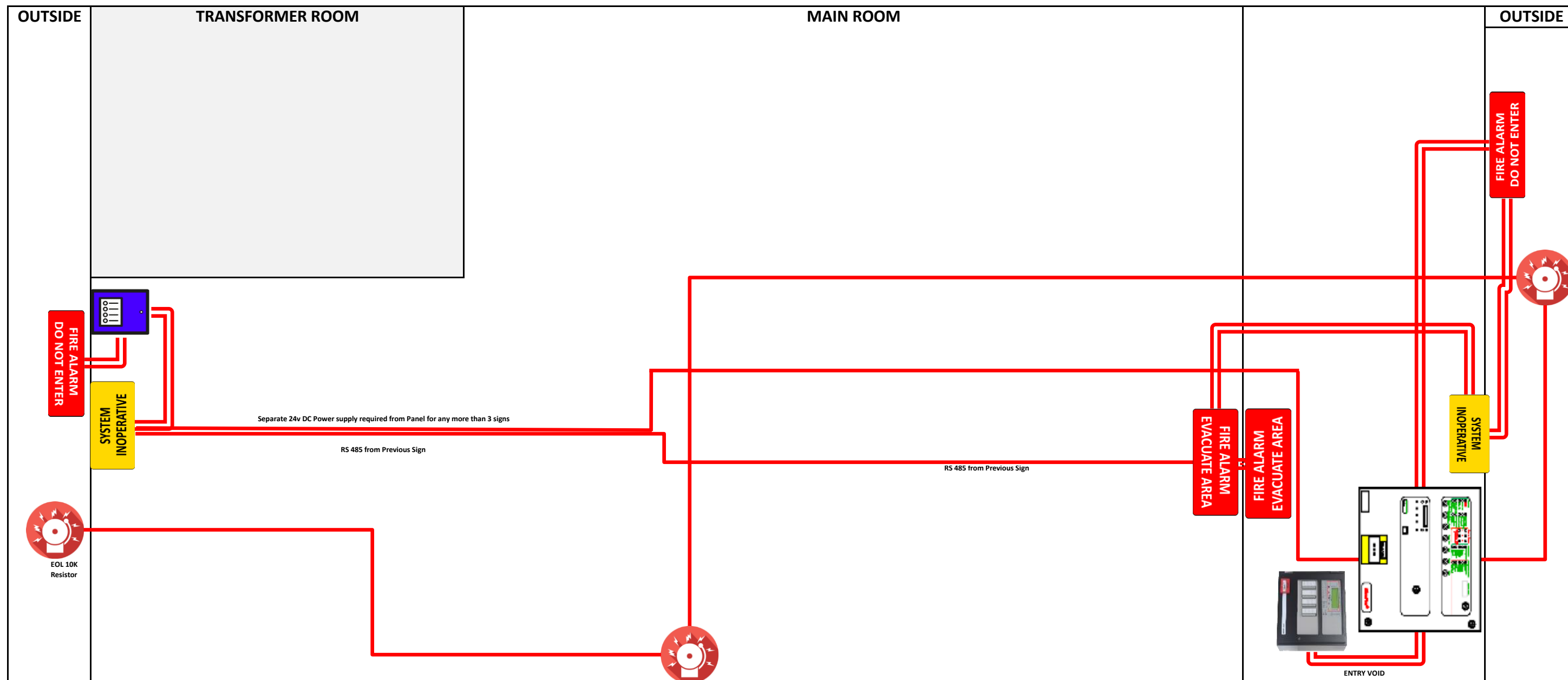
- 1 All cable to be (Except for incoming 230VAC power supply)
 - ✦ Fire Rated to 120m
 - ✦ Shielded
 - ✦ Outer insulation RED
 - ✦ Conductors to be min 0.75mm Stranded
- 2 Locations of devices are general only
- 3 All detection, signs and sirens are controlled via AFP-3030 FIP
- 4 FirePro Aerosol Generators are controlled via Sigma XT Panel
- 5 All detection, signs and sirens are controlled via AFP-3030 FIP
- 6 Sigma XT FIP takes activation signal from AFP-3030
- 7 AFP-3030 takes Fire/Fault signal from Sigma XT, all circuits supervised.
- 8 Power to FIP AFP-3030 and Sigma XT 230AC
- 9 ACTIVATION TO BE BASED ON both Thermal and Smoke Detectors in Alarm
- 10 Shutdown to be based on EITHER Thermal or Smoke Detectors in Alarm
- 11 On Alarm, Estop to be activated and all AC to be Shutdown

BILL OF MATERIALS

SYMBOL	QTY	DESCRIPTION
	3	Flashni Siren / Strobe
	6	Hochiki 60°C RoR Thermal Detector
	6	Hochiki Photo Electric Smoke Detector
	1	FirePro Aerosol Generator - 2000G
	4	FirePro Aerosol Generator - 3000G
	1	Sigma XT - 2 Zone Conventional FIP
	1	AFP 3030 Fire Indicator Panel
	1	Local Control Station
	2	Sign - Fire Alarm - Evacuate Area
	2	Sign - Fire Alarm - Do Not Enter - WP
	1	Sign - System Inoperative

FIRE SAFETY EQUIPMENT PTY LTD		
Drawn By	Title	Drawing No
PM	Cargotec Morebank CASC Fire Suppression System	CM-1 Rev.6
Date		
17-02-20		

Signs and Sirens - Wiring Diagram

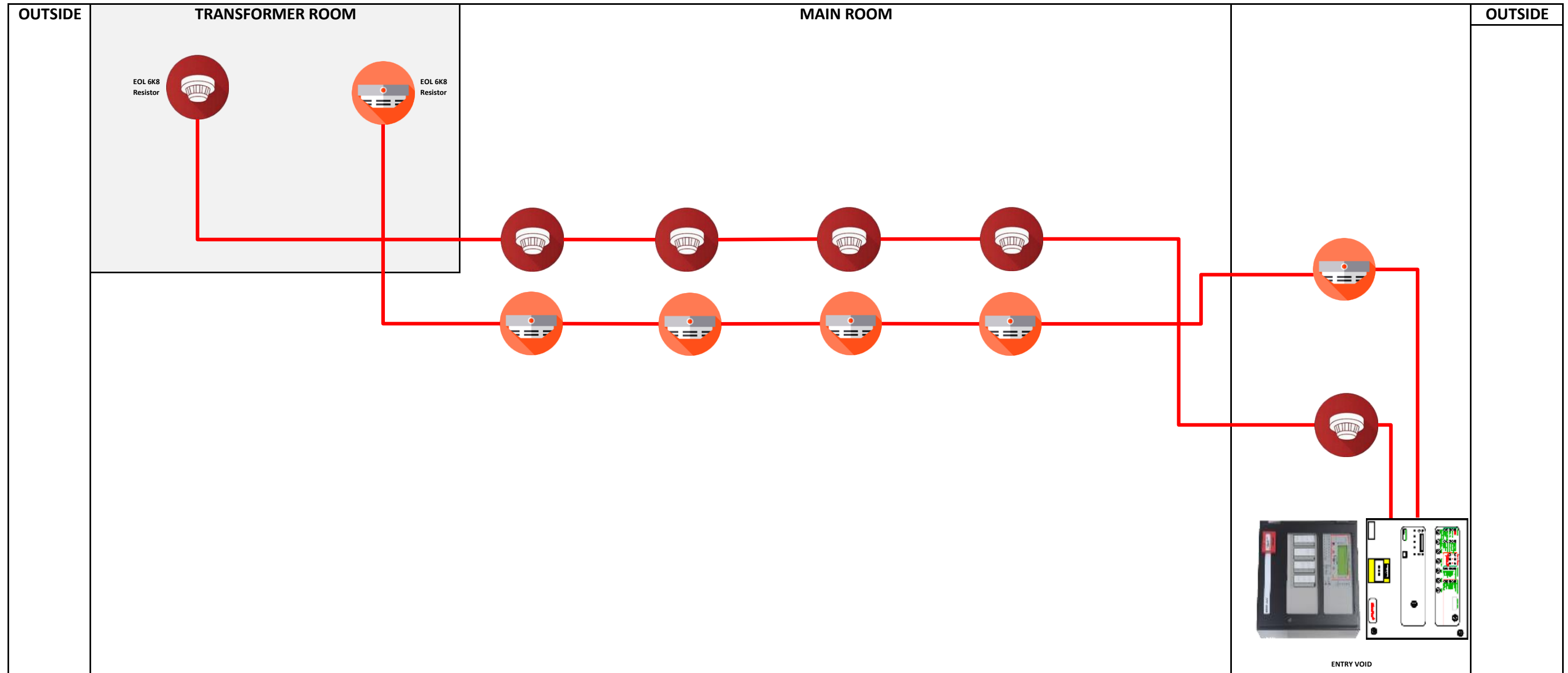


BILL OF MATERIALS		
SYMBOL	QTY	DESCRIPTION
	3	Flashni Siren / Strobe
	6	Hochiki 60°C RoR Thermal Detector
	6	Hochiki Photo Electric Smoke Detector
	1	FirePro Aerosol Generator - 2000G
	4	FirePro Aerosol Generator - 3000G
	1	Sigma XT - 2 Zone Conventional FIP
	1	AFP 3030 Fire Indicator Panel
	1	Local Control Station
	2	Sign - Fire Alarm - Evacuate Area
	2	Sign - Fire Alarm - Do Not Enter - WP
	1	Sign - System Inoperative

- NOTES:**
- All cable to be (Except for incoming 230VAC power supply)
 - ✦ Fire Rated to 120m
 - ✦ Shielded
 - ✦ Outer insulation RED
 - ✦ Conductors to be min 0.75mm Stranded
 - Signs require RS485 and 24vDC power supply.
 - Status power from Panel capable of supplying 3 signs
 - For more than 3 signs need to provide separate supply - available from FIP
 - Each FP unit to have separate cable back to FIP
 - Closest FP unit to the FIP to be fitted with a Thermal Fuse for System activated advice.
 - Shutdowns to be operated on 1st Stage alarm
 - See Attached Schedule of Devices and Cables

FIRE SAFETY EQUIPMENT PTY LTD		
Drawn By	Title	Drawing No
PM	Cargotec Morebank CASC Fire Suppression System	CM-2 Rev.6
Date		
17-02-20		

Detection - Wiring Diagram



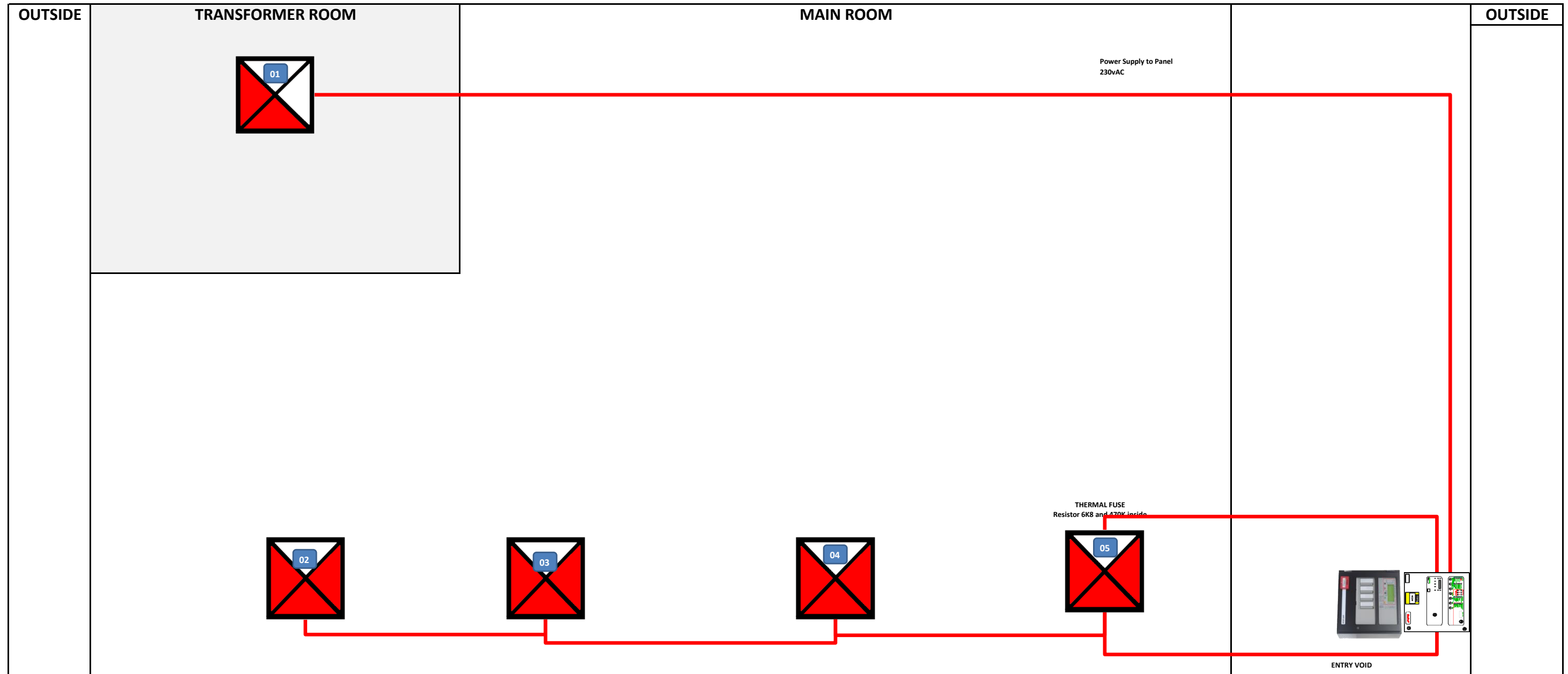
BILL OF MATERIALS

SYMBOL	QTY	DESCRIPTION
	3	Flashni Siren / Strobe
	6	Hochiki 60°C RoR Thermal Detector
	6	Hochiki Photo Electric Smoke Detector
	1	FirePro Aerosol Generator - 2000G
	4	FirePro Aerosol Generator - 3000G
	1	Sigma XT - 2 Zone Conventional FIP
	1	AFP 3030 Fire Indicator Panel
	1	Local Control Station
	2	Sign - Fire Alarm - Evacuate Area
	2	Sign - Fire Alarm - Do Not Enter - WP
	1	Sign - System Inoperative

- NOTES:**
- All cable to be (Except for incoming 230VAC power supply)
 - ✦ Fire Rated to 120m
 - ✦ Shielded
 - ✦ Outer insulation RED
 - ✦ Conductors to be min 0.75mm Stranded
 - Signs require RS485 and 24vDC power supply.
 - Status power from Panel capable of supplying 3 signs
 - For more than 3 signs need to provide separate supply - available from FIP
 - Each FP unit to have separate cable back to FIP
 - Closest FP unit to the FIP to be fitted with a Thermal Fuse for System activated advice.
 - Shutdowns to be operated on 1st Stage alarm

FIRE SAFETY EQUIPMENT PTY LTD		
Drawn By	Title	Drawing No
PM	Cargotec Morebank	CM-31
Date	CASC Fire Suppression System	Rev.5
29-08-19		

FirePro Aerosol Generators - Wiring Diagram



BILL OF MATERIALS

SYMBOL	QTY	DESCRIPTION
	3	Flashni Siren / Strobe
	6	Hochiki 60°C RoR Thermal Detector
	6	Hochiki Photo Electric Smoke Detector
	1	FirePro Aerosol Generator - 2000G
	4	FirePro Aerosol Generator - 3000G
	1	Sigma XT - 2 Zone Conventional FIP
	1	AFP 3030 Fire Indicator Panel
	1	Local Control Station
	2	Sign - Fire Alarm - Evacuate Area
	2	Sign - Fire Alarm - Do Not Enter - WP
	1	Sign - System Inoperative

NOTES:

- All cable to be (Except for incoming 230VAC power supply)
 - ✦ Fire Rated to 120m
 - ✦ Shielded
 - ✦ Outer insulation RED
 - ✦ Conductors to be min 0.75mm Stranded
- Each FP unit to have separate cable back to FIP
- All detection, signs and sirens are controlled via AFP-3030 FIP
- FP unit 5 to be fitted with a Thermal Fuse for System activated advice.
- FP unit 5 to be fitted with a Thermal Fuse for System activated advice.
- FirePro Aerosol Generators are controlled via Sigma XT Panel
- All detection, signs and sirens are controlled via AFP-3030 FIP
- Sigma XT FIP takes activation signal from AFP-3030
- AFP-3030 takes Fire/Fault signal from Sigma XT, all circuits supervised.

FIRE SAFETY EQUIPMENT PTY LTD

Drawn By	Title	Drawing No
PM	Cargotec Morebank CASC Fire Suppression System	CM-4 Rev.5
Date		
29-08-19		