



**GETZ MANUFACTURING
PART NO.: 4G58918
MODEL: AP 303 FH
TRIPLE HOSE TESTER
(Revised 4/10/17)**

**THE GETZ AIR HYDROTEST PUMP
OPERATION AND PARTS MANUAL
MODEL #AP-303-FH**

TABLE OF CONTENTS

PAGE #

1	OPERATING REQUIREMENTS
2	SET-UP & OPERATING INSTRUCTIONS
3	OPERATION DIAGRAM
4	PLAN VIEW PRINT
5	ELEVATION VIEW PRINT
6	PART NUMBER LIST
7	CAPS AND PLUGS

OPERATING REQUIREMENTS

MOTIVE POWER SOURCE

1. AIR COMPRESSOR PRODUCING LOW PRESSURE AIR
2. AIR REQUIREMENT - 60-70 P.S.I. AT 30-35 CUBIC FEET PER MINUTE

MEDIA NEEDED FOR HYDROTESTING FIRE HOSES:

1. CLEAN WATER FROM A WATER SPICKET.
2. INCOMING AIR SUPPLY HOSE - 1/2" I.D. FLEXIBLE AIR HOSE - CUSTOMER SUPPLIED.

INLET WATER SUPPLY HOSE:

3/4" I.D. GARDEN HOSE - CUSTOMER SUPPLIED

OIL FOR INLINE OIL MIST LUBRICATOR:

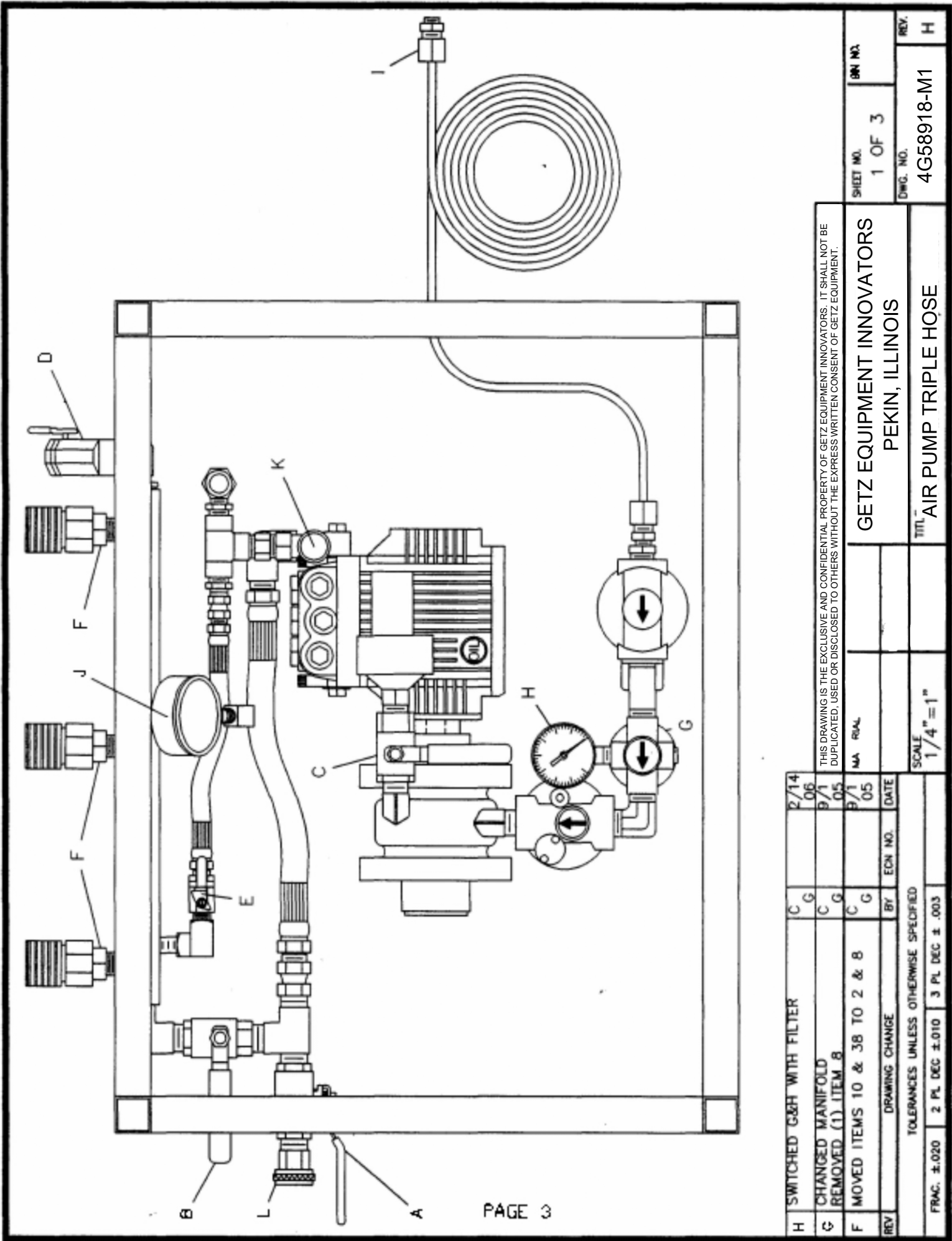
1. OIL TYPE - SAE #10 DETERGENT AUTOMOTIVE ENGINE OIL
2. GAST PART #AD220 LUBRICATOR OIL

SAFETY EQUIPMENT REQUIRED:

SAFETY GLASSES

SET-UP & OPERATING INSTRUCTIONS

1. Connect a garden hose to a clean water source. Open the water valve and purge the hose of any dirt and air. Connect the hose to the tester at swivel connection L.
2. Connect the tester inlet air line I, to your compressed air source.
3. All valves (A, B, C, D, and E) should be in the off/closed position.
4. Purge the tester of air by opening valves A, D, and E until only water (no air) is present at valve D. Close Valve E, open valve B and continue to purge until only water is present at valve D. Close valves D and B.
5. Set the test pressure by adjusting valve K. Clockwise to increase pressure and counter clockwise to decrease pressure. This unit is preset to 100 PSI from the factory. Open the air source to the tester. The regulator is preset from the factory to 60 PSI and shown on gauge H. Open valves E and C. Test pressure is shown on Gauge J. Slowly increase or decrease the pressure at valve K. When the test pressure is set, close valves C and A. Relieve the manifold pressure by opening valve D. When the pressure has been relieved close valve D.
6. Attach the hose caps to the hose to be tested. Roll the hoses out in a straight line to the tester and attach to the manifold at connection F. Open the valve on the hose cap, and open valves A and B. Purge the hose until only water is present at the ball valve. Close the cap ball valve and close valve B.
7. Begin testing by marking the hose fittings. Open valve E. Pressurize the hose by opening valve C. When the test pressure is reached, close valves E, C and A. Observe the pressure gauge J for five minutes for a drop in pressure. Relieve the pressure by opening valve D and open the cap valves to drain the water. Check the fittings for any movement. NFPA and all local, state and federal laws and regulations pertaining to hose testing should be strictly followed. Detach the hose and remove the fittings.
8. Shut the tester down by closing the inlet air and water to the tester. Open valves A and D to allow the water to drain. Remove the garden hose and air supply line. This tester must be stored in a warm area above freezing. Water left in the system can cause severe damage.



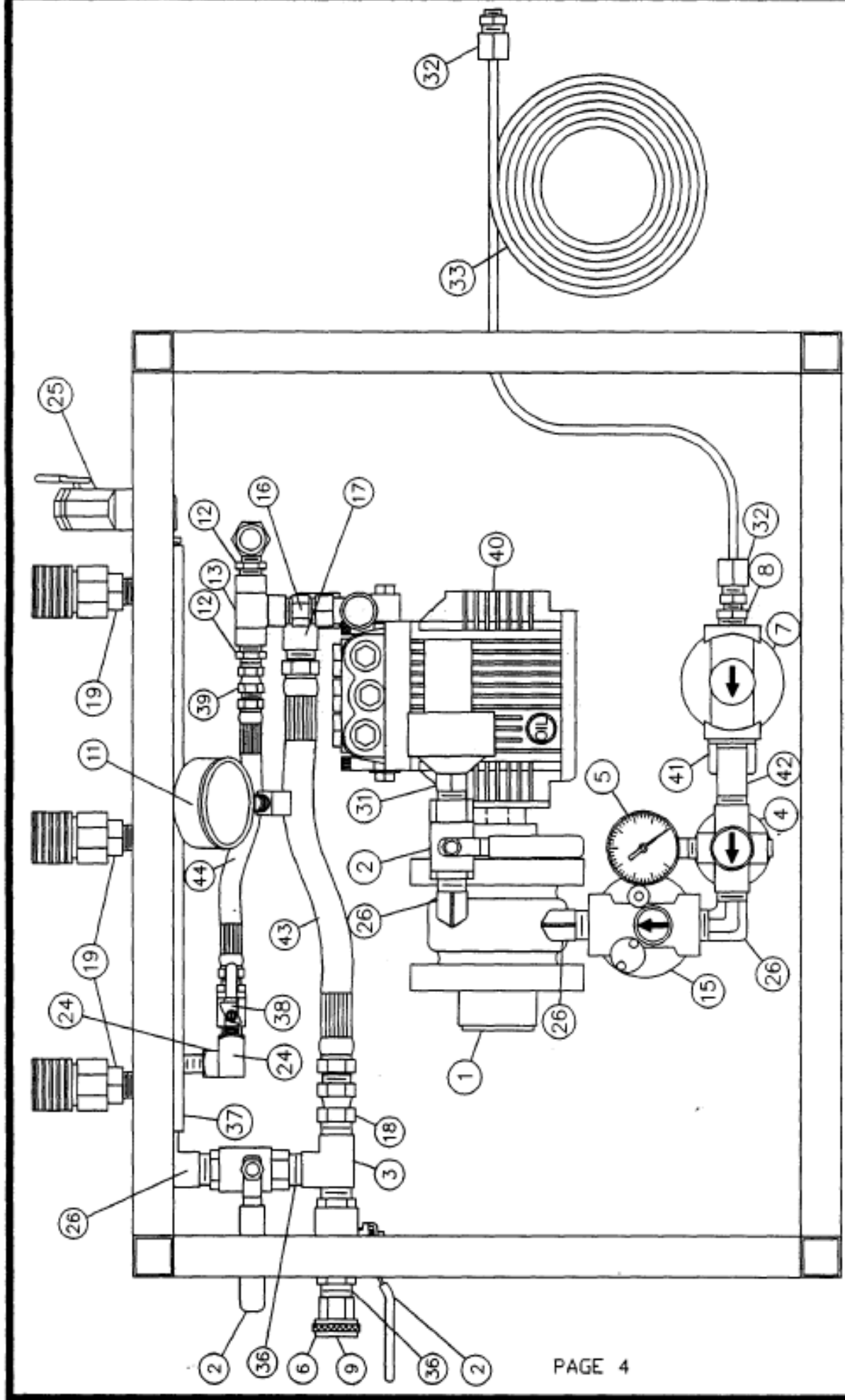
THIS DRAWING IS THE EXCLUSIVE AND CONFIDENTIAL PROPERTY OF GETZ EQUIPMENT INNOVATORS. IT SHALL NOT BE DUPLICATED, USED OR DISCLOSED TO OTHERS WITHOUT THE EXPRESS WRITTEN CONSENT OF GETZ EQUIPMENT.

GETZ EQUIPMENT INNOVATORS
PEKIN, ILLINOIS

TITL. AIR PUMP TRIPLE HOSE

REV.	DATE	EDN. NO.	BY	MA	SCALE
H	2/14/06		C	REAL	1/4" = 1"
G	8/1/05		C		
F	8/1/05		C		
DRAWING CHANGE					
TOLERANCES UNLESS OTHERWISE SPECIFIED					
FRAC. ±.020 2 PL. DEC ±.010 3 PL. DEC ±.003					

SHEET NO. 1 OF 3
DWG. NO. 4G58918-M1
REV. H



I	SWITCHED #7 & #4	C	G	2/14	06
H	CHANGED #10 TO #25	C	G	2/10	06
G	CHANGED MANIFOLD REMOVED (1) ITEM 8	C	G	9/1	05
REV	DRAWING CHANGE	BY	ECN NO.	DATE	
TOLERANCES UNLESS OTHERWISE SPECIFIED					
FRAC.	±.020	2 PL	DEC ±.010	3 PL	DEC ±.003

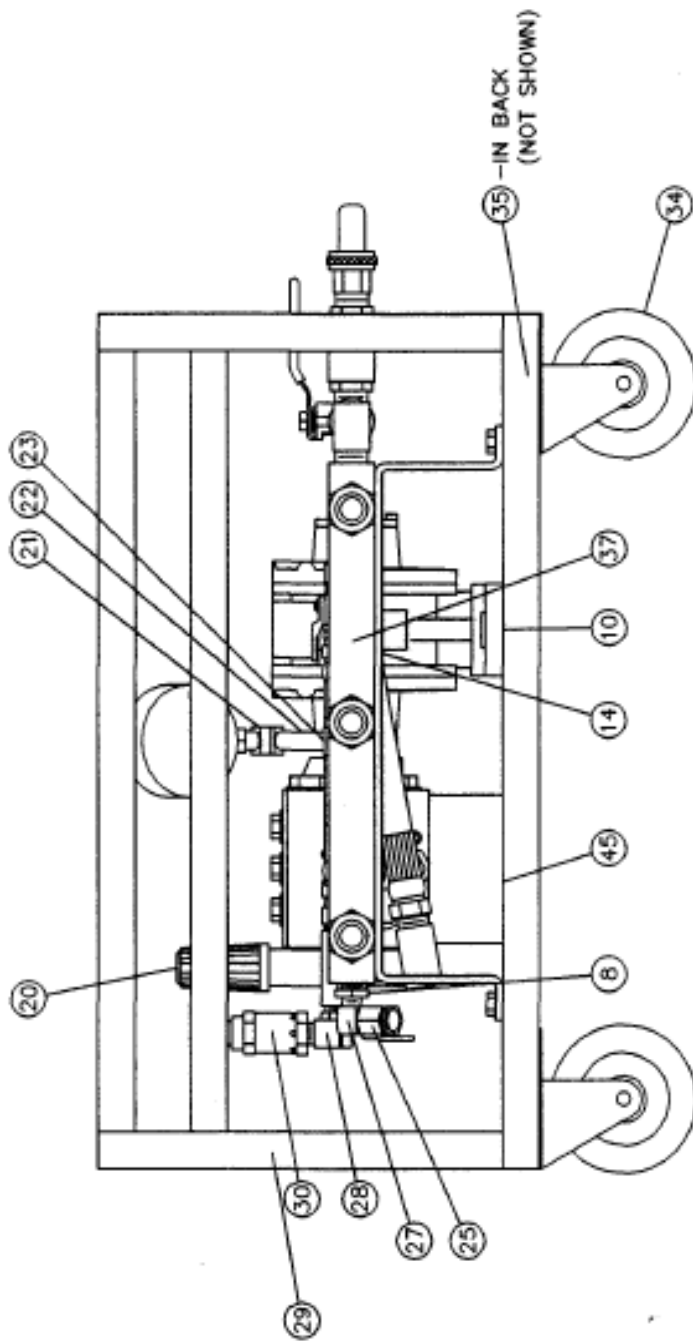
THIS DRAWING IS THE EXCLUSIVE AND CONFIDENTIAL PROPERTY OF GETZ EQUIPMENT INNOVATORS. IT SHALL NOT BE DUPLICATED, USED OR DISCLOSED TO OTHERS WITHOUT THE EXPRESS WRITTEN CONSENT OF GETZ EQUIPMENT.

GETZ EQUIPMENT INNOVATORS
PEKIN, ILLINOIS

MATERIAL
FINISH
DATE
SCALE
1/4" = 1"

DATE
4-3-92
DATE
R.L.R.
DATE
4-3-92
DATE
4-3-92

SHEET NO.
1 OF 3
DWG. NO.
4G58918-M2
REV.
1



D	CHANGED #39 & ADDED #41	C	G	4/22
C	OVERALL DRAWING CHANGE	R	M	5/76
B	REMOVED ITEM #3	R	M	04
A	ADDED ITEM #39	R	M	11/4
REV	DRAWING CHANGE	BY	ECN NO.	DATE
				94

TOLERANCES UNLESS OTHERWISE SPECIFIED
 FRAC. ±.020 2 PL DEC ±.010 3 PL DEC ±.003

THIS DRAWING IS THE EXCLUSIVE AND CONFIDENTIAL PROPERTY OF GETZ EQUIPMENT INNOVATORS. IT SHALL NOT BE DUPLICATED, USED OR DISCLOSED TO OTHERS WITHOUT THE EXPRESS WRITTEN CONSENT OF GETZ EQUIPMENT.

FINISH
 R.P.R.
 DATE
 4-3-92

GETZ EQUIPMENT INNOVATORS
 PEKIN, ILLINOIS

TITLE
 AIR PUMP TRIPLE HOSE

SHEET NO.
 2 OF 3

DWG. NO.
 4G58918-M3

REV.
 E

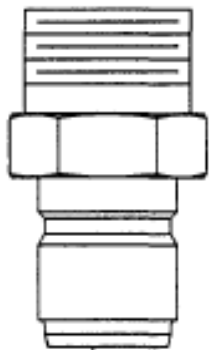
#	PART #	DESCRIPTION	U/M	QTY	#	PART #	DESCRIPTION	U/M	QTY
1	1G52188	MOTOR AIR FOR AP 303 FH	EA	1	24	1G51624	PIPE ELB BR 1/4 ST	EA	2
2	1G0084	VALVE BALL 1/2" BRASS	EA	3	25	1G0042	VALVE 1/4 TURN 1/4 MALE X 1/4 FMLE BRASS	EA	1
3	1G0102	TEE BRASS STREET 1/2	EA	1	26	1G0077	ELBOW BRASS 90 DEGREE 1/2 NPT	EA	4
4	1G58737	REG 866HE	EA	1	27	1G51624	PIPE ELB BR 1/4 ST	EA	1
5	1G0064	GAUGE DRY 0-160 PSI 1/4 BTM CONN	EA	1	28	1G51624	PIPE ELB BR 1/4 ST	EA	1
6	1G0309	CONNECTOR BRASS GARDEN HOSE	EA	1	29	1G51321	FRAME HOSE HYDRO	EA	1
7	1G52189	FLTR AIR FOR AIR MOTOR	EA	1	30	1G0274	RELIEF VALVE 850 PSI	EA	1
8	1G0103	BUSHING BRASS REDUCIN 1/2 TO 1/4	EA	2	31	XXXXX	AIR MUFFLER	EA	1
9	1G51948	WASHER FILTER N 107	EA	1	32	1G0116	CONNECTOR PLASTIC 3/8 TUBE X 1/4 MPT	EA	2
10	1G53775	PLATE ALUM MOTOR AIR	EA	1	33	1G0048	TUBING POLY WHITE 1/4	FT	10
11	3G56190	GAUGE 600PSI GLY BTM CALIBRATE	EA	1	34	1G53592	CASTER SWIVEL 4"	EA	2
12	1G51683	PIPE RDCR BR 3/8 X 1/4	EA	2	35	1G53593	CASTER RIGID 4"	EA	2
13	1G51692	PIPE TEE 3/8 NPT (2090)	EA	1	36	1G0217	NIPPLE 1/2" NPT BRASS CLOSE	EA	2
14	1G51125	BRACKET MANIFOLD EP303FH	EA	1	37	1G53778	MANIFOLD EP/AP TESTER	EA	1
15	1G52190	LUBRICATOR FOR AIR MOTOR	EA	1	38	1G0042	VALVE 1/4 TURN 1/4 MALE X 1/4 FMLE BRASS	EA	1
16	1G53591	ADP VLV UNLOADER	EA	1	39	1G0054	SWIVEL CONN 1/4 MNPT X 1/4 FEMALE SWIVEL	EA	1
17	1G0291	1/2 BRASS ELBOW M/F	EA	1	40	1G0351	PUMP HOSE TESTER	EA	1
18	1G51864	SWIVEL MECH 1/2 (9205)	EA	1	41	1G53779	BRACE FILTER AP TESTER	EA	1
19	1G51823	SOCKET HANSON 1/2 EP-303-FH	EA	3	42	1G51648	PIPE NIP BR 1/2 X 2	EA	1
20	1G0352	UNLOADER VALVE HOSE TESTER	EA	1	43	3G56234	HOSE FILL TESTER HOSE AIR	EA	1
21	1G51621	PIPE ELB BR 1/4 FMLE	EA	1	44	3G56235	HOSE PRESSURE TESTER HOSE AP	EA	1
22	1G53780	HEX NIPPLE 1/4 NPT	EA	1	45	1G53776	PLATE ALUM PUMP AR	EA	2
23	1G0078	ELBOW BRASS 45 DEGREE STREET 1/4 NPT	EA	1					

H	REMOVED #10, CHANGED #46 TO #10, ADDED 1 TO #26	C G	2/10 06
G	CHANGED MANIFOLD & REMOVED (1) ITEM 8	C G	9/1 05
F	REMOVED ITEMS #11 & #38	C G	9/1 05
E	REMOVED TORQUE ARM #39 & ADDED ALUM PLATES #39 & #41	C G	4/22 05
REV	DRAWING CHANGE	BY	ECH. NO. DATE

THIS DRAWING IS THE EXCLUSIVE AND CONFIDENTIAL PROPERTY OF GETZ EQUIPMENT INNOVATORS. IT SHALL NOT BE DUPLICATED, USED OR DISCLOSED TO OTHERS WITHOUT THE EXPRESS WRITTEN CONSENT OF GETZ EQUIPMENT.

FINISH		SHEET NO.		BRN NO.	
R.P.R.		3 OF 3			
DATE		DWG. NO.		REV.	
4-3-92		4G58918-M4		H	
TITLE			GETZ EQUIPMENT INNOVATORS		
PUMP AIR HYDRA W/TRI MAN			PEKIN, ILLINOIS		
SCALE			TOLERANCES UNLESS OTHERWISE SPECIFIED		
1/4"=1'			FRAC. ±.020 2 PL DEC ±.010 3 PL DEC ±.003		

OPTIONAL

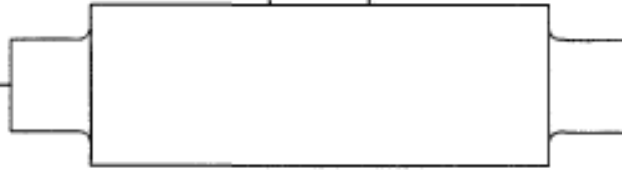


NOTE: HANSEN B4T-25
ADAPTER

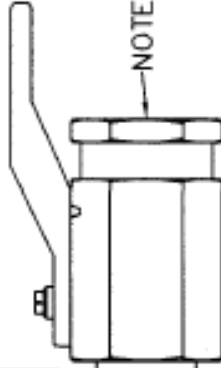


NOTE: HANSEN B-54
ADAPTER

CAP



PLUG



NOTE:

SMC 027-4F-4M-BT
BALL VALVE

CAPS AVAILABLE

- 112 IPT C 1 1/2" IPT CAP WITH BALL VALVE
- 112 NST C 1 1/2" NST CAP WITH BALL VALVE
- 212 IPT C 2 1/2" IPT CAP WITH BALL VALVE
- 212 NST C 2 1/2" NST CAP WITH BALL VALVE

PLUGS AVAILABLE

- 112 IPT P 1 1/2" IPT PLUG WITH NIPPLE
- 112 NST P 1 1/2" NST PLUG WITH NIPPLE
- 212 IPT P 2 1/2" IPT PLUG WITH NIPPLE
- 212 NST P 2 1/2" NST PLUG WITH NIPPLE

THIS DRAWING IS THE EXCLUSIVE AND CONFIDENTIAL PROPERTY OF GETZ EQUIPMENT INNOVATORS. IT SHALL NOT BE DUPLICATED, USED OR DISCLOSED TO OTHERS WITHOUT THE EXPRESS WRITTEN CONSENT OF GETZ EQUIPMENT.

REV	DRAWING CHANGE	BY	EON NO.	DATE	MATERIAL	FINISH	SHEET NO.	BN NO.	
					OWN BY CPG	CK'D KLR	1	DF 1	
TOLERANCES UNLESS OTHERWISE SPECIFIED							DWG. NO.	REV.	
FRAC. ±.020	2 PL DEC ±.010	3 PL DEC ±.003			SCALE 1/4"=1'	DATE 6-6-05	4G58918-M5		
GETZ EQUIPMENT INNOVATORS PEKIN, ILLINOIS							TITLE CAP AND PLUG ASSEMBLY		