

For Use with Fire Suppression Systems -

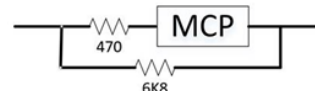
The manual actuation switch (P/N 14053) is used in the detection circuit or connected to manual release where available. The switch is in the normally open position. The switch has a red "FIRE" button that can be pressed to complete the circuit and activate the fire suppression system.

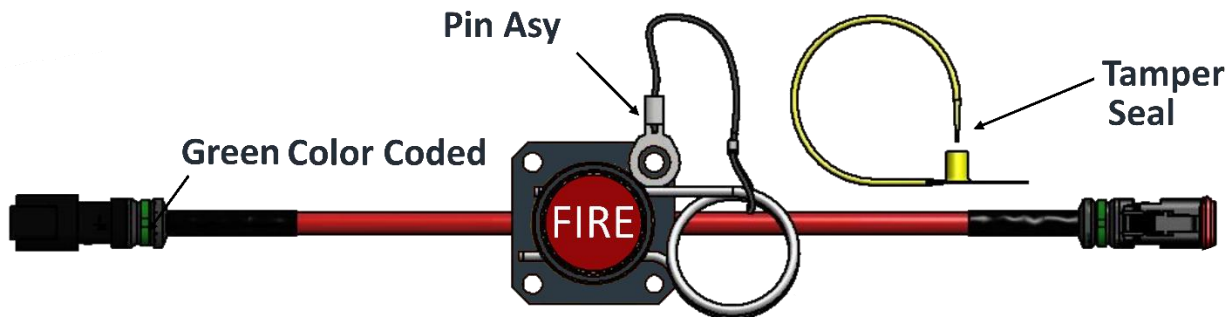
- Suitable for harsh vibration environments, such as vehicles and marine vessels
- Safety pin and anti-tamper tie to prevent accidental discharge.
- Moulded aluminium assembly with water-proof switch IP68 mechanism.
- Stainless Steel (316SS) switch guard for external applications
- Connections via Deutsch Plugs IP68
- Made in the Australia

Specifications	
General	
Ingress Rating	IP68
Contact Rating	50vDC
Contact Configuration	Normally Open
Switch Operation	Momentary Action
Dimensions	L100 x W80 x D64 mm
Switch Mechanism	
Ingress Rating	IP68 (UL E61705)
Current Rating	10A
Mechanical Life	1,000,000 cycles
Connections	Soldered & Potted
Operating Temp	-55°C to +85°C
Deutsch Plugs	
Ingress Rating	IP68
Current Rating	13A
Contacts	Nickle Plated Copper Alloy
Operating Temp	-55°C to 125°C
Fire Rating	UL94
Enclosure	
Switch Housing - Material	Aluminium
External Housing - Material	316 Stainless Steel

Instructions for use with Sigma XT Fire Panel

Sigma Panel requires special configuration with a 470 Ohm Resistor in line and a 6K8 End of Line resistor as shown.





<p>Switch Mechanism</p>	<p>Switch Housing</p>	<p>Connections soldered and potted. Deutsch Plugs & H/Shrink fitted</p>	<p>Switch Enclosure 2.5mm S/Steel</p>

