



Amerex Hand Portable and Wheeled Extinguisher Parts List (Effective 11-01-07)

Visit us online at: www.amerex-fire.com

MAIN OFFICE / MANUFACTURING FACILITIES:

| | <u>Phone</u> | <u>Fax</u> |
|---|----------------|---|
| AMEREX CORPORATION Post Office Box 81 7595 Gadsden Highway East Trussville, AL 35173-0081 | (205) 655-3271 | (800) 654-5980 |
| | | email: sales@amerex-fire.com |

SALES / WAREHOUSES:

| | | |
|--|---|---|
| 1430 Jarvis Avenue Elk Grove Village, IL 60007-2306 | (847) 981-8550 | (800) 628-4790 |
| 29 Dwight Place Fairfield, NJ 07004-3303 | email: amerexchicago@amerex-fire.com (973) 808-0944 | (800) 526-3738 |
| 10540 Pioneer Blvd. Santa Fe Springs, CA 90670-1505 | email: amerexnj@amerex-fire.com (562) 944-0191 | (800) 869-0748 |
| 14101-C Aurora Ave. N Seattle, WA 98133-6942 | email: amerexla@amerex-fire.com (206) 782-2490 | (800) 767-2099 email: amerexseattle@amerex-fire.com |

SALES OFFICES:

| | | |
|--|---|---|
| 521 Waynewood Ct. Auburn, AL 36830-3295 | (334) 501-6207 | (334) 501-6208 |
| 437 Clinton Avenue Akron, OH 44301-3116 | email: eruggles@amerex-fire.com (330) 724-1341 | (330) 724-1341 |
| 10540 Pioneer Blvd. Santa Fe Springs, CA 90670-1505 | email: dvolchko@amerex-fire.com (760) 804-5813 | (760) 804-5805 |
| 3625 Elder Lane Franklin Park, IL 60131-1707 | email: jfleming@amerex-fire.com (847) 678-4588 | (847) 678-4660 |
| 6004 Lakeshore Drive Lago Vista, TX 78645-5243 | email: cmoreth@amerex-fire.com (512) 267-2072 | (512) 267-2026 |
| P.O. Box 604 Indianola, WA 98342-0604 | email: jhund@amerex-fire.com (360) 779-8229 | (360) 779-2636 |
| 1022 Ashley Road West Chester, PA 19382-7546 | email: jhenderson@amerex-fire.com (610) 399-1609 | (610) 399-1473 |
| 292 Newtown Road Wyckoff, NJ 07481-2606 | email: skeefe@amerex-fire.com (201) 612-1596 | (201) 612-1596 email: jmiller@amerex-fire.com |

NOTICE:

Amerex fire extinguishers are manufactured under a quality system consisting of ISO 9001-2000 and to ANSI/UL Standards. They are warranted for six years [twelve years for High Performance models]. To protect the U/L listing and to keep the warranty in effect Amerex replacement parts must be used.

Genuine factory parts are available to insure proper maintenance - use of other manufacturer's parts releases Amerex of its warranty obligations. Amerex parts have machined surfaces and threads which are manufactured to exacting tolerances. O-rings, hoses, nozzles, horns and all metal parts meet precise specifications and are subjected to multiple in-house inspections and tests for acceptability. The Amerex warranty is voided by the use of generic, off-the-shelf or substitute parts. **DO NOT SUBSTITUTE.**

Amerex Corporation does not service, maintain nor recharge fire extinguishers. This Parts Book and the various Amerex extinguisher service manuals are published as a guide to assist qualified personnel in the proper selection of parts and the "Inspection, Maintenance and Recharge" of Amerex extinguishers only. Personnel should receive proper instruction by a qualified agency in the servicing of fire extinguishers prior to servicing extinguishers.

FAILURE TO USE AMEREX REPLACEMENT PARTS OR HEED THE SERVICE MANUAL INSTRUCTIONS COULD CAUSE MALFUNCTION OF THE EXTINGUISHER RESULTING IN SERIOUS INJURY.



"We make your needs today's priority"

TABLE OF CONTENTS

| TYPE EXTINGUISHER | PAGE NUMBER |
|---|--------------------|
| DRY CHEMICAL - 1, 2½, 5 LB. (Fixed Nozzle - Aluminum Valve) | 2 |
| DRY CHEMICAL - 5, 5½, 6, 10, 20 LB. (Hose & Horn - Aluminum Valve) | 3 |
| DRY CHEMICAL - 5, 6, 10, 20, 30 LB. (Hose & Horn - Brass Valve) | 4 |
| WATER MIST - 2½ GAL. AND 1¾ GAL. (Hose & Wand - Brass Valve) | 5 |
| WET CHEMICAL (Class K) 2½ GAL. AND 6 LITER (Hose & Wand / Nozzle - Brass Valve) | 6 |
| WATER - 2½ GAL. ; FOAM - 6 LITER AND 2½ GAL. AFFF, 2½ GAL. FFFP (Hose & Nozzle - Brass Valve) | 7 |
| <i>HIGH PERFORMANCE</i> DRY CHEMICAL- 6 KG., 20, 30 LB. (Hose & Horn- Brass Valve) “NEW” | 8 |
| HALON 1211 - 1¼, 2½, 5 LB. (Fixed Nozzle), 3 LB. (Hose & Horn - Aluminum Valve) | 9 |
| HALON 1211 - 9, 13, 17, 20 LB. (Hose & Horn - Brass Valve) | 9 |
| HALOTRON I - 1.4, 2½, 5, LB. (Fixed Nozzle - Aluminum Valve) | 10 |
| HALOTRON I - 11, 15½ LB. (Hose & Horn - Brass Valve) | 10 |
| CARBON DIOXIDE - 5 LB. | 11 |
| CARBON DIOXIDE - 10, 15, 20 LB. | 12 |
| CLASS D - 30 LB. SUPER D (Sodium Chloride), 30 LB. COPPER | 13 |
| DRY CHEMICAL - Wheeled - Stored Pressure - 50 LB. ABC, REGULAR & PURPLE K | 14 |
| DRY CHEMICAL - Wheeled - Stored Pressure - 125 LB. ABC & PURPLE K, 150 LB. REGULAR | 15 |
| DRY CHEMICAL - Wheeled - N ₂ Cylinder Operated - 110 FT ³ - 125 LB. ABC & PK, 150 LB. REGULAR | 16 |
| DRY CHEMICAL - Wheeled - N ₂ Cylinder Operated - 23 FT ³ - 125 LB. ABC & PK, 150 LB. REGULAR | 17 |
| DRY CHEMICAL - Wheeled - N ₂ Cylinder Operated - 55 FT ³ - 300 LB. ABC & PK, 350 LB. REGULAR | 18 |
| <i>HIGH PERFORMANCE</i> DRY CHEMICAL - Wheeled - 250 LB. ABC, REGULAR, PURPLE-K | 19 |
| FOAM (FFFP) - Wheeled - N ₂ Cylinder Operated - 23 FT ³ - 33 GAL. | 20 |
| CARBON DIOXIDE - Wheeled - 50 & 100 LB. | 21 |
| HALON 1211 - Wheeled - 50 & 150 LB. | 22 |
| CLASS D - Wheeled - 150 LB. SUPER D (Sodium Chloride), 250 LB. COPPER | 23 |
| HALOTRON I - Wheeled - 65 lb. | 24 |
| HALOTRON I - Wheeled - 150 lb. | 25 |
| WALL BRACKETS and MISCELLANEOUS ITEMS | 26 |
| VEHICLE and VEHICLE / MARINE BRACKET COMPONENTS | 27 |
| ADAPTERS - FILL (Recharge) and HYDROTEST | 28 |
| AMEREX SERVICE / MAINTENANCE MANUALS and MSDS Availability | 29 |
| AMEREX VIDEOS | 30 |

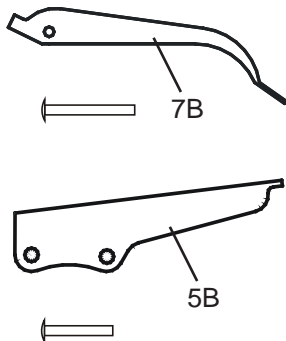
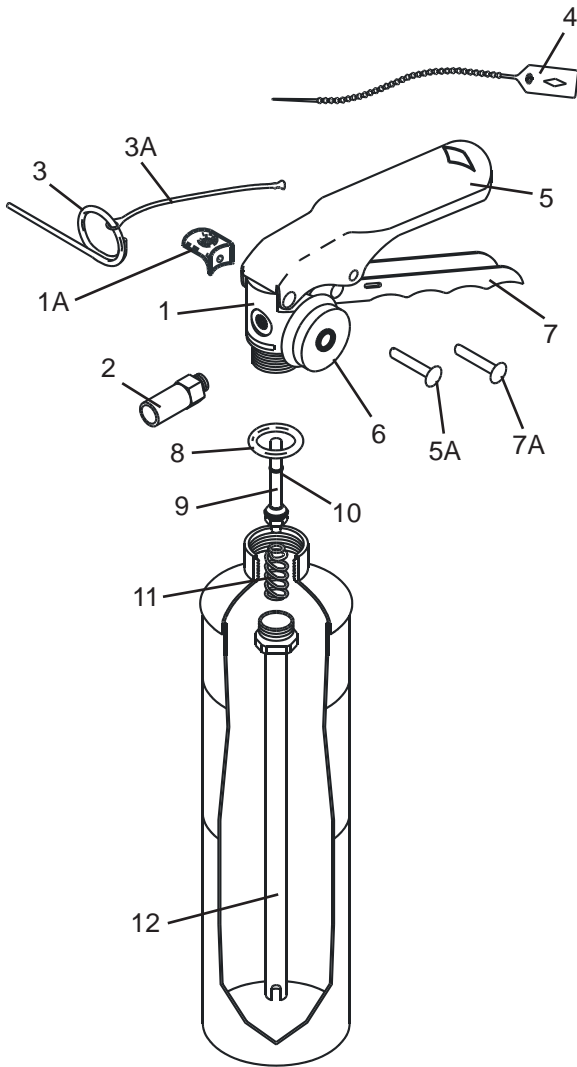
PARTS LIST

for

1 - 5 lb. Dry Chemical (Fixed Nozzle)

Aluminum Valve Models

| | | |
|--------|----------|--------|
| A620 | A/B/C403 | 416 |
| A/B459 | A/B410 | A/B416 |
| 417 | 425 | |
| A/B417 | 409 | |
| | A/B409 | |



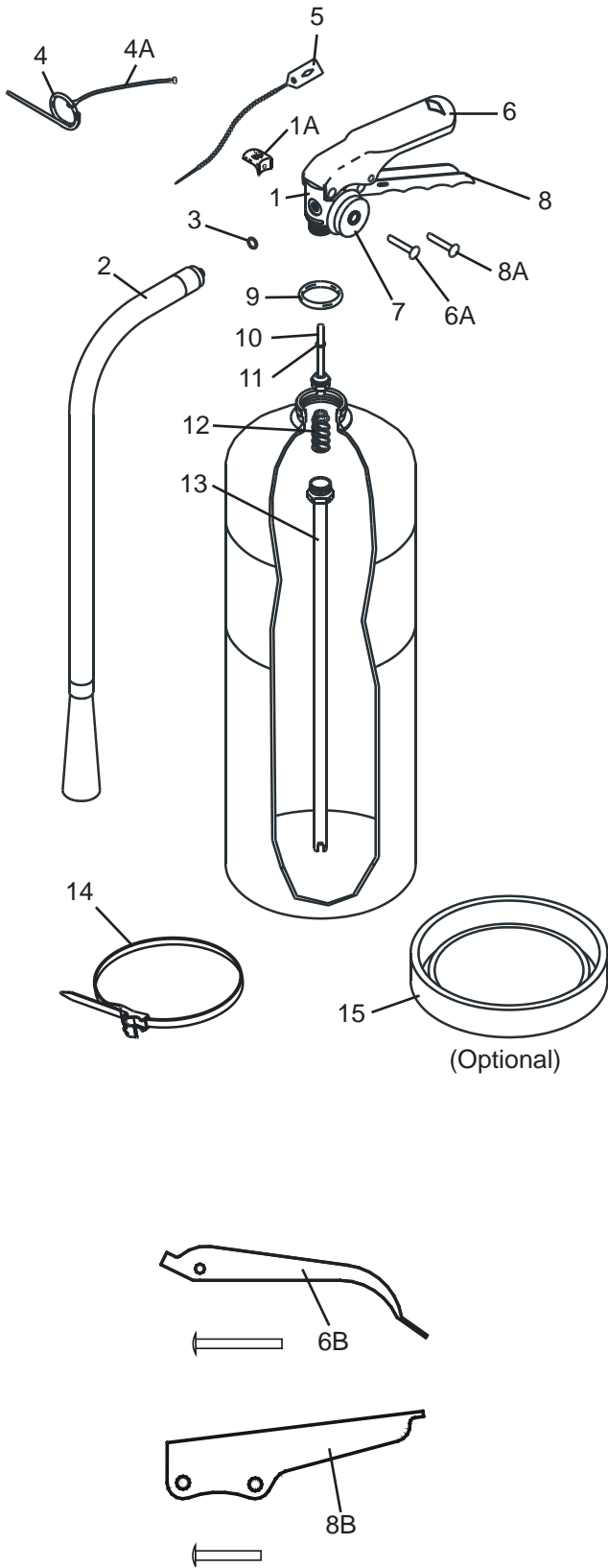
| ITEM NO. | PART NO. | DESCRIPTION | STD. PKG. |
|--|----------|--|-----------|
| 1 | 12699 | Valve Assembly - A620T | 1 |
| | 11823 | ALL OTHER MODELS | 1 |
| 1A | 14220 | Hanger Loop w/Screw (OPTIONAL) | 6 |
| 2 | 12494 | Nozzle - A620T (.076 SHORT) | 6 |
| | 1926 | 417-417T, A/B417-A/B417T (.129) | |
| | 3741 | 409T, 416T, A/B409T, A/B416T (.173P) | |
| | 3211 | 403T, A/B403T (.120ST) | |
| | 1276 | 410T, A/B410T (.120) | |
| | 1253 | 425-425T (.166) | |
| | 3353 | 459 (.144) | |
| 3 | 1412 | Ring Pin | 24 |
| | 16353 | Ring Pin 1 lb. & 2 1/5 lb. | 24 |
| 3A | 0532 | Chain (Nylon) for Ring Pin | 24 |
| 4 | 1387 | Lock Wire Seal (Yellow) | 500 |
| 5 | 11825 | Lever & Rivet "A/B" Valve | 1 |
| 5A | 1060 | Rivet Only for Lever Old & A/B Valve | 24 |
| 5B | 6067 | Lever & Rivet - A620T | 1 |
| | 2625 | Lever & Rivet - FORGED VALVE | 1 |
| 6 | 8184 | Gauge - 100 PSI for A620T | 6 |
| | 3103 | Gauge - 195 PSI | 6 |
| 7 | 11826 | Handle & Rivet "A/B" Valve | 1 |
| 7A | 1064 | Rivet Only for Handle - ALL VALVES | 24 |
| 7B | 9001 | Handle & Rivet - A620T | 1 |
| | 9002 | Handle & Rivet - 2½ & 5 lb. - Forged Valve | 1 |
| | 9003 | Handle & Rivet - 6 lb. Forged Valve | 1 |
| 8 | 5241 | Collar O-Ring | 24 |
| | | Collar O-Ring - Bulk Bag | 100 |
| 9 | 6092 | Valve Stem Assembly | 6 |
| | | Valve Stem Assembly - Bulk Bag | 96 |
| 10 | 5235 | Valve Stem O-Ring | 24 |
| 11 | 1074 | Spring | 6 |
| 12 | 6069 | Downtube/Retainer Assembly - A620T | 1 |
| | 1075 | 417-417T, C403T, 403T, 410T, A417-A417T, A403T, A410T | 1 |
| | 6212 | 409T, 425-425T, 416T, A/B409T, B403T, B410T, B417-B417T, A/B416T | 1 |
| | 3397 | 459 | 1 |
| ALL BRACKETS - SEE BRACKET PAGE | | | |
| ALL FILL & HYDROTEST ADAPTERS - SEE ADAPTERS PAGE | | | |
| All Valve Assemblies include Valve Body, Gauge, Lever and Handle | | | |

PARTS LIST

for

5 - 20 lb. Dry Chemical (Hose & Horn)

Aluminum Valve Models



| | | | |
|--------|--------|--------|--------|
| 400 | 500 | 479 | A/B457 |
| A/B400 | A/B500 | A/B479 | A411 |
| A/B402 | 453 | 443 | A412 |
| | A/B453 | A/B443 | A413 |
| | | 456 | |
| | | B456 | |

| ITEM NO. | PART NO. | DESCRIPTION | STD. PKG. |
|----------|-------------------|--|-----------|
| 1 | 11823 | Valve Assembly - 5, 5½, 6 & 10 LB. | 1 |
| | 11824 | 20 LB. | 1 |
| 1A | 14220 | Hanger Loop with Screw (OPTIONAL) | 6 |
| 2 | 7641 | Hose & Horn Ass'y - 400(T), A400(T) (.149) | 1 |
| | 14849 | A/B402(T) (.157) | |
| | 6215 | 453, A/B453, A/B500(T) (.147) | |
| | 5248 | 479T, 500(T), 443, A/B479T, A/B443 (.152) | |
| | 5564 | 456, A/B456, A/B457 (.191) | 1 |
| | 11221 | A411 (.209) | 1 |
| 11223 | A412, A413 (.177) | 1 | |
| 3 | 1532 | Hose Gasket (O-Ring) - ALL 5, 6, & 10 lb. | 24 |
| | 6978 | A411, A412, A413 | 24 |
| 4 | 1412 | Ring Pin | 24 |
| 4A | 0532 | Chain (Nylon) for Ring Pin | 24 |
| 5 | 1387 | Lock Wire Seal (Yellow) | 500 |
| 6 | 11825 | Lever & Rivet - A400(T), A/B402(T), A/B453 A/B479T, A/B500(T), A/B443, A/B456 A/B457, A411, A412, A413 | 1 |
| 6A | 1060 | Rivet Only for Lever - Old & "A" Valve | 24 |
| 6B | 2625 | Lever & Rivet - 400(T), 453, 479T, 443, 456 | 1 |
| 7 | 3103 | Gauge - 195 PSI | 6 |
| 8 | 11826 | Handle & Rivet - A400(T), A/B402(T), A/B453 A/B479T, A/B500(T), A/B443, A/B456, A/B457 | 1 |
| | 12405 | A411, A412, A413 | 1 |
| 8A | 1064 | Rivet Only for Handle - ALL 5 - 10 lb. | 24 |
| | 12201 | A411, A412, A413 | |
| 8B | 9002 | Handle & Rivet - 453, 479T, 500(T) | 1 |
| | 9003 | 400(T), 443, 456 | |
| 9 | 5241 | Collar O-Ring | 24 |
| | | Collar O-Ring - Bulk Bag | 100 |
| 10 | 6092 | Valve Stem Assembly | 6 |
| | | Valve Stem Assembly - Bulk Bag | 96 |
| 11 | 5235 | Valve Stem O-Ring | 24 |
| 12 | 1074 | Spring | 6 |
| 13 | 6212 | Downtube/Retainer Ass'y - A/B402(T), 453, 479T, 500(T), A/B453, A/B479T, A/B500(T) | 1 |
| | 3397 | 400(T), 443, A400(T), A/B443 | |
| | 1519 | 456, A/B456, A/B457 | |
| | 11674 | A411, A412, A413 | |
| 14 | 15747 | Strap & Clip Ass'y (Black Plastic - 3/8" Hose) ALL 5 - 10 lb. | 1 |
| | 14778 | Strap & Clip Ass'y (Black Plastic - 1/2" Hose) ALL 20 lb. | |
| 15 | 12383 | Protective Ring for Bottom of Cylinder - 7" | 1 |

ALL BRACKETS - SEE BRACKET PAGE

ALL FILL & HYDROTEST ADAPTERS - SEE ADAPTERS PAGE

All Valve Assemblies include Valve Body, Gauge, Lever and Handle

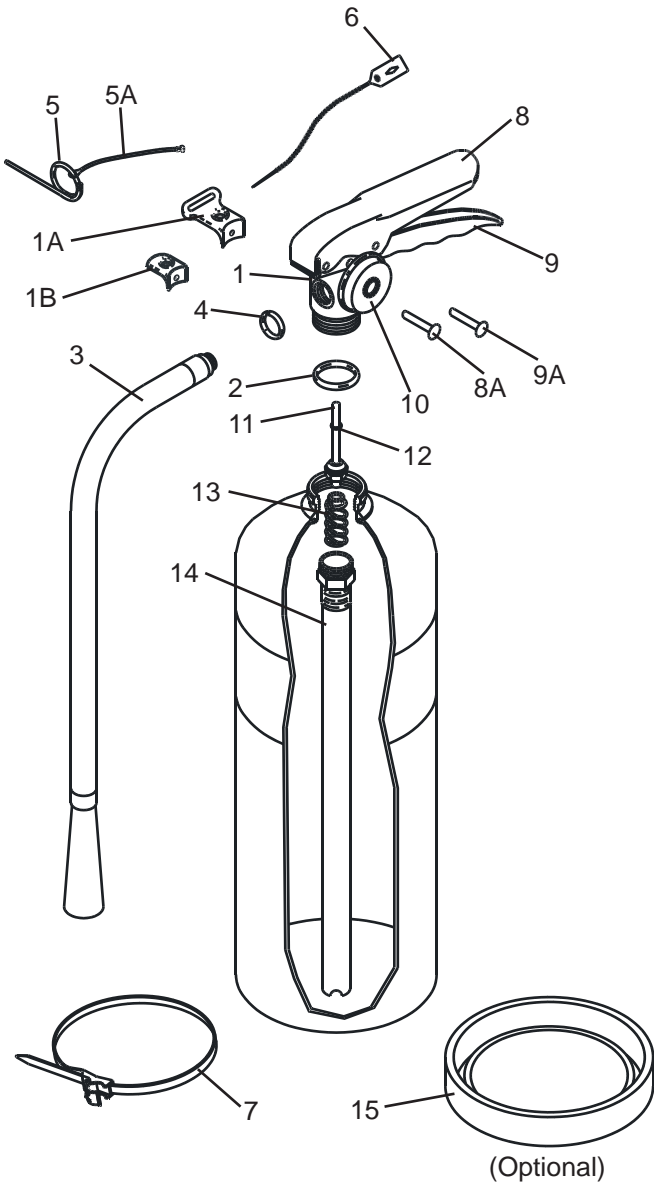
P/N: 5248 & 6215 Hose & Horn Ass'y are both valid for use on
Models 500 & 500T

PARTS LIST

for

5 - 30 lb. Dry Chemical Brass Valve Models

| | | | |
|------|------|------|-----|
| 424 | 419 | 460 | 692 |
| B424 | 441 | B460 | 693 |
| 461 | B441 | 423 | |
| B461 | 447 | 408 | |
| 462 | B447 | 415 | |
| B462 | | | |

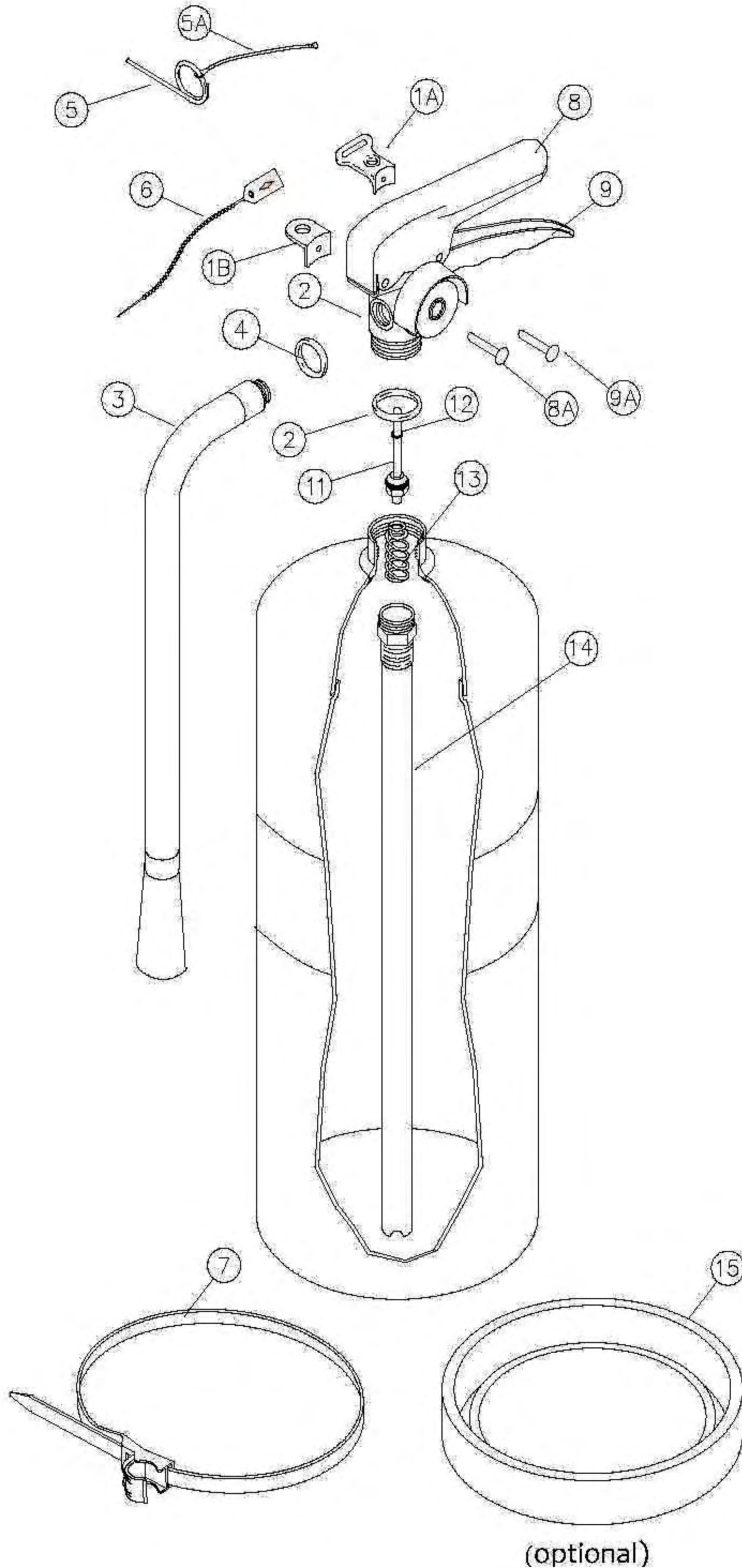


| ITEM NO. | PART NO. | DESCRIPTION | STD. PKG. |
|--|----------|---|-----------|
| 1 | 11952 | Valve Assembly - ALL MODELS | 1 |
| 1A | 15363 | Hanger Loop with Screw - "B" Models B441, B447, B460 (10 lb.) | 6 |
| 1B | 16694 | Hanger Loop with Screw 5 lb., 6 lb., & 20 lb. | 6 |
| 2 | 5240 | Collar O-Ring | 24 |
| | | Collar O-Ring - Bulk Bag | 100 |
| 3 | 3753 | Hose & Horn Ass'y - 424, B424 (.140) | 1 |
| | 1178 | 441, 447-B447 (.173) | |
| | 3753 | 461-B461, 462-B462 (.140) | |
| | 6095 | 419, 460-B460, B441, (.152) | |
| | 3339 | 423 (.174) | |
| | 5174 | 415 (.177) | 1 |
| | 3332 | 408 (.173) | |
| | 12603 | 692 (.216) | 1 |
| | 13439 | 693 (.191) | 1 |
| 4 | 6978 | Hose Gasket (O-Ring) | 24 |
| 5 | 0160 | Ring Pin, Stainless Steel | 24 |
| 5A | 0532 | Chain (Nylon) for Ring Pin | 24 |
| 6 | 1387 | Lock Wire Seal (Yellow) | 500 |
| 7 | 15747 | Strap & Hose Clip Ass'y (Black Plastic) 3/8" ALL 4 1/4 & 5" Diameter Cylinders | 1 |
| | 14778 | Strap & Hose Clip Ass'y (Black Plastic) 1/2" ALL 7" Diameter Cylinders | 1 |
| | 14871 | Strap & Hose Clip Ass'y (Black Plastic) 1/2" ALL 8" Diameter Cylinders | 1 |
| 8 | 7762 | Lever & Rivet - ALL MODELS | 1 |
| 8A | 1563 | Rivet Only for Lever | 24 |
| 9 | 9020 | Handle & Rivets - ALL MODELS | 1 |
| 9A | 1564 | Rivets Only for Handle (2 Required) | 24 |
| 10 | 3965 | Gauge - 195 PSI | 6 |
| 11 | 5243 | Valve Stem O-Ring | 24 |
| 12 | 6093 | Valve Stem Assembly | 6 |
| | | Valve Stem Assembly - Bulk Bag | 96 |
| 13 | 0383 | Spring | 6 |
| 14 | 1696 | Downtube/Retainer Ass'y - 424-B424 | |
| | 1700 | 419 | |
| | 3754 | 461-B461, 462-B462 | 1 |
| | 2609 | 441-B441, 447-B447, 460-B460 | |
| | 1667 | 408, 415, 423 | |
| | 9583 | 692, 693 | |
| 15 | 12383 | Protective Ring for Bottom of Cylinder - 7" | 1 |
| | 12952 | Protective Ring for Bottom of Cylinder - 8" | 1 |
| ALL BRACKETS - SEE BRACKET PAGE | | | |
| ALL FILL & HYDROTEST ADAPTERS - SEE ADAPTERS PAGE | | | |
| All Valve Assemblies include Valve Body, Gauge, Lever and Handle | | | |



PARTS LIST
for
15 lb. Dry Chemical

Brass Valve Model 668



| Item No. | Part No. | Description | Std. Pkg. |
|--|----------|---|-----------|
| 1 | 11952 | Valve Assembly – All models | 1 |
| 1A | 15363 | Hanger Loop w/Screw – "B" Models B441, B447, B460 – 10 lb. | 1 |
| 1B | 16694 | Hanger Loop w/Screw – 5 lb., 6 lb., & 20 lb. | |
| 2 | 05240 | Collar O-Ring | 24 |
| | | Collar O-Ring – Bulk Bag | 100 |
| 3 | 15922 | Hose & Horn Asy– 668 | 1 |
| 4 | 06978 | Hose Gasket (O-Ring) | 24 |
| 5 | 00160 | Ring Pin, Stainless Steel | 24 |
| 5A | 00532 | Chain (Nylon) for Ring Pin | 24 |
| 6 | 01387 | Lockwire Seal (Yellow) | 500 |
| 7 | 14778 | Strap & Hose Clip Asy (Black Plastic) 1/2" All 7" Dia Cylinders | 1 |
| 8 | 07762 | Lever & Rivet – All Models | 1 |
| 8A | 01563 | Rivet Only for Lever | 24 |
| 9 | 09020 | Handle & Rivets – All Models | 1 |
| 9A | 01564 | Rivets Only for Handle (2 Req'd) | 24 |
| 10 | 03965 | Gauge – 195 PSI | 6 |
| 11 | 05243 | Valve Stem O-Ring | 24 |
| 12 | 06093 | Valve Stem Assembly | 6 |
| | | Valve Stem Assembly – Bulk Bag | 96 |
| 13 | 00383 | Spring | 6 |
| 14 | 12383 | Protective Ring for Bottom of Cyl 7" | 1 |
| | | Protective Ring for Bottom of Cyl 7" | 1 |
| ALL BRACKETS – SEE BRACKET PAGE | | | |
| ALL FILL & HYDRATEST ADAPTERS – SEE ADAPTER PAGE | | | |
| ALL VALVE ASSEMBLIES INCLUDE VALVE BODY, GAUGE, LEVER & HANDLE | | | |

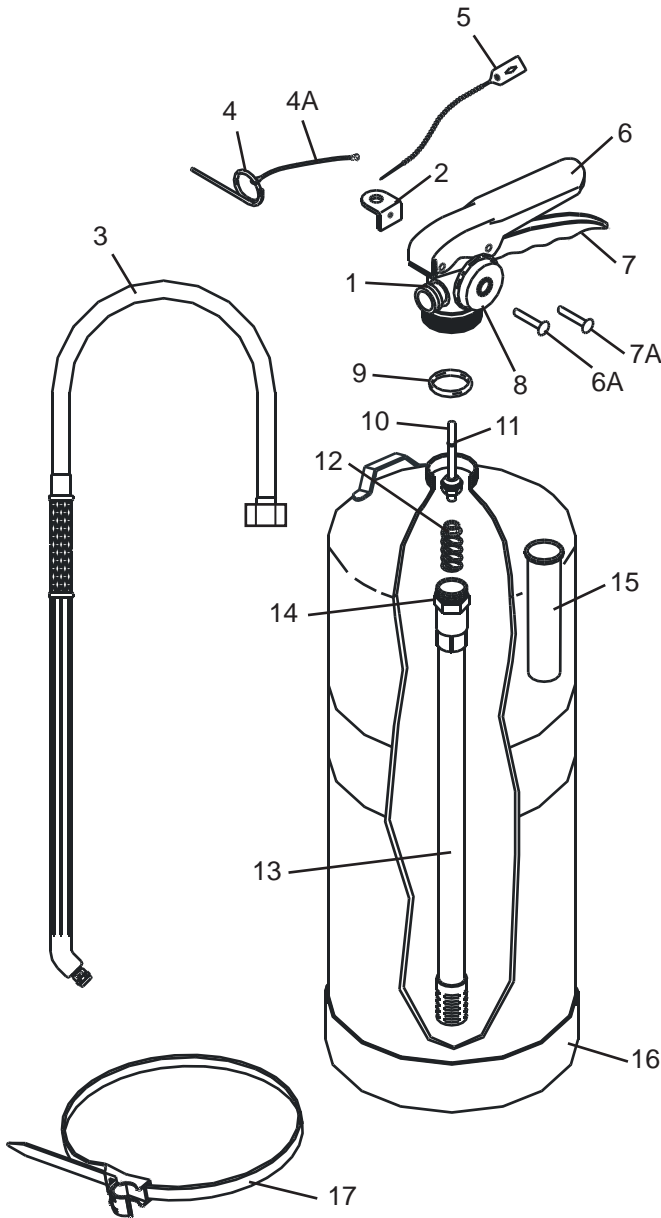
PARTS LIST for 1¾ - 2½ Gal. Water Mist Extinguisher Models

270

272

B270NM (Non-Magnetic)

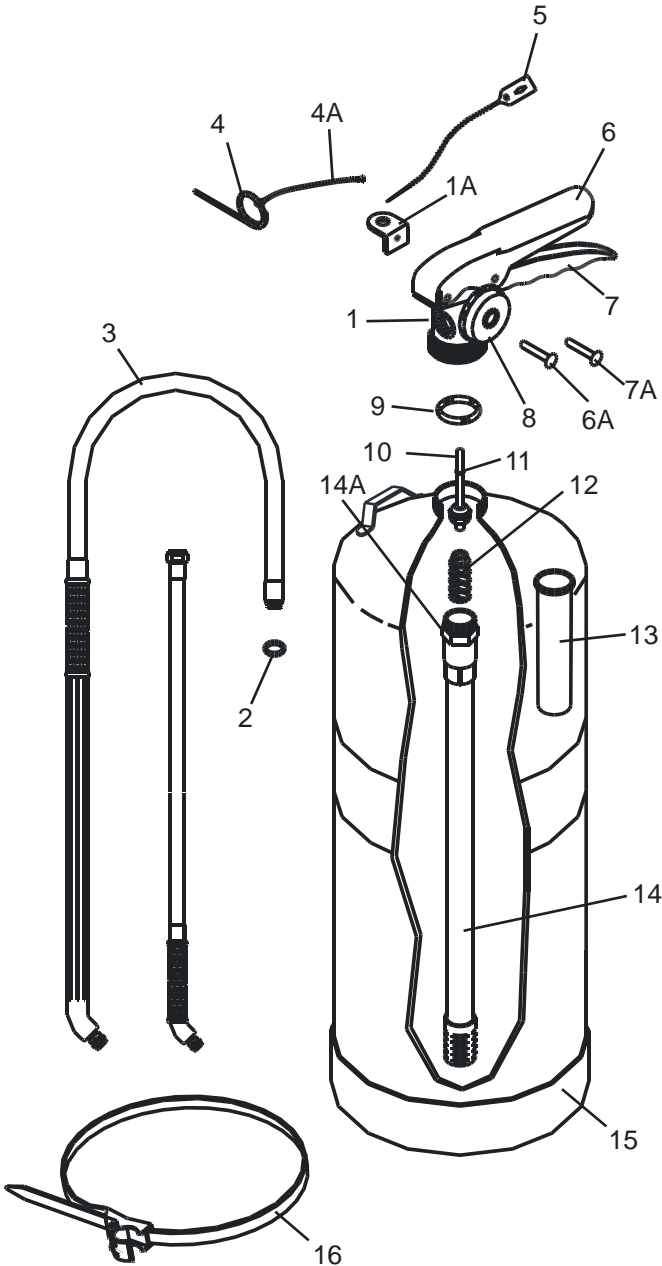
B272NM (Non-Magnetic)



| ITEM NO. | PART NO. | DESCRIPTION | STD. PKG. |
|---|----------|--|-----------|
| 1 | 17615 | Valve Assembly - ALL MODELS | 1 |
| 2 | 14380 | Hanger Loop with Screw (Optional) | 6 |
| 3 | 14184 | Hose & Wand Assembly - 272, B272, B272NM | 1 |
| | 14318 | Hose & Wand Assembly - 270, B270, B270NM | |
| 4 | 6901 | Ring Pin, Stainless Steel (Non-Magnetic) | 24 |
| 4A | 0532 | Chain (Nylon) for Ring Pin | 24 |
| 5 | 1387 | Lock Wire Seal (Yellow) | 500 |
| 6 | 7762 | Lever & Rivet - ALL MODELS | 1 |
| 6A | 1563 | Rivet Only for Lever | 24 |
| 7 | 9020 | Handle & Rivets - ALL MODELS | 1 |
| 7A | 1564 | Rivets Only for Handle (2 Required) | 24 |
| 8 | 6479 | Gauge - 100 PSI (S/S Tube) | 6 |
| 9 | 5240 | Collar O-Ring | 24 |
| | | Collar O-Ring - Bulk Bag | 100 |
| 10 | 6093 | Valve Stem Assembly | 6 |
| | | Valve Stem Assembly - Bulk Bag | 96 |
| 11 | 5243 | Valve Stem O-Ring | 24 |
| 12 | 0383 | Spring | 6 |
| 13 | 15943 | Downtube/Retainer Ass'y - 272, B272, B272NM | 1 |
| | 15941 | Downtube/Retainer Ass'y - 270, B270, B270NM | |
| 14 | 5690 | O-Ring Downtube / Retainer | 12 |
| 15 | 2595 | Fill Tube 272, B272, B272NM | 1 |
| | 14316 | Fill Tube 270, B270, B270NM | |
| 16 | 14187 | Foot Stand (Blue) | 1 |
| 17 | 14838 | Strap & Clip Ass'y [Blue Plastic - 3/8"] (2 Required) | 1 |
| ALL BRACKETS - SEE BRACKET PAGE | | | |
| ALL FILL & HYDROTEST ADAPTERS - SEE ADAPTERS PAGE | | | |
| All Valve Assemblies include Valve Body, Gauge, Collar Nut, O-Ring, Lever and Handle | | | |

PARTS LIST for 6 Liter and 2½ Gal. Wet Chemical Models

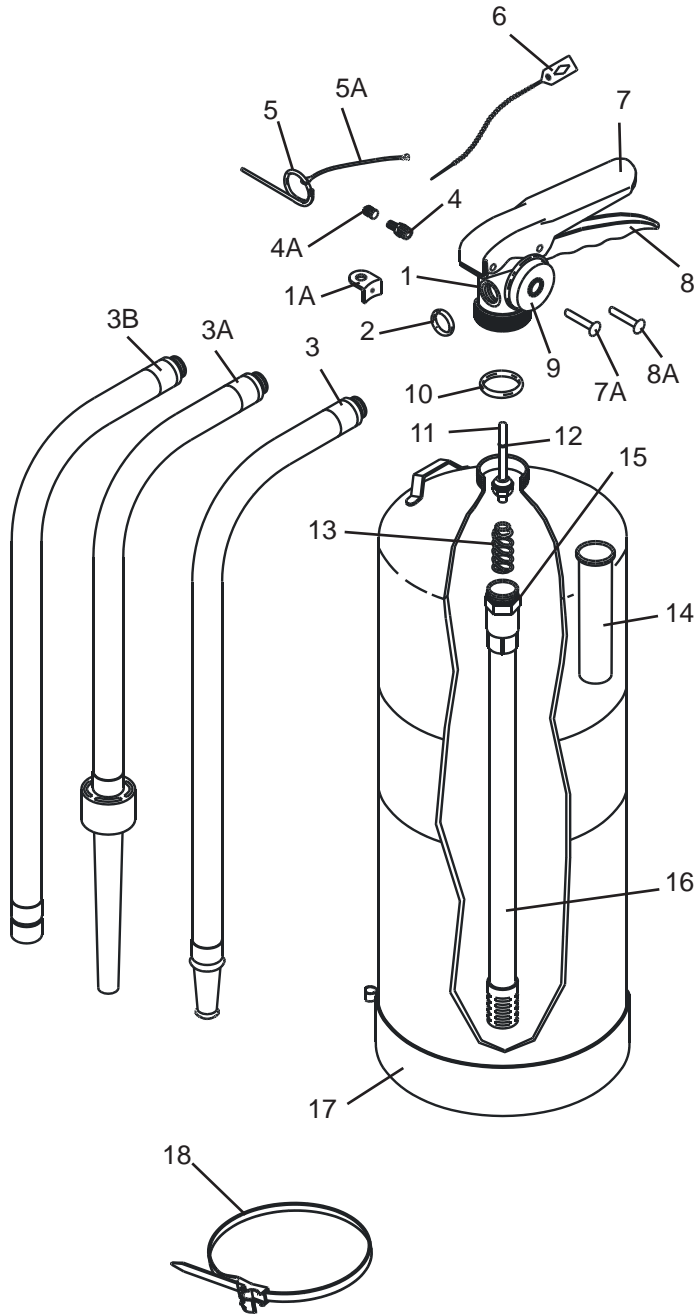
260
B260
262
B262



| ITEM NO. | PART NO. | DESCRIPTION | STD. PKG. |
|--|----------|---|-----------|
| 1 | 14345 | Valve Assembly - 260, 262 | 1 |
| | 14249 | Valve Assembly - B260, B262 | 1 |
| 1A | 14380 | Hanger Loop with Screw (OPTIONAL) | 6 |
| 2 | 6978 | Hose Gasket (O-Ring) | 24 |
| 3 | 14588 | Hose & Wand Assembly - 260, 262 | 1 |
| 3A | 16043 | Hose & Nozzle Assembly - B260 | 1 |
| | 16101 | Hose & Nozzle Assembly - B262 | |
| 4 | 0160 | Ring Pin, Stainless Steel | 24 |
| 4A | 0532 | Chain (Nylon) for Ring Pin | 24 |
| 5 | 1387 | Lock Wire Seal (Yellow) | 500 |
| 6 | 7762 | Lever & Rivet - ALL MODELS | 1 |
| 6A | 1563 | Rivet Only for Lever | 24 |
| 7 | 9020 | Handle & Rivets - ALL MODELS | 1 |
| 7A | 1564 | Rivets Only for Handle (2 Required) | 24 |
| 8 | 17420 | Gauge - 100 PSI (S/S Tube) | 6 |
| 9 | 5240 | Collar O-Ring | 24 |
| | | Collar O-Ring - Bulk Bag | 100 |
| 10 | 14878 | Valve Stem Assembly | 6 |
| | | Valve Stem Assembly - Bulk Bag | 96 |
| 11 | 5243 | Valve Stem O-Ring | 24 |
| 12 | 0383 | Spring | 6 |
| 13 | 2595 | Fill Tube | 1 |
| 14 | 16266 | Downtube/Retainer Ass'y - 260, B260 | 1 |
| | 16267 | Downtube/Retainer Ass'y - 262, B262 | |
| 14A | 5690 | O-Ring Downtube / Retainer | 12 |
| 15 | 3109 | Foot Stand (Black) | 1 |
| 16 | 14776 | Strap & Clip Ass'y [Black Plastic - 3/8"] | 1 |
| * | 4488 | Adhesive (3 oz. tube for Footstand) | 1 |
| * | 14669 | Placard | 1 |
| ALL BRACKETS - SEE BRACKET PAGE | | | |
| ALL FILL & HYDROTEST ADAPTERS - SEE ADAPTERS PAGE | | | |
| All Valve Assemblies include Valve Body, Gauge, Collar Nut, O-Ring, Lever and Handle | | | |
| * Not Shown | | | |

PARTS LIST for 6 Liter and 2½ Gal. Water & Foam Models

240
250
252
254



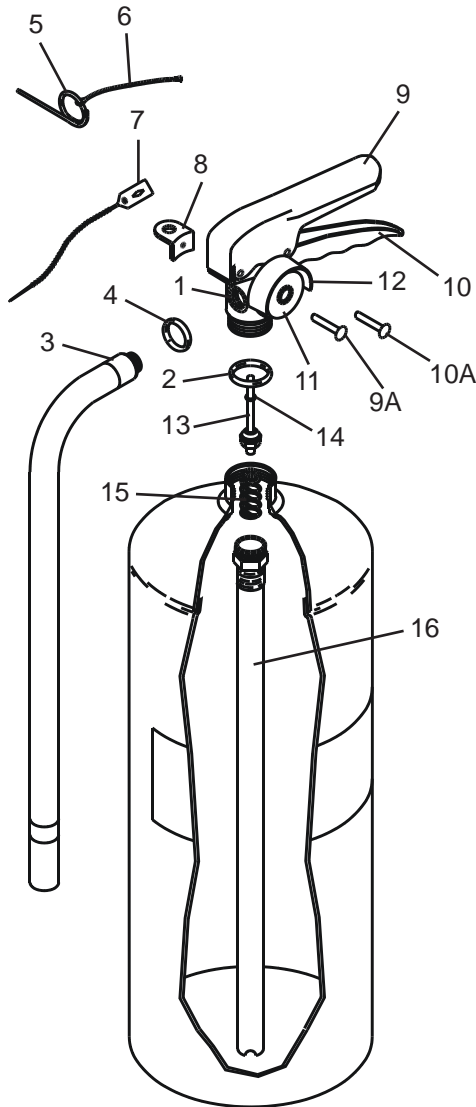
| ITEM NO. | PART NO. | DESCRIPTION | STD. PKG. |
|--|----------|---|-----------|
| 1 | 13281 | Valve Assembly - 240 | 1 |
| | 17616 | Valve Assembly - 250, 252, 254 | 1 |
| 1A | 14380 | Hanger Loop with Screw (OPTIONAL) | 6 |
| 2 | 6978 | Hose Gasket (O-Ring) | 24 |
| 3 | 6999 | Hose & Nozzle Assembly - 240 | 1 |
| 3A | 7000 | Hose & Aspirated Nozzle Assembly - 250 | 1 |
| | 6982 | Hose & Aspirated Nozzle Assembly - 252 | |
| 3B | 13162 | Hose & Spray Nozzle Assembly - 254 | 1 |
| 4 | 0155 | Pressure Valve & Cap Assembly - 240 Only | 12 |
| 4A | 0158 | Cap Only for Pressure Valve - 240 Only | 12 |
| 5 | 0160 | Ring, Pin Stainless Steel | 24 |
| 5A | 0532 | Chain (Nylon) for Ring Pin | 24 |
| 6 | 1387 | Lock Wire Seal (Yellow) | 500 |
| 7 | 7762 | Lever & Rivet - ALL MODELS | 1 |
| 7A | 1563 | Rivet Only for Lever | 24 |
| 8 | 9020 | Handle & Rivets - ALL MODELS | 1 |
| 8A | 1564 | Rivets Only for Handle (2 Required) | 24 |
| 9 | 6479 | Gauge - 100 PSI (S/S Tube) | 6 |
| 10 | 5240 | Collar O-Ring | 24 |
| | | Collar O-Ring - Bulk Bag | 100 |
| 11 | 6093 | Valve Stem Assembly | 6 |
| | | Valve Stem Assembly - Bulk Bag | 96 |
| 12 | 5243 | Valve Stem O-Ring | 24 |
| 13 | 0383 | Spring | 6 |
| 14 | 2595 | Fill Tube | 1 |
| 15 | 5690 | O-Ring Downtube / Retainer | 12 |
| 16 | 15943 | Downtube/Retainer Ass'y - 240 | 1 |
| | 15941 | Downtube/Retainer Ass'y - 254 | |
| | 15943 | Downtube/Retainer Ass'y - 250, 252 | |
| 17 | 2520 | Foot Stand with Clip (Black) - 240 | 1 |
| | 3776 | Foot Stand with Post (Black) - 250, 252 | |
| | 3109 | Foot Stand (Black) - 254 | |
| 18 | 14776 | Strap & Clip Assembly (Model 254 Only) | 1 |
| * | | Model 506 Loaded Stream/Anti-Freeze Charge - Model 240 Only | 1 |
| | | Model 502 8 oz. AFFF Premix Charge Model 250 & 254 | 12 |
| | | Model 504 1.14 Liter FFFP Premix Charge Model 252 | 12 |
| | | Model 507 Corrosion Inhibitor - Model 240 | 12 |
| ALL BRACKETS - SEE BRACKET PAGE | | | |
| ALL FILL & HYDROTEST ADAPTERS - SEE ADAPTERS PAGE | | | |
| All Valve Assemblies include Valve Body, Gauge, Collar Nut, O-Ring, Lever and Handle | | | |
| * Not Shown | | | |

PARTS LIST

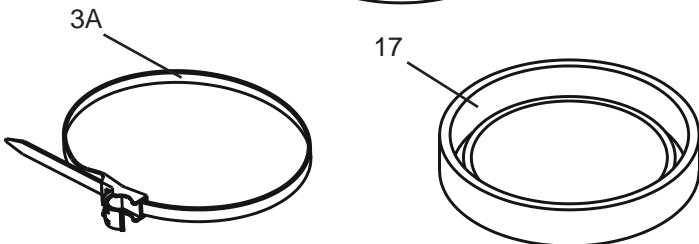
for

6 Kg - 30 lb. Dry Chemical High Performance Models

| | | |
|-----|-----|-----|
| 594 | 567 | 589 |
| 595 | 569 | 591 |
| 581 | 568 | 592 |
| 580 | 599 | |
| 584 | 564 | |
| 582 | 566 | |



| ITEM NO. | PART NO. | DESCRIPTION | STD. PKG. |
|--|----------|---|-----------|
| 1 | 14874 | Valve Assembly - (Female Thread) | 1 |
| 2 | 5240 | Collar O-Ring | 24 |
| | | Collar O-Ring - Bulk Bag | 100 |
| 3* | 14785 | Hose & Horn Assembly - 594 (.213) | 1 |
| | 14791 | Hose & Horn Assembly - 595 (.204) | 1 |
| | 14788 | Hose & Horn Assembly - 580, 581, 582 (.250) | 1 |
| | 14790 | Hose & Horn Assembly - 592 (.166) | 1 |
| | 14794 | Hose & Horn Assembly - 599 (.149) | 1 |
| | 14787 | Hose & Horn Assembly - 564 (.166) | 1 |
| | 14786 | Hose & Horn Assembly - 566 (.157) | 1 |
| | 14789 | Hose & Horn Assembly - 567, 568, 569, 584 (.312) | 1 |
| | 14947 | Hose & Horn Assembly - 589 (.213) | 1 |
| | 14948 | Hose & Horn Assembly - 591 (.180) | 1 |
| 3A | 14778 | Strap & Clip Assembly (Black Plastic) 1/2" Hose 6kg (13.2 lb.) & 20 lb. | 1 |
| | 14871 | Strap & Clip Assembly (Black Plastic) 1/2" Hose 30 lb. | 1 |
| 4 | 6978 | Hose Gasket (O-Ring) | 24 |
| 5 | 0160 | Ring, Pin Stainless Steel | 24 |
| 6 | 0532 | Chain (Nylon) for Ring Pin | 24 |
| 7 | 1387 | Lock Wire Seal (Yellow) | 500 |
| 8 | 9584 | Hanger Loop with Screw | 6 |
| 9 | 9840 | Lever & Rivet - ALL MODELS | 1 |
| 9A | 1563 | Rivet Only for Lever | 24 |
| 10 | 9020 | Handle & Rivets - ALL MODELS | 1 |
| 10A | 1564 | Rivets Only for Handle (2 Required) | 24 |
| 11 | 5225 | Gauge - 240 PSI | 6 |
| 12 | 9102 | Gauge Guard, Chrome Plated Brass | 1 |
| 13 | 6093 | Valve Stem Assembly | 6 |
| | | Valve Stem Assembly - Bulk Bag | 96 |
| 14 | 5243 | Valve Stem O-Ring | 24 |
| 15 | 0383 | Spring | 6 |
| 16 | 1700 | Downtube/Retainer Ass'y - 6kg (13.2 lb.) | 1 |
| | 1667 | Downtube/Retainer Ass'y - 20 lb. | 1 |
| | 9583 | Downtube/Retainer Ass'y - 30 lb. | 1 |
| 17 | 12383 | Protective Foot Ring for Bottom of Cylinder 7" | 1 |
| | 12952 | Protective Foot Ring for Bottom of Cylinder 8" | 1 |
| ALL BRACKETS - SEE BRACKET PAGE | | | |
| ALL FILL & HYDROTEST ADAPTERS - SEE ADAPTERS PAGE | | | |
| All Valve Assemblies include Valve Body, Gauge, Gauge Guard, Hanger Loop, Lever and Handle | | | |



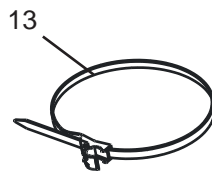
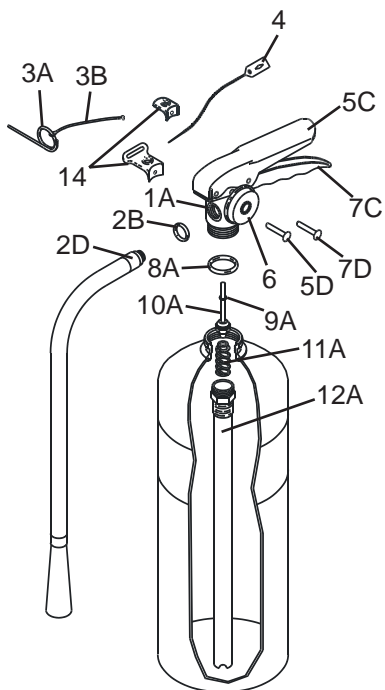
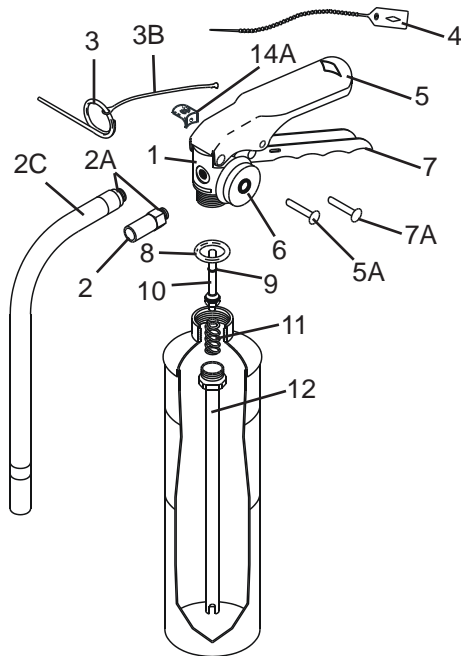
* Hose assemblies for older extinguishers utilizing a swivel type connector are no longer available. Order valve assembly 14874 and hole listed above for that model.

PARTS LIST

for

1¼ - 20 lb. Halon 1211 Extinguisher Models

| | | |
|-------|--------|------|
| 344 | 354 | B369 |
| A344T | A354 | B371 |
| 352 | A354TS | 361 |
| A352 | 355 | 372 |
| C352 | A355 | |
| | B355 | |
| | 369 | |



9

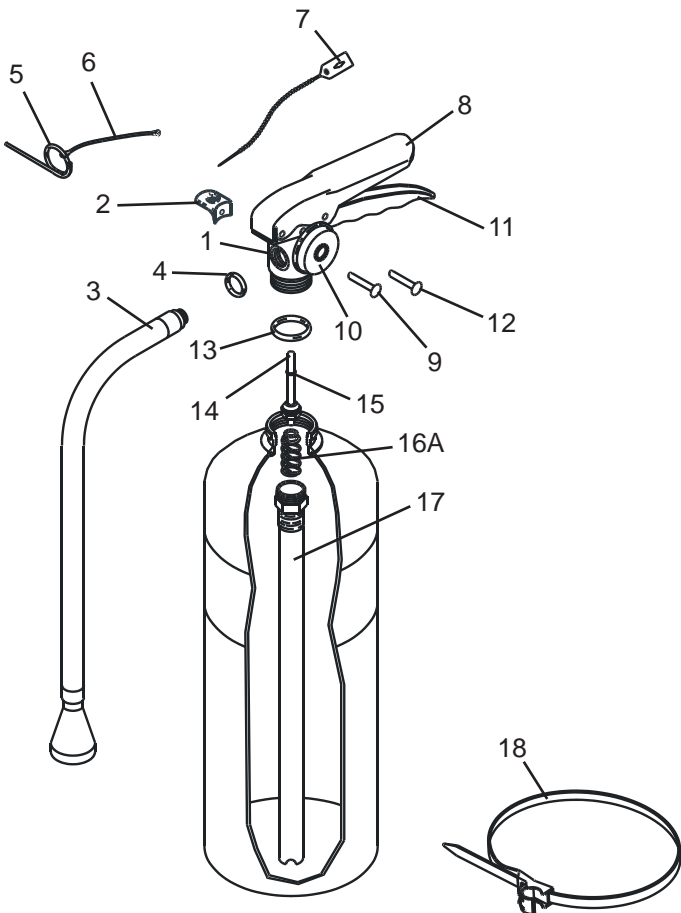
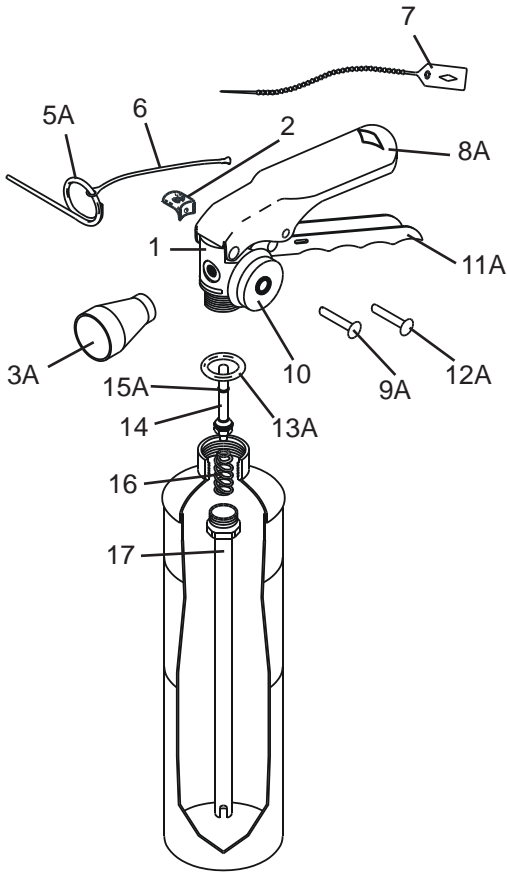
| ITEM NO. | PART NO. | DESCRIPTION | STD. PKG. |
|--|----------|---|-----------|
| 1 | 11953 | Valve Assembly - ALL ALUMINUM MODELS | 1 |
| 1A | 11954 | Valve Assembly - ALL BRASS MODELS | 1 |
| 2 | 6066 | Nozzle with O-Ring - 344/344T, A344T (.067) | 6 |
| | 7115 | Nozzle with O-Ring - 352T, A352T (.098) | |
| | 1727 | Nozzle with O-Ring - 355T, A/B355T (.144) | |
| 2A | 1532 | Hose/Nozzle Gasket (O-Ring) - Aluminum Valve | 24 |
| 2B | 6978 | Hose Gasket (O-Ring) | 24 |
| 2C | 6421 | Hose & Horn Assembly - 354A, A354A, C354A (.098) | 1 |
| 2D | 5180 | Hose & Horn Assembly - 369, B369 (.216) | 1 |
| | 5178 | Hose & Horn Assembly - 371, B371 (.234) | |
| | 5176 | Hose & Horn Assembly - 361 (.152) | |
| | 5174 | Hose & Horn Assembly - 372 (.177) | |
| 3 | 1412 | Ring Pin | 24 |
| | 16353 | Ring Pin 1lb. , 2 1/2 lb. | 24 |
| 3A | 0160 | Ring Pin, Stainless Steel | 24 |
| 3B | 0532 | Chain (Nylon) for Ring Pin | 24 |
| 4 | 1387 | Lock Wire Seal (Yellow) | 500 |
| 5 | 11825 | Lever & Rivet - "A" Valve | 1 |
| 5A | 1060 | Rivet Only for Lever | 24 |
| 5B | 6067 | Lever & Rivet - 344/344T, A344T | 1 |
| | 2625 | Lever & Rivet - FORGED VALVE (Except 344/344T, A344T) | 1 |
| 5C | 7762 | Lever & Rivet - Brass Valve | 1 |
| 5D | 1563 | Rivet Only for Lever - Brass Valve | 24 |
| 6 | 4839 | Gauge - 100 PSI - 344/344T, A344T | 6 |
| | 3105 | Gauge - 125 PSI - 352T, A/C352T, 355T, A/B355T | 6 |
| | 3106 | Gauge - 195 PSI - 354A, A/C354A, 361, 369, B369, 371, B371, 372 | 6 |
| 7 | 11826 | Handle & Rivet - "A" Valve | 1 |
| 7A | 1064 | Rivet Only for Handle - OLD & "A/B" VALVE | 24 |
| 7B | 9001 | Handle & Rivet - 344/344T | 24 |
| | 9002 | Handle & Rivet - OLD VALVE 352T, A354A, 355T | 24 |
| 7C | 9020 | Handle & Rivet - Brass Valve | 1 |
| 7D | 1564 | Rivets for Handle (2 Required) - Brass Valve | 24 |
| 8 | 5241 | Collar O-Ring - Aluminum Valve | 24 |
| | | Collar O-Ring - Aluminum Valve - Bulk Bag | 100 |
| 8A | 5240 | Collar O-Ring | 24 |
| | | Collar O-Ring - Bulk Bag | 100 |
| 9 | 5235 | Valve Stem O-Ring - Aluminum Valve | 24 |
| 9A | 5243 | Valve Stem O-Ring - Brass Valve | 24 |
| 10 | 6092 | Valve Stem Assembly - Aluminum Valve | 6 |
| | | Valve Stem Assembly - Aluminum Valve - Bulk Bag | 96 |
| 10A | 6093 | Valve Stem Assembly - Brass Valve | 6 |
| | | Valve Stem Assembly - Brass Valve - Bulk Bag | 96 |
| 11 | 1074 | Spring - All Aluminum Valve | 6 |
| 11A | 0383 | Spring - All Brass Valve | 6 |
| 12 | 6069 | Downtube/Retainer Ass'y - 344/344T, A344T | 1 |
| | 1075 | Downtube/Retainer Ass'y - 352T, 354A, A/C352T A/C354A | |
| | 6212 | Downtube/Retainer Ass'y - 355T, A/B355T | |
| 12A | 3754 | Downtube/Retainer Ass'y - 369/ B369 | 1 |
| | 2609 | Downtube/Retainer Ass'y - 371, B371 | |
| | 1667 | Downtube/Retainer Ass'y - 361, 372 | |
| 13 | 14776 | Strap & Clip Assembly (Black Plastic) 3/8" Hose 354, A/C354A, 369, 371, B371 | 1 |
| | 14778 | Strap & Clip Assembly (Black Plastic) 1/2" Hose 361, 372, B369 | |
| 14 | 15363 | Hanger Loop with Screw B371 | 6 |
| | 16694 | Hanger Loop with Screw B369, 361, 372 | 6 |
| 14A | 14220 | Hanger Loop with Screw - Aluminum Valve | 6 |
| ALL BRACKETS - SEE BRACKET PAGE | | | |
| ALL FILL & HYDROTEST ADAPTERS - SEE ADAPTERS PAGE | | | |
| All Valve Assemblies include Valve Body, Gauge, Lever and Handle | | | |

PARTS LIST

for

1.4 - 15½ lb. Halotron I Extinguisher Models

| | |
|------|-----|
| A384 | 387 |
| A385 | 397 |
| B385 | 388 |
| A386 | 398 |
| B386 | |
| B394 | |



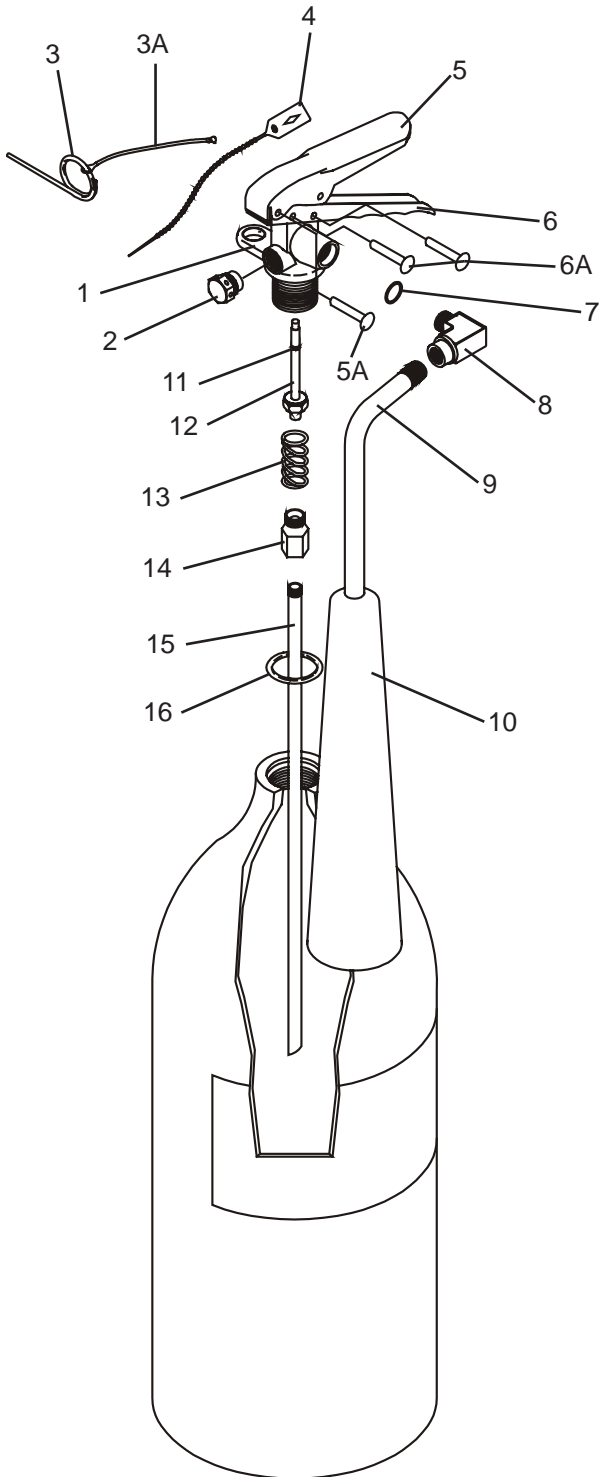
| ITEM NO. | PART NO. | DESCRIPTION | STD. PKG. |
|--|----------|--|-----------|
| 1 | 14527 | Valve Assembly - 387, 388, 397, 398 | 1 |
| 1A | 14525 | Valve Assembly - 384T | 1 |
| | 14526 | Valve Assembly - 385TS, 386T | 1 |
| 2 | 14220 | Hanger Loop with Screw - 384, 385, 386, 394 | 6 |
| | 16694 | Hanger Loop with Screw - 387, 388, 397, 398 | 6 |
| 3 | 14436 | Hose & Nozzle Assembly - 387, 397 (.247) | 1 |
| | 14449 | Hose & Nozzle Assembly - 388, 398, (.295) | |
| 3A | 14407 | Nozzle - 384T (.121) | 1 |
| | 14408 | Nozzle - 385TS (.166) | |
| | 14409 | Nozzle - 386T (.277) | |
| 4 | 6978 | O-Ring, Brass Valve | 24 |
| 4A | 1532 | O-Ring, Nozzle - Aluminum Valve | 24 |
| 5 | 0160 | Ring Pin, Stainless Steel - Brass Valve | 24 |
| 5A | 1412 | Ring Pin | 24 |
| 6 | 0532 | Chain (Nylon) for Ring Pin - ALL | 24 |
| 7 | 1387 | Lock Wire Seal (Yellow) - ALL | 500 |
| 8 | 7762 | Lever & Rivet - All Brass Valve | 1 |
| 8A | 6067 | Lever & Rivet - 384T | 1 |
| | 11825 | Lever & Rivet - 385TS, 386T | 1 |
| 9 | 1563 | Rivet Only for Lever - Brass Valve | 24 |
| 9A | 1060 | Rivet Only for Lever - Aluminum Valve | 24 |
| 10 | 14418 | Gauge - 125 PSI - 384T, 387, 388, 397, 398 | 1 |
| | 14417 | Gauge - 100 PSI - 385TS, 386T | 1 |
| 11 | 9020 | Handle & Rivets - 387, 388, 397, 398 | 1 |
| 11A | 9001 | Handle & Rivet - 384T | 1 |
| 12 | 1564 | Rivet Only for Handle (2 Required) - Brass Valve | 24 |
| 12A | 1064 | Rivet Only for Handle - Aluminum Valve | 24 |
| 13 | 13305 | Collar O-Ring (Green) - Brass Valve | 12 |
| 13A | 14268 | Collar O-Ring (Green) - Aluminum Valve | 12 |
| 14 | 13288 | Valve Stem Assembly (Green Seal) - Brass Valve | 6 |
| 14A | 14327 | Valve Stem Assembly (Green Seal) - Aluminum Valve | 6 |
| 15 | 5243 | Valve Stem O-Ring - Brass Valve | 24 |
| 15A | 5235 | Valve Stem O-Ring - Aluminum Valve | 24 |
| 16 | 1074 | Spring - All Aluminum Valve | 6 |
| 16A | 0383 | Spring - All Brass Valve | 6 |
| 17 | 14285 | Downtube/Retainer Ass'y - 387, 388 | 1 |
| 17A | 6069 | Downtube/Retainer Ass'y - 384T | 1 |
| | 1075 | Downtube/Retainer Ass'y - 385TS | |
| | 6212 | Downtube/Retainer Ass'y - 386T, B385 | |
| | 15507 | Downtube/Retainer Ass'y - 397, 398 | |
| 18 | 14778 | Strap & Clip Assembly (Black Plastic) 1/2" Hose 387, 388, 397, 398 | 1 |
| ALL BRACKETS - SEE BRACKET PAGE | | | |
| ALL FILL & HYDROTEST ADAPTERS - SEE ADAPTERS PAGE | | | |
| All Valve Assemblies include New Valve Body, Gauge, Lever and Handle | | | |

PARTS LIST

for

5 lb. Carbon Dioxide Extinguisher Model

322
322NM



| ITEM NO. | PART NO. | DESCRIPTION | STD. PKG. |
|----------|----------|---|-----------|
| 1 | 3090 | Valve Assembly (Does not include elbow or downtube) | 1 |
| 2 | 4000 | Safety Disc, Gasket and Nut Assembly | 6 |
| 3 | 0160 | Ring Pin, Stainless Steel | 24 |
| | 6901 | Ring Pin, Stainless Steel Non-Magnetic | 24 |
| 3A | 0532 | Chain (Nylon) for Ring Pin | 24 |
| 4 | 1387 | Lock Wire Seal (Yellow) - ALL | 500 |
| 5 | 7762 | Lever & Rivet | 1 |
| 5A | 1563 | Rivet Only for Lever | 24 |
| 6 | 9020 | Handle & Rivets | 1 |
| 6A | 1564 | Rivet Only for Handle (2 Required) | 24 |
| 7 | 5689 | O-Ring for Elbow | 6 |
| 8 | 2735 | Elbow with O-Ring | 1 |
| 9 | 1769 | Discharge Tube | 1 |
| 10 | 1772 | Horn | 1 |
| 11 | 5235 | Valve Stem O-Ring | 24 |
| 12 | 1539 | Valve Stem Assembly | 6 |
| 13 | 0501 | Spring | 6 |
| 14 | 0503 | Retainer | 1 |
| 15 | 0533 | Downtube | 1 |
| 16 | 1124 | Collar O-Ring - 1 1/8" | 24 |

ALL BRACKETS - SEE BRACKET PAGE

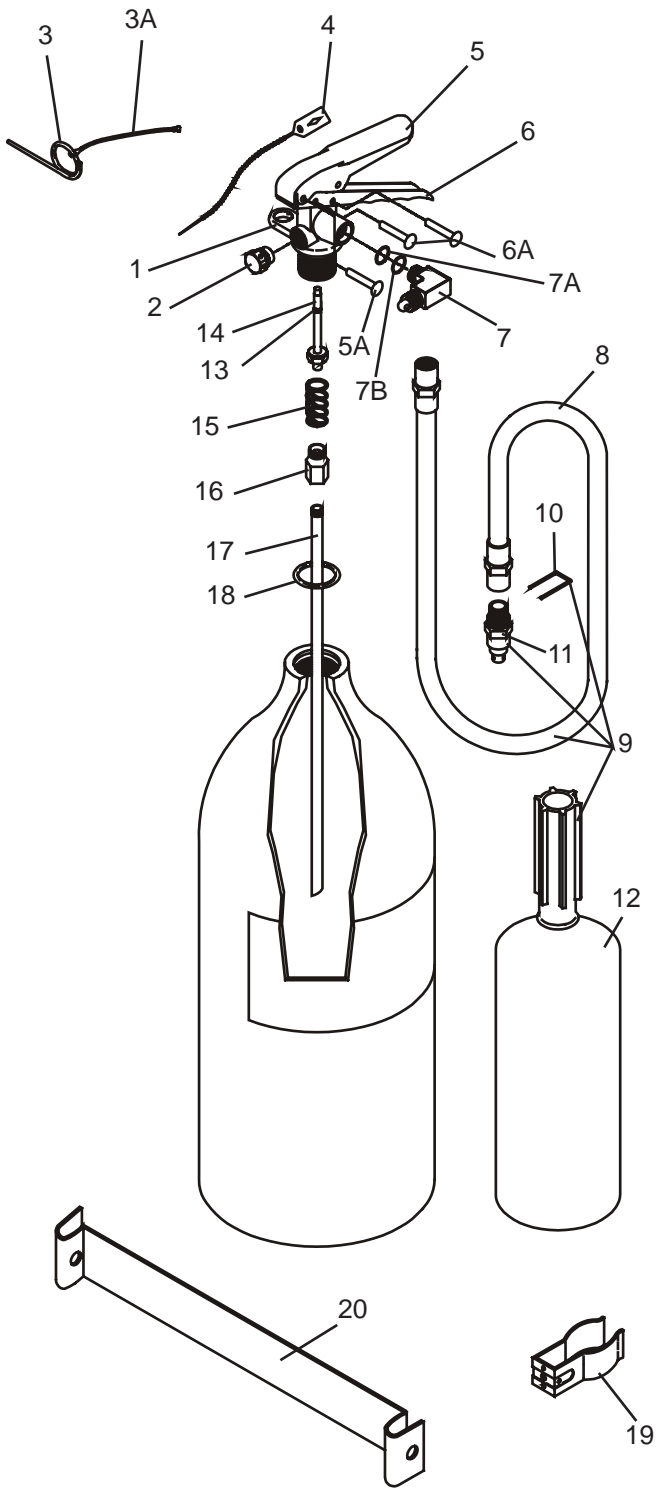
ALL FILL & HYDROTEST ADAPTERS - SEE ADAPTERS PAGE

All Valve Assemblies include Valve Body, Valve Stem Assembly, Spring, Retainer, Lever and Handle

PARTS LIST

for

10 - 20 lb. Carbon Dioxide Extinguisher Models

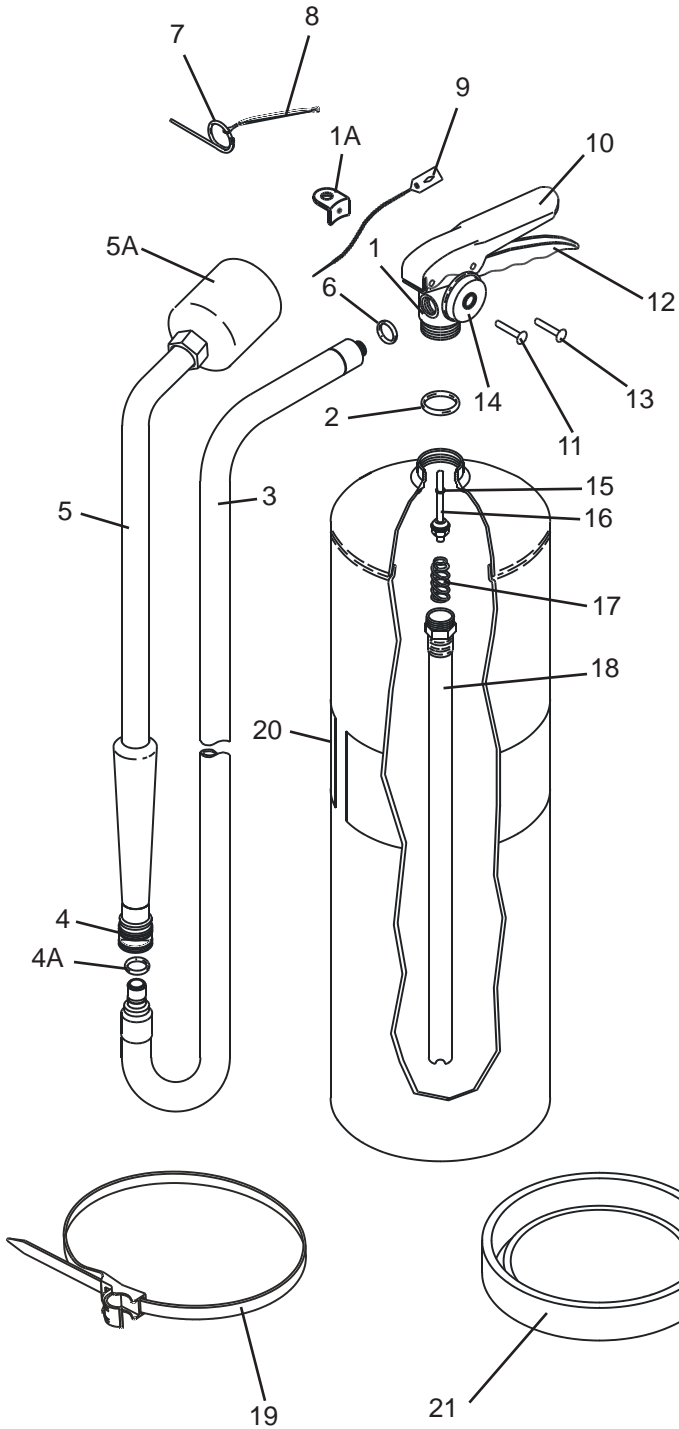


330
331
332

| ITEM NO. | PART NO. | DESCRIPTION | STD. PKG. |
|--|----------|---|-----------|
| 1 | 3090 | Valve Assembly (Does not include elbow or downtube) | 1 |
| 2 | 4000 | Safety Disc, Gasket and Nut Assembly | 6 |
| 3 | 0160 | Ring Pin, Stainless Steel | 24 |
| 3A | 0532 | Chain (Nylon) for Ring Pin | 24 |
| 4 | 1387 | Lock Wire Seal (Yellow) - ALL | 500 |
| 5 | 7762 | Lever & Rivet | 1 |
| 5A | 1563 | Rivet Only for Lever | 24 |
| 6 | 9020 | Handle & Rivets | 1 |
| 6A | 1564 | Rivet Only for Handle (2 Required) | 24 |
| 7 | 2309 | Elbow with O-Ring and Spacer | 1 |
| 7A | 5689 | O-Ring for Elbow | 6 |
| 7B | 2216 | Nylon Spacer for Elbow | 6 |
| 8 | 1776 | Hose Assembly - 330, 331, 332 | 1 |
| 9 | 1782 | Hose & Horn Assembly - 330 | 1 |
| | 1705 | Hose & Horn Assembly - 331, 332 | 1 |
| 10 | 0594 | U-Pin | 6 |
| 11 | 1777 | Nozzle | 1 |
| 12 | 0572 | Horn - 330 | 1 |
| | 0593 | Horn - 331, 332 | 1 |
| 13 | 5235 | Valve Stem O-Ring | 24 |
| 14 | 1539 | Valve Stem Assembly | 6 |
| 15 | 0501 | Spring | 6 |
| 16 | 0503 | Retainer | 1 |
| 17 | 0564 | Downtube - 330 | 1 |
| | 0589 | Downtube - 331, 332 | 1 |
| 18 | 1124 | Collar O-Ring - 1 1/8" | 24 |
| 19 | 2073 | Horn Clip (Red) | 1 |
| * | 4489 | Screw & Nut for Horn Clip Strap Assembly | 12 |
| 20 | 5442 | Strap (Red) for Horn Clip - 330, 331 | 1 |
| | 5441 | Strap (Red) for Horn Clip - 332 | 1 |
| ALL BRACKETS - SEE BRACKET PAGE | | | |
| ALL FILL & HYDROTEST ADAPTERS - SEE ADAPTERS PAGE | | | |
| All Valve Assemblies include Valve Body, Valve Stem Assembly, Spring, Retainer, Lever and Handle | | | |
| * Not Shown | | | |

PARTS LIST for 30 lb. Class D Extinguisher Models

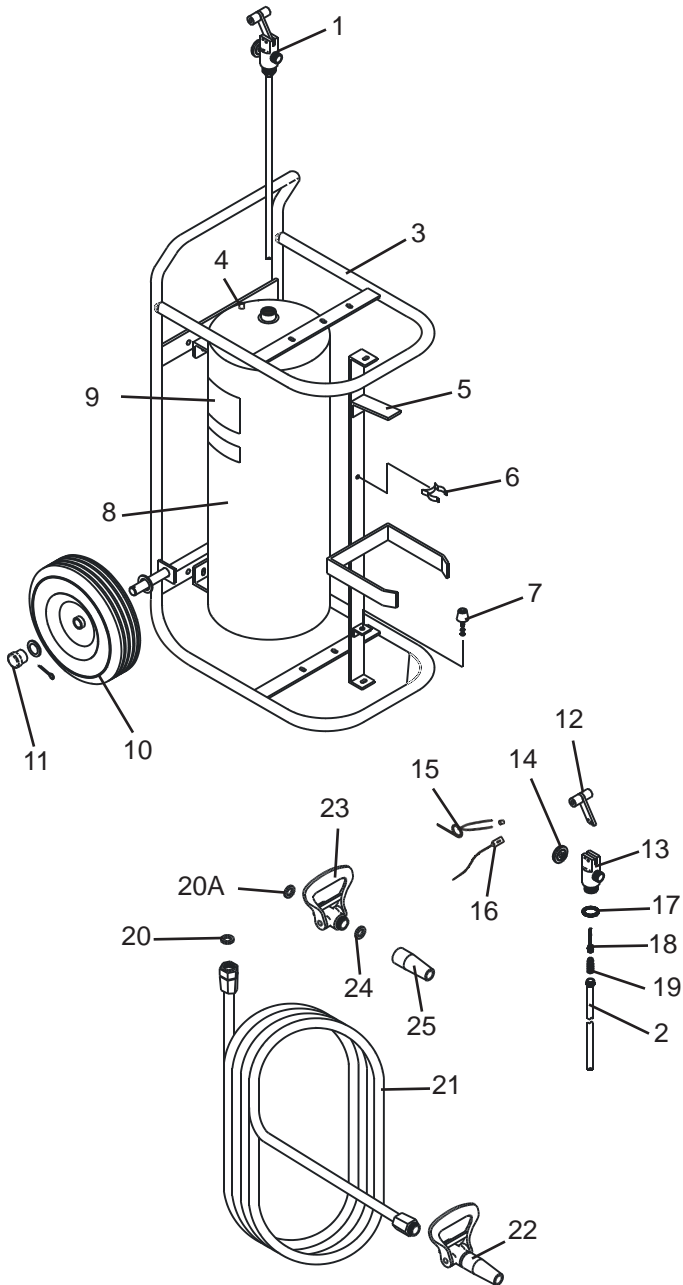
570
571
B570
B571



| ITEM NO. | PART NO. | DESCRIPTION | STD. PKG. |
|--|----------|--|-----------|
| 1 | 11952 | Valve Assembly - ALL MODELS | 1 |
| 1A | 17144 | Hanger Loop with Screw B570, B571 | 6 |
| 2 | 5240 | Collar O-Ring | 24 |
| | | Collar O-Ring - Bulk Bag | 100 |
| 3 | 10744 | Hose Ass'y w/ 1/2" Male Quick Connect | 1 |
| 4 | 10802 | Female 1/2" Female Quick Connect | 1 |
| 4A | 9073 | O-Ring for Quick Connect | 1 |
| 5 | 10800 | Extension Applicator | 1 |
| 5A | 14595 | Horn | 1 |
| 6 | 6978 | Hose Gasket (O-Ring) | 24 |
| 7 | 0160 | Ring Pin, Stainless Steel | 24 |
| 8 | 0532 | Chain (Nylon) for Ring Pin | 24 |
| 9 | 1387 | Lock Wire Seal (Yellow) | 500 |
| 10 | 7762 | Lever & Rivet - ALL MODELS | 1 |
| 11 | 1563 | Rivet Only for Lever | 24 |
| 12 | 9020 | Handle & Rivets - ALL MODELS | 1 |
| 13 | 1564 | Rivets Only for Handle (2 Required) | 24 |
| 14 | 3965 | Gauge - 195 PSI | 6 |
| 15 | 5243 | Valve Stem O-Ring | 24 |
| 16 | 6093 | Valve Stem Assembly | 6 |
| | | Valve Stem Assembly - Bulk Bag | 96 |
| 17 | 17139 | Spring - B570, B571 | 6 |
| 18 | 17215 | Downtube/Retainer Ass'y - 570, 571 | 1 |
| | 17214 | Downtube/Retainer Ass'y - B570, B571 | |
| 19 | 16904 | Strap & Hose Clip Ass'y (Black Plastic) 3/8" (2 Required) 570, 571, B570, B571 | 1 |
| 20 | 8281 | Label (Fire Ratings) - 570 | 1 |
| | 10853 | Label (Fire Ratings) - 571 | |
| 21 | 12383 | Protective Ring for 7" Cylinder 570, 571 | 1 |
| | 12952 | Protective Ring for 8" Cylinder B570, B571 | |
| ALL BRACKETS - SEE BRACKET PAGE | | | |
| ALL FILL & HYDROTEST ADAPTERS - SEE ADAPTERS PAGE | | | |
| All Valve Assemblies include Valve Body, Gauge, Lever and Handle | | | |

PARTS LIST for 50 lb. Dry Chemical Wheeled/Stationary Extinguisher Models

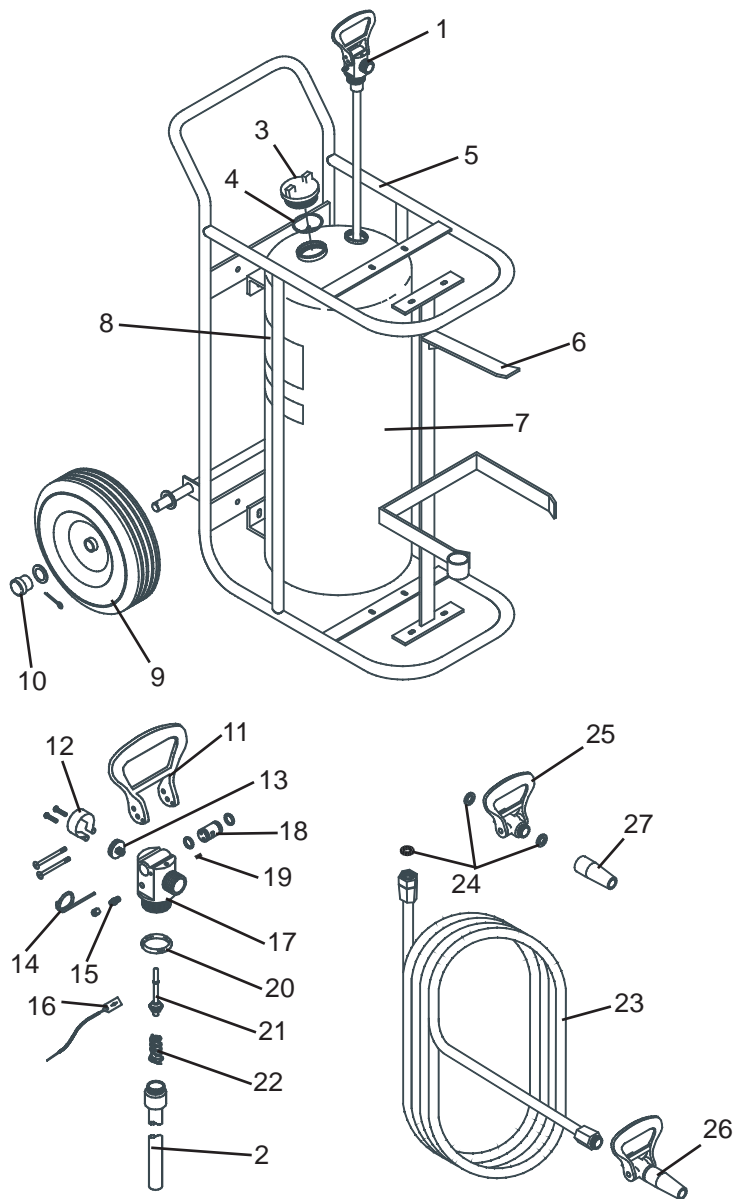
| | |
|-----|-----|
| 495 | 473 |
| 496 | 474 |
| 497 | 475 |



| ITEM NO. | PART NO. | DESCRIPTION | STD. PKG. |
|---|----------|--|-----------|
| 1 | 6018 | Valve Assembly Complete with Downtube | 1 |
| 2 | 6072 | Downtube/Retainer Assembly | 1 |
| 3 | 6625 | Carriage Assembly without Wheels | 1 |
| 4 | 0155 | Pressure Valve and Cap Assembly (Older Models Only) | 12 |
| 5 | 6374 | Hose Support with Hardware, Hose Clip and Nozzle Mount | 1 |
| 6 | 6375 | Hose Clip with Mounting Hardware | 1 |
| 7 | 6376 | Nozzle Mount with Hardware | 1 |
| 9 | 7480 | Pictogram - Model 495, 473 | 1 |
| | 7482 | Pictogram - Models 496, 497, 474, 475 | 1 |
| 10 | 6377 | Wheel Assembly 12½" with Hub Cap, Washer and Retaining Pin | 1 |
| 11 | 4945 | Hub Cap | 1 |
| 12 | 6373 | Valve Lever ("T" Handle - Complete) | 1 |
| 13 | 6153 | Valve Body | 1 |
| 14 | 5225 | Gauge - 240 PSI | 1 |
| 15 | 6100 | Ring Pin, Stainless Steel with Wire | 12 |
| 16 | 1387 | Lock Wire Seal (Yellow) | 500 |
| 17 | 5240 | Collar O-Ring | 24 |
| | | Collar O-Ring - Bulk Bag | 100 |
| 18 | 6022 | Valve Stem Assembly | 6 |
| 19 | 0383 | Spring | 6 |
| 20 | 7247 | Gasket, Hose | 6 |
| 20A | 6056 | Gasket Valve | 6 |
| 21 | 6015 | Hose Assembly 25 ft. with Gasket | 1 |
| 22 | 6397 | Nozzle Assembly (Ball Valve & Tip) - 495, 473 | 1 |
| | 6395 | Nozzle Assembly (Ball Valve & Tip) - 495, 474 | |
| | 6396 | Nozzle Assembly (Ball Valve & Tip) - 497, 475 | |
| 23 | 6031 | Ball Valve Assembly | 1 |
| 24 | 3877 | Gasket, Nozzle | 6 |
| 25 | 6208 | Nozzle Tip - 495, 473 (.328) | 1 |
| | 6032 | Nozzle Tip - 496, 474 (.265) | |
| | 6210 | Nozzle Tip - 497, 475 (281) | |
| ALL FILL & HYDROTEST ADAPTERS - SEE ADAPTERS PAGE | | | |
| Replacement Valve Assemblies include Valve Body, Gauge, Lever, Valve Stem Assembly, Spring and Downtube/Retainer Assembly | | | |

PARTS LIST for 125/150 lb. Dry Chemical Stored Pressure Wheeled/Stationary Extinguisher Models

488 476
489 477
490 478



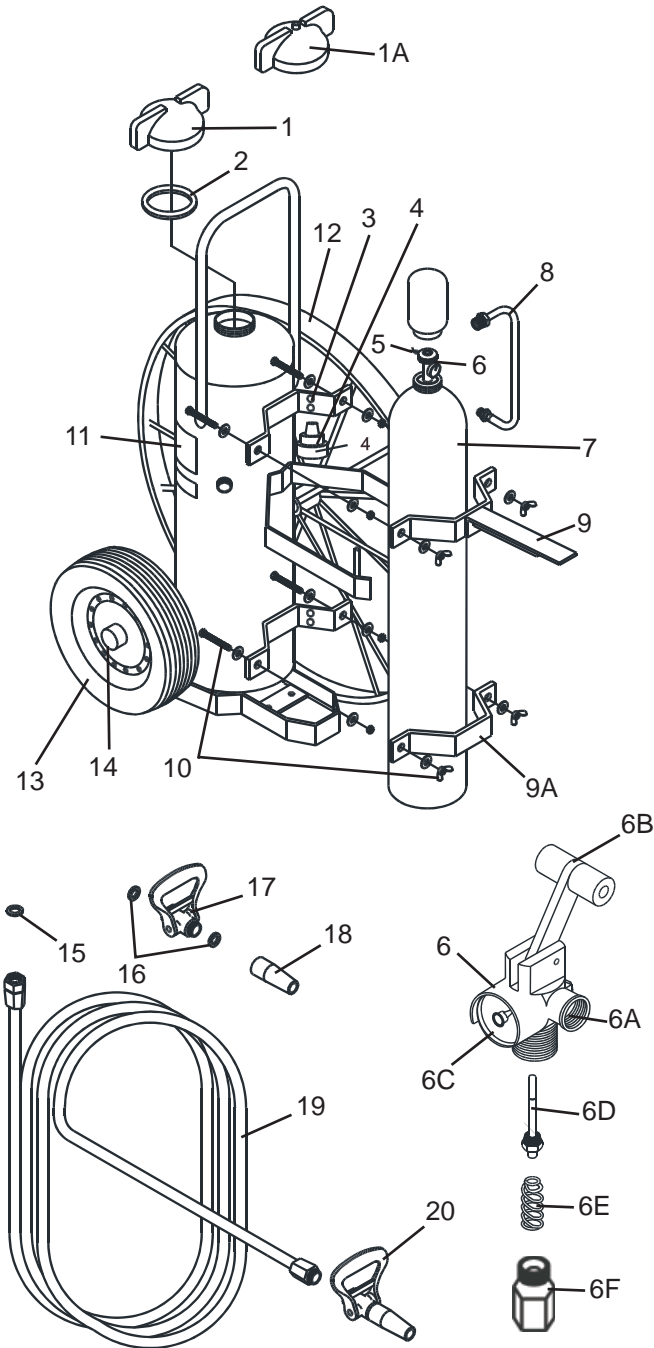
| ITEM NO. | PART NO. | DESCRIPTION | STD. PKG. |
|--|----------|--|-----------|
| 1 | 5197 | Valve Assembly Complete with Downtube | 1 |
| 2 | 4938 | Downtube/Retainer Assembly | 1 |
| 3 | 9300 | Fill Cap | 1 |
| 4 | 8392 | Gasket, Fill Cap | 1 |
| 5 | 10431 | Carriage Assembly without Wheels | 1 |
| 6 | 10430 | Hose Support with Hardware | 1 |
| 7 | 10467 | Cylinder | 1 |
| 8 | 7481 | Pictogram - 488, 476 | 1 |
| | 7483 | Pictogram - 489, 490, 477, 478 | |
| 9 | 7751 | Wheel Assembly 16" with Hub Cap, Washer and Retaining Pin (Semi-Pneumatic) | 1 |
| 10 | 4945 | Hub Cap | 1 |
| 11 | 6059 | Valve Lever with Screws | 1 |
| 12 | 3562 | Gauge Guard Assembly | 1 |
| 13 | 5225 | Gauge - 240 PSI | 1 |
| 14 | 6100 | Ring Pin, Stainless Steel with Wire | 12 |
| 15 | 0155 | Pressure Valve and Cap Assembly | 12 |
| 16 | 1387 | Lock Wire Seal (Yellow) | 500 |
| 17 | 3678 | Valve Body | 1 |
| 18 | 6060 | Cam Assembly with O-Rings | 1 |
| 19 | 14218 | Pipe Plug - For Safety Disc Port | 1 |
| | 3787 | Safety Disc Assembly (OPTIONAL) | 1 |
| 20 | 5239 | Collar O-Ring | 12 |
| 21 | 5067 | Valve Stem Assembly | 6 |
| 22 | 3556 | Spring | 6 |
| 23 | 3501 | Hose Assembly 50 ft. with Gasket | 1 |
| 24 | 3877 | Gasket, Hose and Nozzle | 6 |
| 25 | 6279 | Ball Valve Assembly | 1 |
| 26 | 5191 | Nozzle Assembly (Ball Valve & Tip) - 488, 489, 476, 477 | 1 |
| | 7432 | Nozzle Assembly (Ball Valve & Tip) - 490, 478 | |
| 27 | 6470 | Nozzle Tip - 488, 489, 476, 477 (.344) | 1 |
| | 6208 | Nozzle Tip - 490, 478 (.328) | |
| ALL FILL & HYDROTEST ADAPTERS - SEE ADAPTERS PAGE | | | |
| Replacement Valve Assemblies include Valve Body, Gauge, Gauge Guard, Cam, Pressure Valve & Cap, Lever, Valve Stem Assembly, Spring, Downtube/Retainer Assembly | | | |

PARTS LIST

for

125/150 lb. Dry Chemical 110 CU. FT. Nitrogen Cylinder Wheeled/Stationary Extinguisher Models

| | | |
|-----|-----|-----|
| 467 | 470 | 485 |
| 468 | 471 | 486 |
| 469 | 472 | 487 |



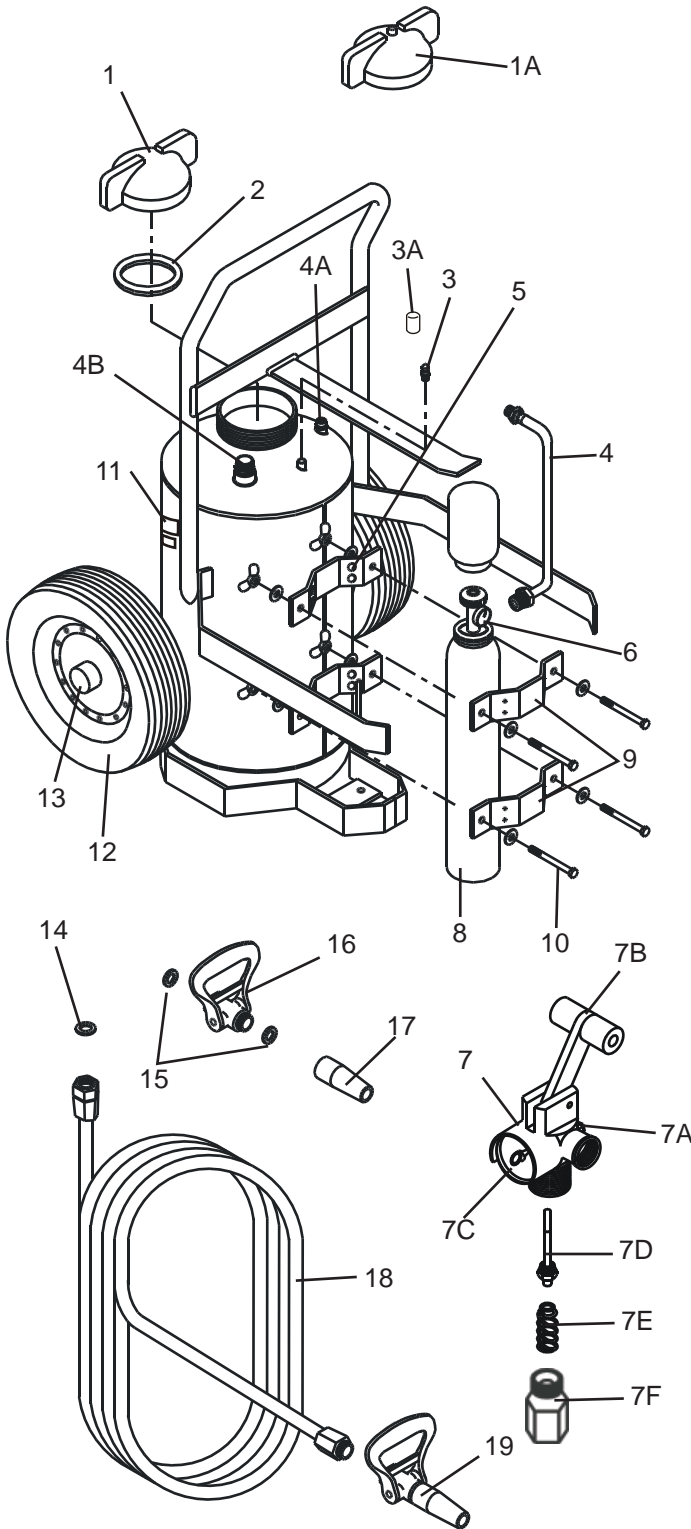
| ITEM NO. | PART NO. | DESCRIPTION | STD. PKG. |
|--|----------|--|-----------|
| 1 | 6993 | Cap, Agent Cylinder | 1 |
| 1A | 12576 | Cap, Agent Cylinder with Pressure Indicator | 1 |
| 2 | 2272 | Gasket, Cap | 1 |
| 3 | 13958 | Bumper, Rubber | 12 |
| 4 | 2235 | Nitrogen Pressure Regulator | 1 |
| 5 | 1387 | Lock Wire Seal (Yellow) | 500 |
| 6 | 12467 | Nitrogen Valve with Gauge ("T" Handle Quick Release) | 1 |
| 6A | 16516 | Safety Disc, Gasket and Nut Assembly | 1 |
| 6B | 6373 | Valve Lever ("T" Handle - Complete) | 1 |
| 6C | 10213 | Gauge - 3000 PSI | 1 |
| 6D | 9897 | Valve Stem Assembly | 6 |
| 6E | 12466 | Spring | 6 |
| 6F | 9627 | Retainer | 6 |
| 7 | 4128 | Nitrogen Cylinder (110 cu. ft.) - Charged with Cap | 1 |
| 8 | 2234 | Nitrogen Hose Assembly | 1 |
| 9 | 11024 | Retaining Strap (Top) - Nitrogen Cylinder | 1 |
| 9A | 11021 | Retaining Strap (Bottom) - Nitrogen Cylinder | 1 |
| 10 | 16483 | Bolt, Washer and Wing Nut | 1 |
| 11 | 7485 | Pictogram - 467, 470, 485 | 1 |
| | 7484 | Pictogram - 468, 469, 471, 472, 486, 487 | |
| 12 | 7025 | Wheel Assembly - 36" x 2½" | 1 |
| * | 7050 | Wheel Assembly - 36" x 2½" with Rubber Tread | 1 |
| * | 16984 | Hub Cap - 36" Wheels | 1 |
| 13 | 7751 | Wheel Assembly 16" with Hub Cap, Washer and Retaining Pin (Semi-Pneumatic) | 1 |
| 14 | 4945 | Hub Cap - 16" Wheels | 1 |
| 15 | 7411 | Moisture Seal | 1 |
| 16 | 3877 | Gasket, Hose and Nozzle | 6 |
| 17 | 6279 | Ball Valve Assembly | 1 |
| 18 | 6032 | Nozzle Tip (.265) | 1 |
| 19 | 3501 | Hose Assembly - 50 ft. | 1 |
| 20 | 7574 | Nozzle Assembly (Ball Valve & Tip) | 1 |
| ALL HYDROTEST ADAPTERS - SEE ADAPTERS PAGE | | | |
| * Not Shown | | | |

PARTS LIST

for

125/150 lb. Dry Chemical 23 CU. FT. Nitrogen Cylinder Wheeled/Stationary Extinguisher Models

| | |
|-----|-----|
| 450 | 481 |
| 451 | 482 |
| 452 | 483 |



| ITEM NO. | PART NO. | DESCRIPTION | STD. PKG. |
|----------|----------|--|-----------|
| 1 | 6993 | Cap, Agent Cylinder | 1 |
| 1A | 12576 | Cap, Agent Cylinder with Pressure Indicator | 1 |
| 2 | 2272 | Gasket, Cap | 1 |
| 3 | 3787 | Safety Disc Assembly | 1 |
| 3A | 13956 | Protective Vinyl Cap | 1 |
| 4 | 3818 | Nitrogen Hose Assembly | 1 |
| 4A | 3785 | Nitrogen Tube Assembly | 1 |
| 4B | 3784 | Downtube Assembly | 1 |
| 5 | 13958 | Bumper, Rubber | 12 |
| 6 | 1387 | Lock Wire Seal (Yellow) | 500 |
| 7 | 12467 | Nitrogen Valve with Gauge ("T" Handle Quick Release) | 1 |
| 7A | 16516 | Safety Disc, Gasket and Nut Assembly | 1 |
| 7B | 6373 | Valve Lever ("T" Handle - Complete) | 1 |
| 7C | 10213 | Gauge - 3000 PSI | 1 |
| 7D | 9897 | Valve Stem Assembly | 6 |
| 7E | 12466 | Spring | 6 |
| 7F | 9627 | Retainer | 1 |
| 8 | 3817 | Nitrogen Cylinder (23 cu. ft.) - Charged with Cap | 1 |
| 9 | 4072 | Retaining Strap - Nitrogen Cylinder | 1 |
| 10 | 11970 | Bolt, Washer and Wing Nut | 1 |
| 11 | 7485 | Pictogram - 450, 481 | 1 |
| | 7484 | Pictogram - 451, 452 | |
| 12 | 7751 | Wheel Assembly 16" with Hub Cap, Washer and Retaining Pin (Semi-Pneumatic) | 1 |
| 13 | 4945 | Hub Cap - 16" Wheels | 1 |
| 14 | 7411 | Moisture Seal | 1 |
| 15 | 3877 | Gasket, Hose and Nozzle | 6 |
| 16 | 6279 | Ball Valve Assembly | 1 |
| 17 | 6467 | Nozzle Tip (.312) | 1 |
| 18 | 3501 | Hose Assembly - 50 ft. | 1 |
| 19 | 6717 | Nozzle Assembly (Ball Valve & Tip) | 1 |

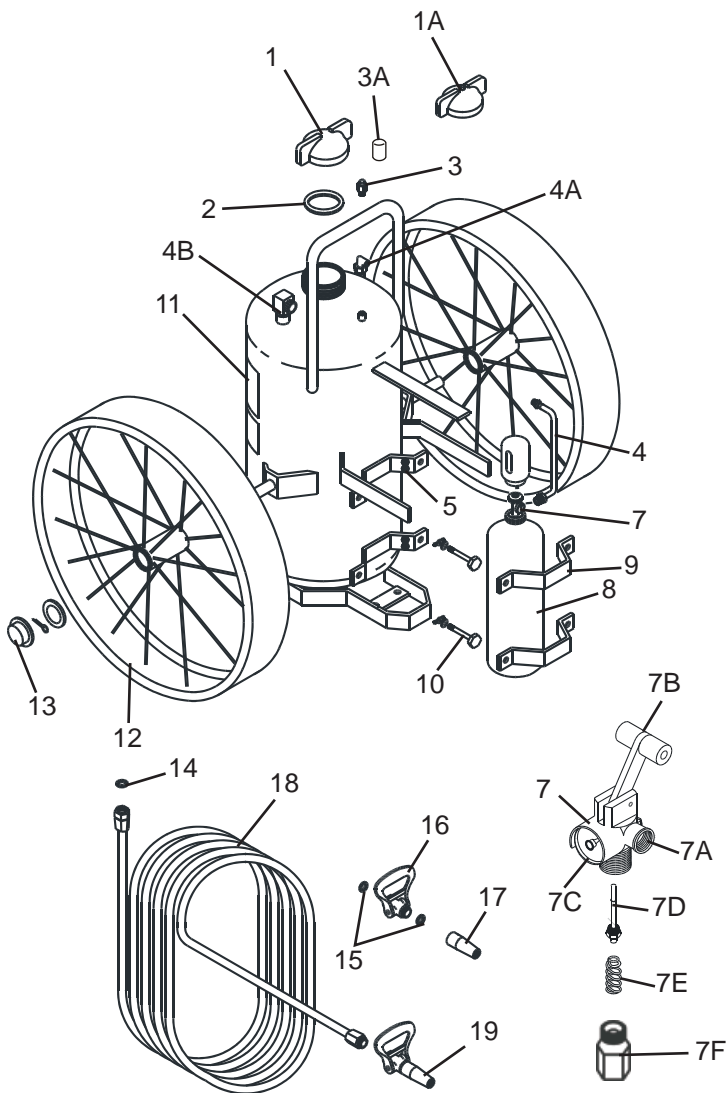
ALL HYDROTEST ADAPTERS - SEE ADAPTERS PAGE

PARTS LIST

for

300/350 lb. Dry Chemical 55 CU. FT. Nitrogen Cylinder Wheeled/Stationary Extinguisher Models

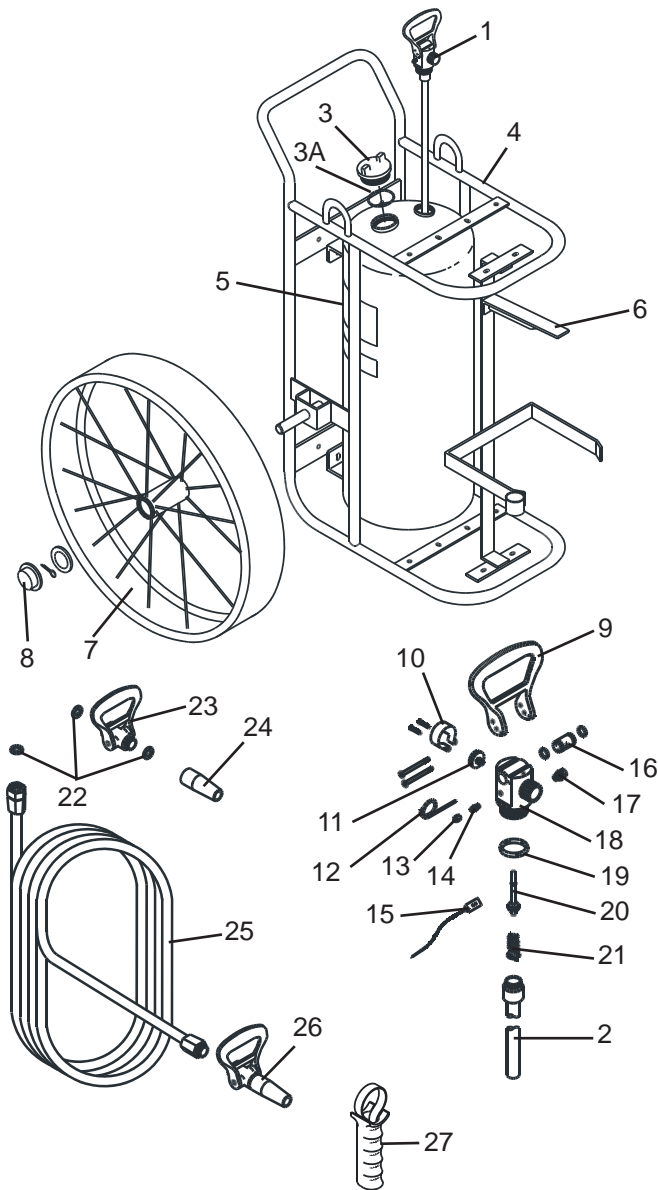
491 464
492
493 466



| ITEM NO. | PART NO. | DESCRIPTION | STD. PKG. |
|---|----------|---|-----------|
| 1 | 6993 | Cap, Agent Cylinder | 1 |
| 1A | 12576 | Cap, Agent Cylinder with Pressure Indicator | 1 |
| 2 | 2272 | Gasket, Cap | 1 |
| 3 | 3787 | Safety Disc Assembly | 1 |
| 3A | 13956 | Protective Vinyl Cap | 1 |
| 4 | 7292 | Nitrogen Hose Assembly | 1 |
| 4A | 6789 | Nitrogen Tube Assembly | 1 |
| 4B | 6784 | Downtube Assembly | 1 |
| | 7575 | Downtube Assembly (Vent Models) | 1 |
| 5 | 13958 | Bumper, Rubber | 12 |
| 6 | 1387 | Lock Wire Seal (Yellow) | 500 |
| 7 | 12467 | Nitrogen Valve with Gauge ("T" Handle Quick Release) | 1 |
| 7A | 16516 | Safety Disc, Gasket and Nut Assembly | 1 |
| 7B | 6373 | Valve Lever ("T" Handle - Complete) | 1 |
| 7C | 10213 | Gauge - 3000 PSI | 1 |
| 7D | 9897 | Valve Stem Assembly | 6 |
| 7E | 12466 | Spring | 6 |
| 7F | 9627 | Retainer | 1 |
| 8 | 6809 | Nitrogen Cylinder (55 cu. ft.) - Charged with Cap | 1 |
| 9 | 11021 | Retaining Strap - Nitrogen Cylinder | 1 |
| 10 | 16483 | Bolt, Washer and Wing Nut | 1 |
| 11 | 7485 | Pictogram - 491, 464 | 1 |
| | 7484 | Pictogram - 492, 493, 466 | |
| 12 | 7026 | Wheel Assembly 36" x 6" (Red) | 1 |
| * | 7607 | Wheel Assembly 36" x 6" with Rubber Tread | 1 |
| 13 | 7389 | Hub Cap with Washer and Cotter Pin | 1 |
| 14 | 7411 | Moisture Seal | 1 |
| 15 | 3877 | Gasket, Hose and Nozzle | 6 |
| 16 | 6279 | Ball Valve Assembly | 1 |
| 17 | 8260 | Nozzle Tip - 491, 492, 464, 465(.531) | 1 |
| | 8261 | Nozzle Tip - 493, 466 (.469) | |
| 18 | 6814 | Hose Assembly - 50 ft. | 1 |
| 19 | 7385 | Nozzle Assembly (Ball Valve & Tip) - 491, 492, 464, 465 | 1 |
| | 7387 | Nozzle Assembly (Ball Valve & Tip) - 493, 466 | 1 |
| ALL HYDROTEST ADAPTERS - SEE ADAPTERS PAGE | | | |
| * Not Shown | | | |

PARTS LIST for 125/250 lb. Dry Chemical Stored Pressure Wheeled/Stationary High Performance Extinguisher Models

| | | |
|-----|-----|-----|
| 573 | 596 | |
| 574 | 597 | |
| 575 | 598 | 690 |



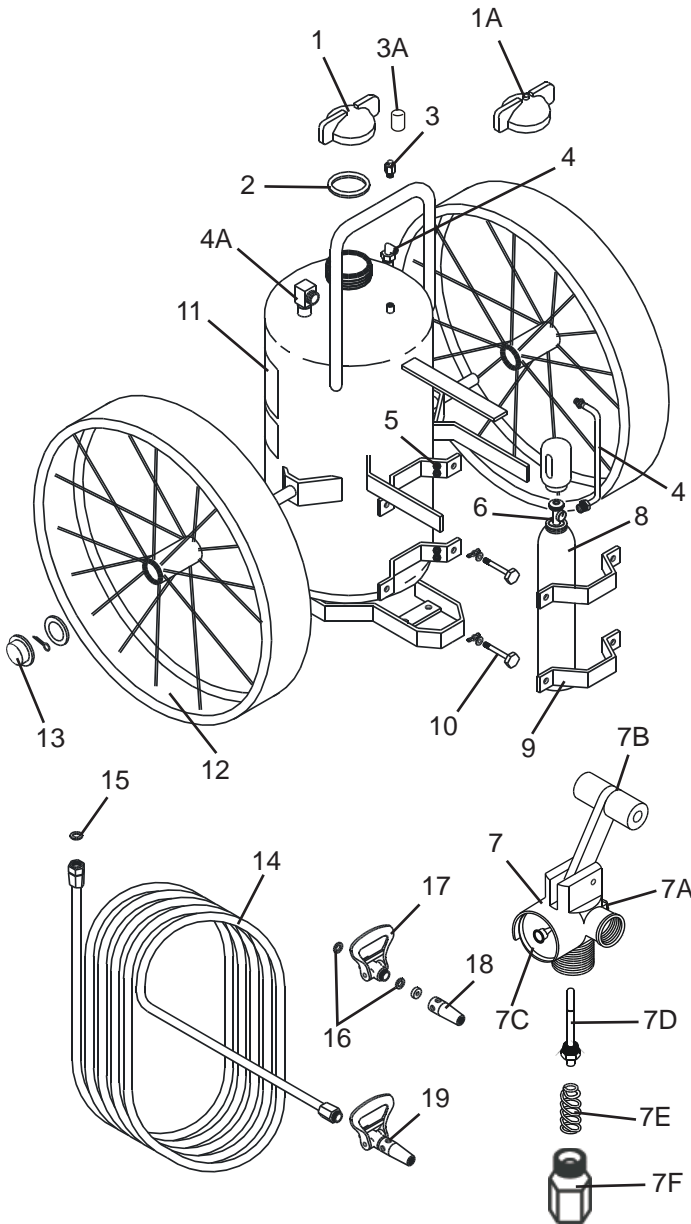
| ITEM NO. | PART NO. | DESCRIPTION | STD. PKG. |
|---|----------|--|-----------|
| 1 | 8715 | Valve Assembly Complete with Downtube | 1 |
| | 5197 | Valve Assembly Complete with Downtube - 690 | 1 |
| 2 | 9856 | Downtube/Retainer Assembly | 1 |
| | 4938 | Downtube/Retainer Assembly - 690 | 1 |
| 3 | 9300 | Cap, Agent Cylinder | 1 |
| 3A | 8392 | Gasket, Fill Cap | 1 |
| 4 | 12176 | Carriage Ass'y (Galvanized) w/o Wheels | 1 |
| | 16786 | Carriage Ass'y (Galvanized) w/o Wheels - 690 | 1 |
| 5 | 7481 | Pictogram - 573, 596 | 1 |
| | 7483 | Pictogram - 575, 574, 596, 597, 598, 690 | |
| 6 | 9553 | Hose Support Ass'y w/ Mounting Hardware | 1 |
| | 10430 | Hose Support Ass'y w/ Mounting Hardware - 690 | 1 |
| 7 | 12180 | Wheel Assmby 36" x 6" (Red - Galvanized) | 1 |
| 8 | 7389 | Hub Cap with Washer and Cotter Pin | 1 |
| 9 | 6059 | Valve Lever with Screws | 1 |
| 10 | 16723 | Gauge Guard Assembly | 1 |
| 11 | 8714 | Gauge - 350 PSI | 1 |
| | 5225 | Gauge - 240 PSI - 690 | 1 |
| 12 | 6100 | Ring Pin, Stainless Steel with Wire | 12 |
| 13 | 7309 | Pressure Valve | 1 |
| | 3559 | Pressure Valve - 690 | 1 |
| 14 | 7310 | Cap for Pressure Valve | 1 |
| | 0158 | Cap for Pressure Valve - 690 | 1 |
| 15 | 1387 | Lock Wire Seal (Yellow) | 500 |
| 16 | 6060 | Cam Assembly with O-Rings | 1 |
| 17 | 8573 | Safety Disc Assembly (except 690) | 1 |
| | 3787 | Safety Disc Assembly (optional on 690) | 1 |
| 14218 | | Pipe Plug - 690 | 1 |
| 18 | 3678 | Valve Body | 1 |
| 19 | 5239 | Collar O-Ring | 12 |
| 20 | 5067 | Valve Stem Assembly | 6 |
| 21 | 3556 | Spring | 6 |
| 22 | 3877 | Gasket, Hose / Nozzle | 6 |
| 23 | 6279 | Ball Valve Assembly | 1 |
| 24 | 9399 | Nozzle Tip - 573, 574, 596, 597 (.625) | 1 |
| | 8260 | Nozzle Tip - 575, 598, 690 (.531) | 1 |
| 25 | 6814 | Hose Assembly - 50 ft. | 1 |
| 26 | 9543 | Nozzle Assembly (Ball Valve & Tip) - 573, 574, 596, 597, 690 | 1 |
| | 7385 | Nozzle Assembly (Ball Valve & Tip) - 575, 598 | 1 |
| 27 | 9711 | Pistol Grip | 1 |
| ALL FILL & HYDROTEST ADAPTERS - SEE ADAPTERS PAGE | | | |
| NOTE: Replacement Valve Assemblies include Valve Body, Gauge, Gauge Guard, Safety Disc Assembly, Cam, Pressure Valve & Cap, Lever, Valve Stem Assembly, Spring and Downtube/Retainer Assembly (as required). | | | |

PARTS LIST

for

33 Gal. FFFP Foam 23 CU. FT. Nitrogen Cylinder Wheeled/Stationary Extinguisher Models

630
631

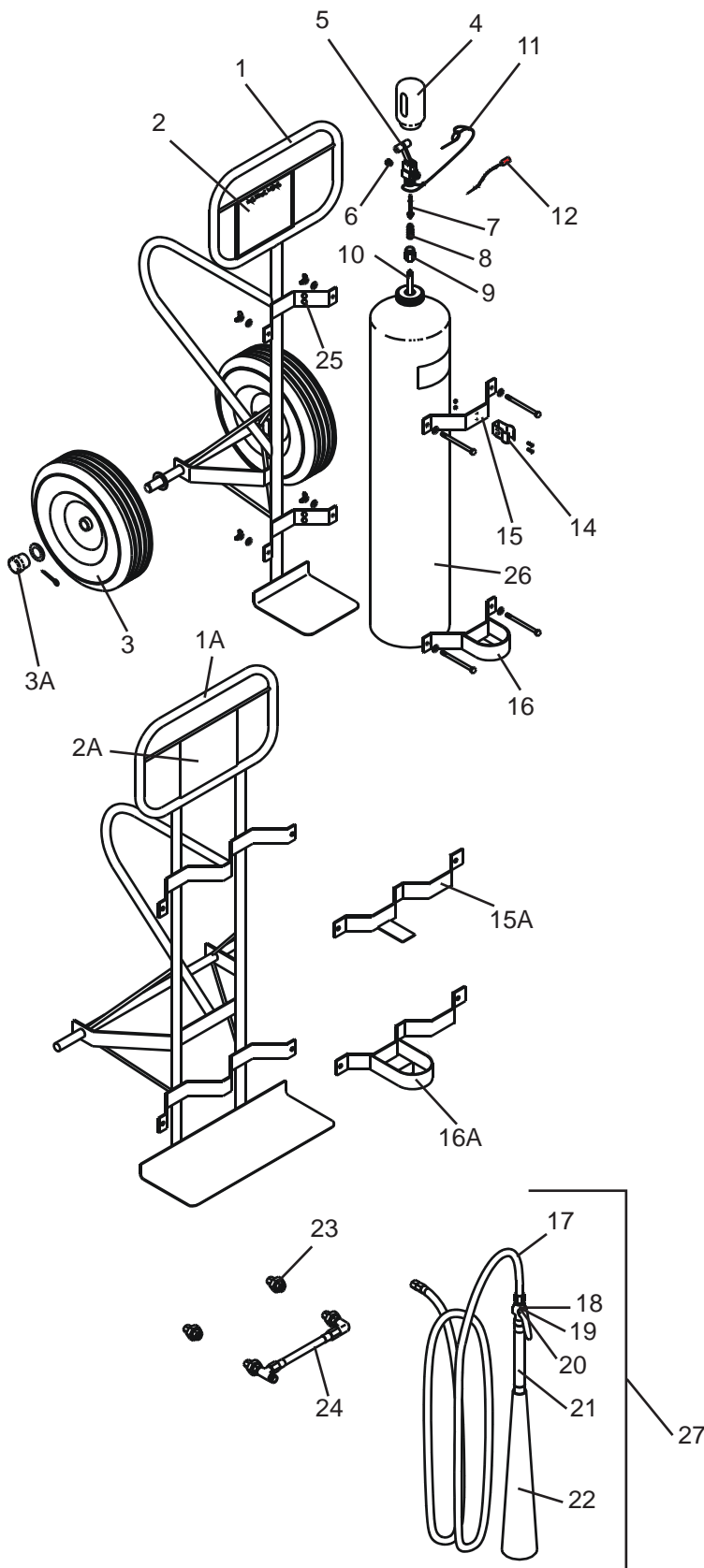


| ITEM NO. | PART NO. | DESCRIPTION | STD. PKG. |
|----------|----------|--|-----------|
| 1 | 6993 | Cap, Agent Cylinder | 1 |
| 1A | 12576 | Cap, Agent Cylinder with Pressure Indicator | 1 |
| 2 | 2272 | Gasket, Cap | 1 |
| 3 | 3787 | Safety Disc Assembly - 630 | 1 |
| | 7665 | Safety Disc Assembly - 631 | |
| 3A | 13956 | Protective Vinyl Cap | 1 |
| 4 | 7292 | Nitrogen Hose Assembly | 1 |
| | 6883 | Nitrogen Tube Assembly | |
| 4A | 6784 | Downtube Assembly | 1 |
| 5 | 13958 | Bumper, Rubber | 12 |
| 6 | 1387 | Lock Wire Seal (Yellow) | 500 |
| 7 | 12467 | Nitrogen Valve with Gauge ("T" Handle Quick Release) | 1 |
| 7A | 16516 | Safety Disc, Gasket and Nut Assembly | 1 |
| 7B | 6373 | Valve Lever ("T" Handle - Complete) | 1 |
| 7C | 10213 | Gauge - 3000 PSI | 1 |
| 7D | 9897 | Valve Stem Assembly | 6 |
| 7E | 12466 | Spring | 6 |
| 7F | 9627 | Retainer | |
| 8 | 3817 | Nitrogen Cylinder (23 cu. ft.) - Charged with Cap | 1 |
| 9 | 4072 | Retaining Strap - Nitrogen Cylinder | 1 |
| 10 | 11970 | Bolt, Washer and Wing Nut | 1 |
| 11 | 7479 | Pictogram - 630, 631 | 1 |
| 12 | 7026 | Wheel Assembly 36" x 6" (Red) | 1 |
| * | 7607 | Wheel Assembly 36" x 6" with Rubber Tread | 1 |
| 13 | 7389 | Hub Cap with Washer and Cotter Pin | 1 |
| 14 | 6814 | Hose Assembly - 50 ft. | 1 |
| 15 | 7411 | Moisture Seal | 1 |
| 16 | 3877 | Gasket, Hose and Nozzle | 6 |
| 17 | 6279 | Ball Valve Assembly | 1 |
| 18 | 6749 | Nozzle Tip (Aerated) | 1 |
| 19 | 7560 | Nozzle Assembly (Ball Valve & Tip) | 1 |

ALL HYDROTEST ADAPTERS - SEE ADAPTERS PAGE

PARTS LIST for 50/100 lb. Carbon Dioxide Wheeled/Stationary Extinguisher Models

333
334
335



| ITEM NO. | PART NO. | DESCRIPTION | STD. PKG. |
|----------|----------|--|-----------|
| 1 | 9891 | Carriage Assembly without Wheels - 333 | 1 |
| 1A | 9903 | Carriage Assembly without Wheels - 334 | 1 |
| 2 | 9618 | Pictogram - 333 | 1 |
| 2A | 9787 | Pictogram - 334 | 1 |
| 3 | 10234 | Wheel Assembly - 16" with Hub Cap, Washers and Cotter Pin - Full Pneumatic | 1 |
| | 7751 | Wheel Assembly - 16" with Hub Cap, Washers and Cotter Pin - Semi-Pneumatic | 1 |
| 3A | 4945 | Hub Cap | 1 |
| 4 | 12470 | Cap - Valve Protector | 1 |
| 5 | 6373 | Valve Lever ("T" Handle - Complete) | 1 |
| 6 | 4000 | Safety Disc Assembly | 6 |
| 7 | 9897 | Valve Stem Assembly | 6 |
| 8 | 0501 | Spring | 6 |
| 9 | 9627 | Retainer | 1 |
| 10 | 9623 | Downtube | 1 |
| 11 | 6100 | Ring Pin, Stainless Steel with Wire | 12 |
| 12 | 1387 | Lock Wire Seal (Yellow) | 500 |
| 13* | 9895 | Valve Assembly Complete with Downtube | 1 |
| 14 | 9892 | Horn Clip with Mounting Hardware | 1 |
| 15 | 9893 | Saddle Top with Hardware - 333 | 1 |
| 15A | 9904 | Saddle Bottom with Hardware - 334 | 1 |
| 16 | 9380 | Horn Holder - 333 | 1 |
| 16A | 9396 | Horn Holder - 334 | 1 |
| 17 | 9365 | Hose Assembly - 333 (15 ft.) | 1 |
| | 9545 | Hose Assembly - 334 (40 ft.) | 1 |
| 18 | 9366 | Shut-off Valve Assembly | 1 |
| 19 | 9899 | Valve Stem Assembly for Shut-off Valve | 6 |
| 20 | 9901 | Spring for Shut-off Valve | 6 |
| 21 | 9896 | Handle with Rubber Cover | 1 |
| 22 | 9369 | Horn & Nozzle | 1 |
| 23 | 8169 | Union (Manifold) - 334 | 1 |
| 24 | 9905 | Manifold (with Union) - 334 | 1 |
| 25 | 13958 | Bumper, Rubber | 12 |
| 26 | 10093 | Cylinder Replacement CO2 - 50 lb. | 1 |
| 27 | 09364 | Horn and Valve Assembly | 1 |

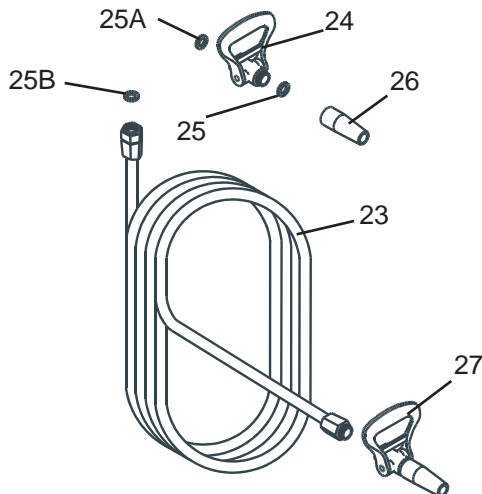
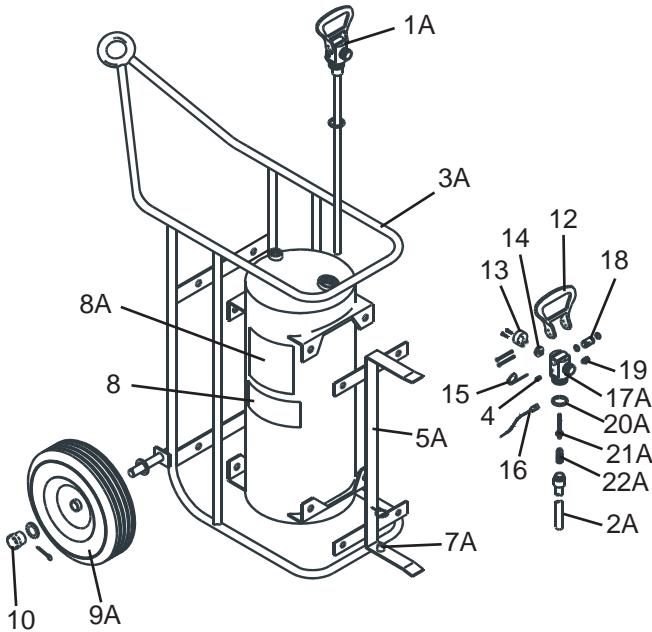
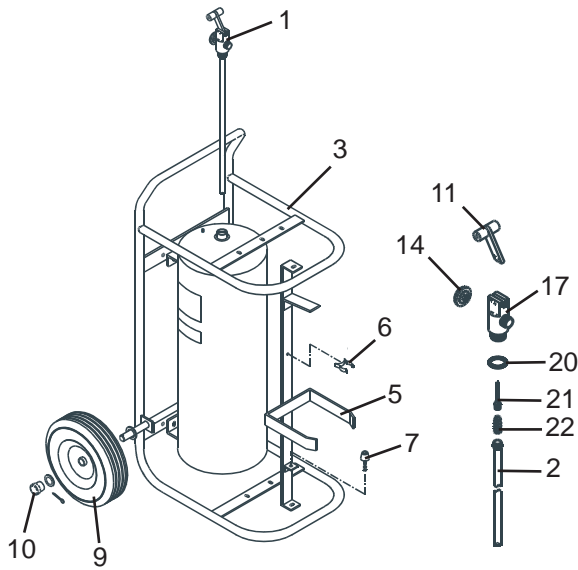
ALL FILL & HYDROTEST ADAPTERS - SEE ADAPTERS PAGE
* NOT SHOWN

PARTS LIST

for

50/150 lb. Stored Pressure Wheeled/Stationary Halon 1211 Extinguisher Models

695 600
611 610



| ITEM NO. | PART NO. | DESCRIPTION | STD. PKG. |
|----------|----------|--|-----------|
| 1 | 6200 | Valve Assembly Complete with Downtube - 695, 611 | 1 |
| 1A | 3499 | Valve Assembly Complete with Downtube - 600, 610 | 1 |
| 2 | 4938 | Downtube/Retainer Assembly - 600, 610 | 1 |
| 3 | 6624 | Carriage Assembly without Wheels - 695 | 1 |
| 3A | 10523 | Carriage Assembly without Wheels - 600 | 1 |
| 4 | 0155 | Pressure Valve Assembly and Cap | 12 |
| 5 | 6379 | Hose Support with Mounting Hardware and Nozzle Mount - 695 | 1 |
| 5A | 6061 | Hose Support with Mounting Hardware and Nozzle Mount - 600 | 1 |
| 6 | 6380 | Nozzle Clip with Hardware - 695 | 1 |
| 7 | 6376 | Nozzle Mount with Hardware - 695 | 1 |
| 7A | 6130 | Nozzle Mount with Hardware - 600 | 1 |
| 8 | 3624 | Nameplate (Label) Non U/L - Model 600 Only | 1 |
| 8A | 7480 | Pictogram - 695, 611 | 1 |
| | 7481 | Pictogram - 600, 610 | 1 |
| 9 | 6381 | Wheel Assembly - 12½" with Hub Cap, Washer and Retaining Pin - 695 | 1 |
| 9A | 6062 | Wheel Assembly - 16" with Hub Cap, Washer and Retaining Pin - Full Pneumatic - 600 (Green) | 1 |
| | 7778 | Wheel Assembly - 16" with Hub Cap, Washer and Retaining Pin - Semi-Pneumatic - 600 (Black) | |
| 10 | 4945 | Hub Cap - 695, 600 | 1 |
| 11 | 6373 | Valve Lever ("T" Handle - Complete) - 695, 611 | 1 |
| 12 | 6059 | Valve Lever with Screws - 600, 610 | 1 |
| 13 | 3562 | Gauge Guard Assembly - 600, 610 | 1 |
| 14 | 3523 | Gauge - 200 PSI - ALL | 1 |
| 15 | 6100 | Ring Pin, Stainless Steel with Wire - ALL | 12 |
| 16 | 1387 | Lock Wire Seal (Yellow) | 500 |
| 17 | 6153 | Valve Body - 695, 611 | 1 |
| 17A | 3678 | Valve Body - 600, 610 | 1 |
| 18 | 6060 | Cam Assembly with O-Rings - 600, 610 | 1 |
| 19 | 3787 | Safety Disc Assembly - 600, 610 | 1 |
| 20 | 5240 | Collar O-Ring - 695, 611 | 24 |
| 20A | 5239 | Collar O-Ring - 600, 610 | 12 |
| 21 | 6022 | Valve Stem Assembly - 695, 611 | 6 |
| 21A | 5067 | Valve Stem Assembly - 600, 610 | 6 |
| 22 | 0383 | Spring - 695, 611 | 6 |
| 22A | 3556 | Spring - 600, 610 | 6 |
| 23 | 6015 | Hose Assembly - 25 ft. with Gasket - 695, 611 | 1 |
| 23A | 3501 | Hose Assembly - 50 ft. - 600, 610 | 1 |
| 24 | 6031 | Ball Valve Assembly - 695, 611 | 1 |
| 24A | 6279 | Ball Valve Assembly - 600, 610 | 1 |
| 25 | 3877 | Gasket, Hose/Valve - 600, 610 | 6 |
| 25A | 6056 | Gasket, Valve - 695, 611 | 6 |
| | 3877 | Gasket, Hose/Valve - 600, 610 | |
| 25B | 7247 | Gasket, Hose - 695, 611 | 6 |
| | 3877 | Gasket, Hose/Valve - 600, 610 | |
| 26 | 6032 | Nozzle Tip (.265) - 695, 611 | 1 |
| | 6355 | Nozzle Tip (.375) - 600, 610 | |
| 27 | 6395 | Nozzle Assembly (Ball Valve & Tip) - 695, 611 | 1 |
| 27A | 5295 | Nozzle Assembly (Ball Valve & Tip) - 600, 610 | 1 |
| * | 6370 | Plug, Pipe for Agent Level Indicator Hole - 600, 610 | 1 |

ALL FILL & HYDROTEST ADAPTERS - SEE ADAPTERS PAGE

Replacement Valve Assemblies include New Valve Body, Gauge, (Gauge Guard, Safety Disc Assembly, Cam - Model 600, 610), Pressure Valve & Cap, Lever, Valve Stem Assembly, Spring and Downtube/Retainer Assembly
* NOT SHOWN

PARTS LIST

for

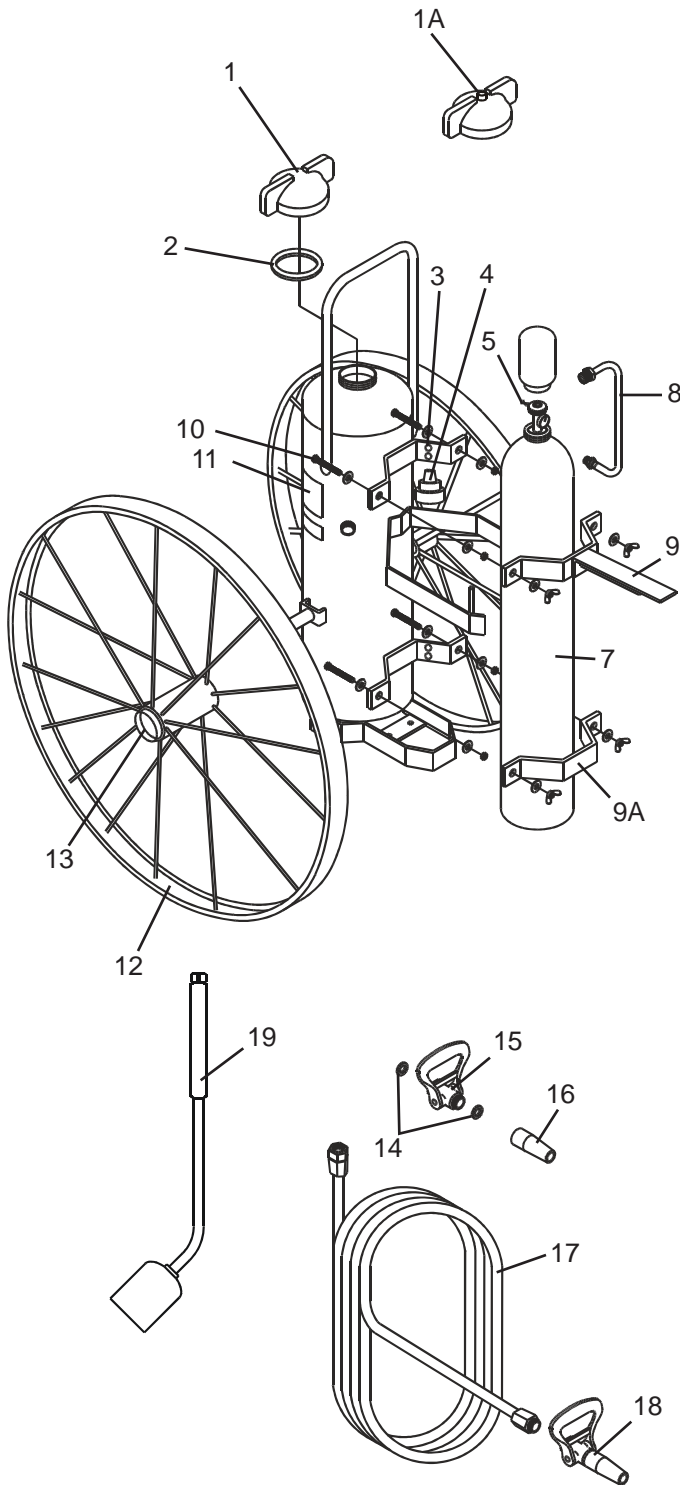
150/250 lb. Class D

110 CU. FT. Nitrogen Cylinder

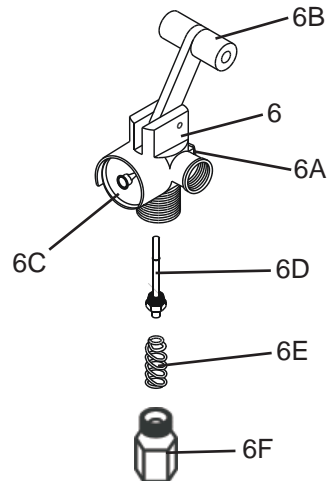
Wheeled

Extinguisher Models

680 - 150 lb. Sodium Chloride
681 - 250 lb. Copper

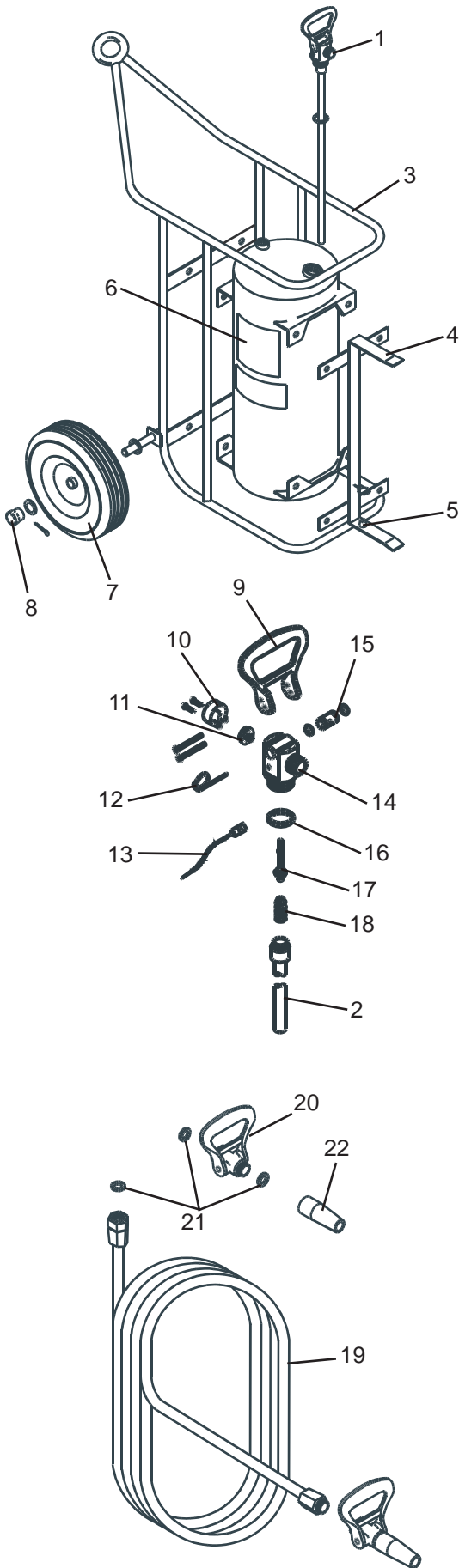


| ITEM NO. | PART NO. | DESCRIPTION | STD. PKG. |
|---|----------|---|-----------|
| 1 | 6993 | Cap, Agent Cylinder | 1 |
| 1A | 12576 | Cap, Agent Cylinder with Pressure Indicator | 1 |
| 2 | 2272 | Gasket, Cap | 1 |
| 3 | 13958 | Bumper, Rubber | 12 |
| 4 | 10915 | Argon Pressure Regulator | 1 |
| 5 | 1387 | Lock Wire Seal (Yellow) | 500 |
| 6 | 12467 | Argon Valve with Gauge ("T" Handle Quick Release) | 1 |
| 6A | 16516 | Safety Disc, Gasket and Nut Assembly | 1 |
| 6B | 6373 | Valve Lever ("T" Handle - Complete) | 1 |
| 6C | 10213 | Gauge - 3000 PSI | 1 |
| 6D | 9897 | Valve Stem Assembly | 6 |
| 6E | 0501 | Spring | 6 |
| 6F | 9627 | Retainer | |
| 7 | 10904 | Argon Cylinder (110 cu. ft.) - Charged with Cap | 1 |
| 8 | 2234 | Nitrogen Hose Assembly | 1 |
| 9 | 10906 | Retaining Strap with Hose Hanger | 1 |
| 9A | 11020 | Retaining Strap (Bottom) - Argon Cylinder | 1 |
| 10 | 16483 | Bolt, Washer and Wing Nut | 1 |
| 11 | 10910 | Pictogram - 680, 681 | 1 |
| 12 | 10917 | Wheel Assembly - 36" x 2½" with Rubber Tread | 1 |
| 13 | 16984 | Hub Cap - 36" Wheels | 1 |
| 14 | 3877 | Gasket, Hose/Nozzle | 6 |
| 15 | 6279 | Ball Valve Assembly | 1 |
| 16 | 6467 | Nozzle Tip (.312) | 1 |
| 17 | 10913 | Hose Assembly - ¾" x 25 ft. | 1 |
| 18 | 6717 | Ball Valve Assembly | 1 |
| 19 | 9740 | Wand Applicator Assembly | 1 |
| ALL HYDROTEST ADAPTERS - SEE ADAPTERS PAGE | | | |
| * Not Shown | | | |



PARTS LIST for 65 lb. Stored Pressure Wheeled Halotron I Extinguisher Model

673



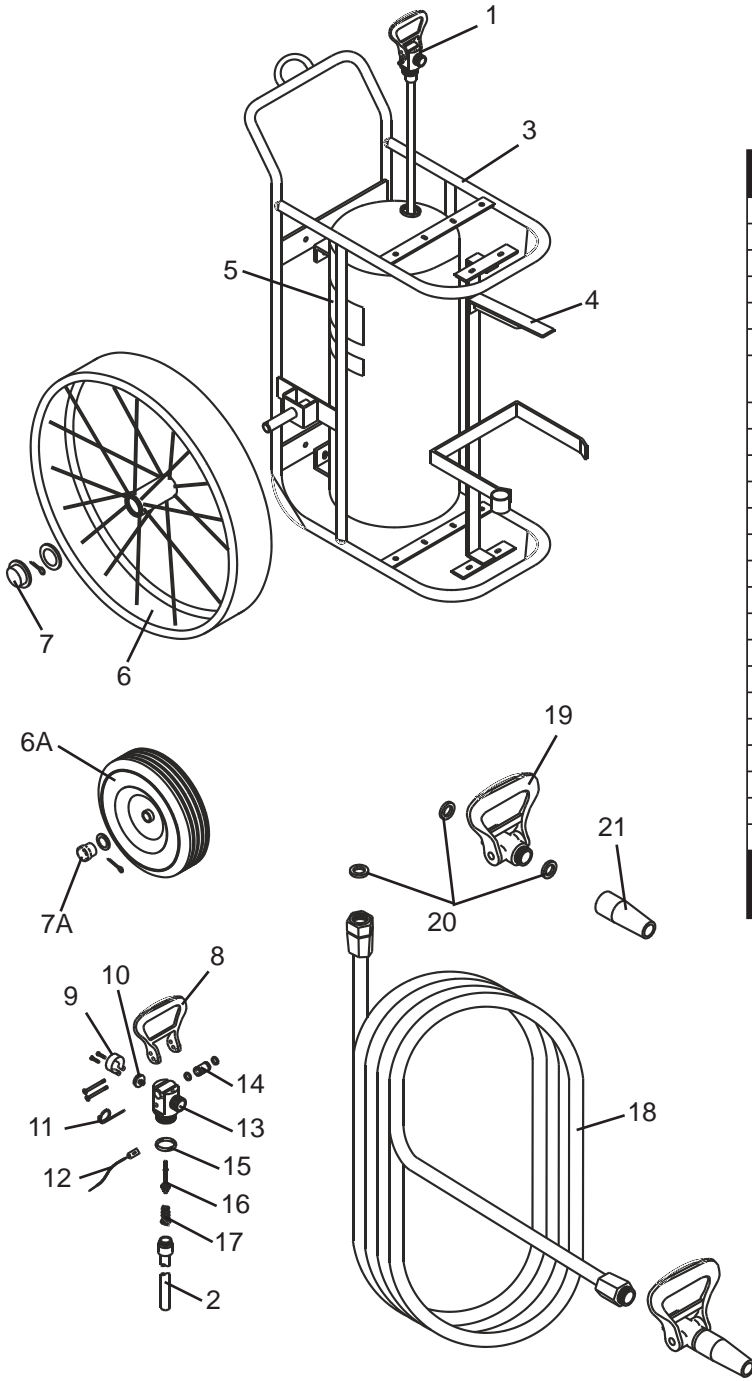
| ITEM NO. | PART NO. | DESCRIPTION | STD. PKG. |
|----------|----------|--|-----------|
| 1 | 16661 | Valve Assembly Complete with Downtube | 1 |
| 2 | 4938 | Downtube/Retainer Assembly | 1 |
| 3 | 16724 | Carriage Assembly without Wheels | 1 |
| 4 | 16690 | Hose Support with Mounting Hardware | 1 |
| 5 | 6130 | Nozzle Mount with Hardware | 1 |
| 6 | 7481 | Pictogram | 1 |
| 7 | 7751 | Wheel Assembly - 16" with Hub Cap, Washer and Retaining Pin - Semi-Pneumatic (Black) | 1 |
| 8 | 4945 | Hub Cap | 1 |
| 9 | 6059 | Valve Lever with Screws | 1 |
| 10 | 16723 | Gauge Guard Assembly | 1 |
| 11 | 14417 | Gauge - 100 PSI | 1 |
| 12 | 6100 | Ring Pin, Stainless Steel with Wire | 12 |
| 13 | 1387 | Lock Wire Seal (Yellow) | 500 |
| 14 | 16666 | Valve Body | 1 |
| 15 | 6060 | Cam Assembly with O-Rings | 1 |
| 16 | 16664 | Collar O-Ring | 24 |
| 17 | 16668 | Valve Stem Assembly | 6 |
| 18 | 3556 | Spring | 6 |
| 19 | 3501 | Hose Assembly - 50 ft. with Gasket | 1 |
| 20 | 6279 | Ball Valve Assembly | 1 |
| 21 | 3877 | Gasket, Hose/Nozzle - 600, 610 | 6 |
| 22 | 16659 | Nozzle Tip (.395) | 1 |

ALL FILL & HYDROTEST ADAPTERS - SEE ADAPTERS PAGE

Replacement Valve Assemblies include Valve Body, Gauge, Gauge Guard, Safety Disc Assembly, Cam, Pressure Valve & Cap, Lever, Valve Stem Assembly, Spring and Downtube/Retainer Assembly

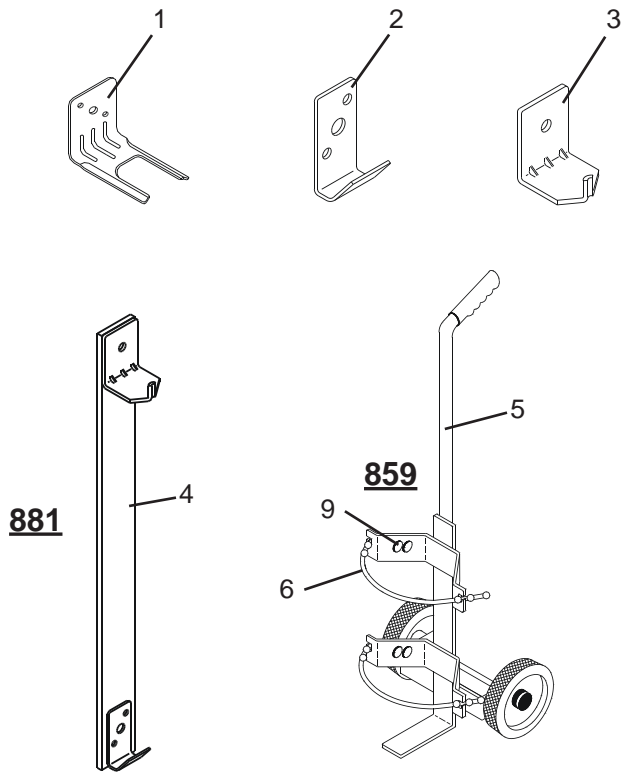
PARTS LIST for 150 lb. Stored Pressure Wheeled Halotron I Extinguisher Model

674
675



| ITEM NO. | PART NO. | DESCRIPTION | STD. PKG. |
|---|----------|--|-----------|
| 1 | 16677 | Valve Assembly Complete with Downtube | 1 |
| 2 | 16726 | Downtube/Retainer Assembly | 1 |
| 3 | 16727 | Carriage Assembly without Wheels | 1 |
| 4 | 16725 | Hose Support with Mounting Hardware | 1 |
| 5 | 7481 | Pictogram | 1 |
| 6 | 7026 | Wheel Assembly - 36" x 6" - (Red) | 1 |
| 6A | 7751 | Wheel Assembly - 16" with Hub Cap, Washer and Retaining Pin - Semi-Pneumatic (Black) | 1 |
| 7 | 16984 | Hub Cap for 36" Wheels | 1 |
| 7A | 4945 | Hub Cap | 1 |
| 8 | 6059 | Valve Lever with Screws | 1 |
| 9 | 16723 | Gauge Guard Assembly | 1 |
| 10 | 14418 | Gauge - 125 PSI | 1 |
| 11 | 6100 | Ring Pin, Stainless Steel with Wire | 12 |
| 12 | 1387 | Lock Wire Seal (Yellow) | 500 |
| 13 | 16666 | Valve Body | 1 |
| 14 | 6060 | Cam Assembly with O-Rings | 1 |
| 15 | 16664 | Collar O-Ring | 24 |
| 16 | 16668 | Valve Stem Assembly | 6 |
| 17 | 16679 | Spring | 6 |
| 18 | 3501 | Hose Assembly - 50 ft. with Gasket | 1 |
| 19 | 6279 | Ball Valve Assembly | 1 |
| 20 | 3877 | Gasket, Hose/Nozzle - 600, 610 | 6 |
| 21 | 16674 | Nozzle Tip (.687) | 1 |
| ALL FILL & HYDROTEST ADAPTERS - SEE ADAPTERS PAGE | | | |
| Replacement Valve Assemblies include Valve Body, Gauge, Gauge Guard, Safety Disc Assembly, Cam, Pressure Valve & Cap, Lever, Valve Stem Assembly, Spring and Downtube/Retainer Assembly | | | |

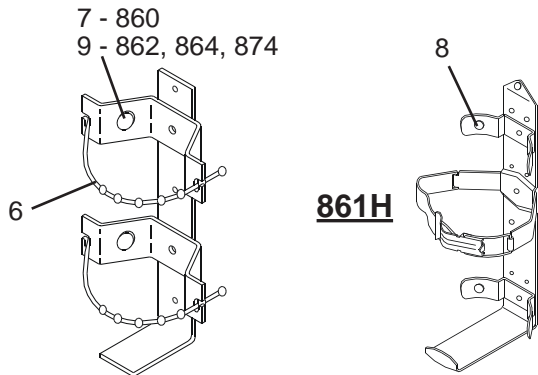
Wall Brackets Miscellaneous Items



881

859

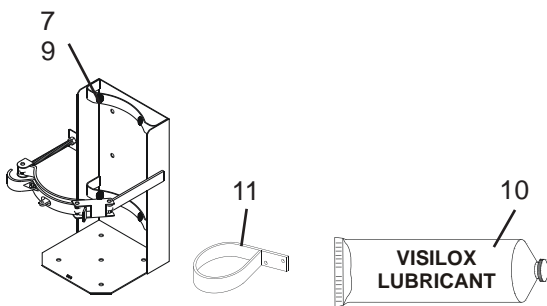
**Heavy
Duty
Rubber
Strap**



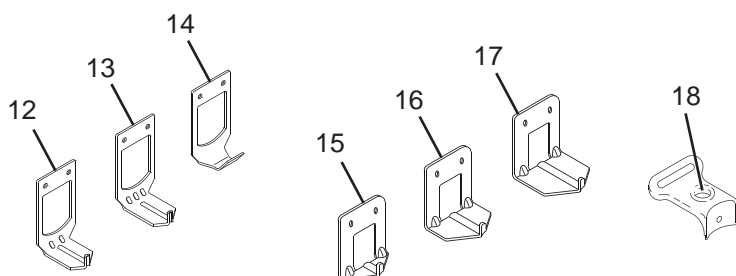
7 - 860
9 - 862, 864, 874

861H

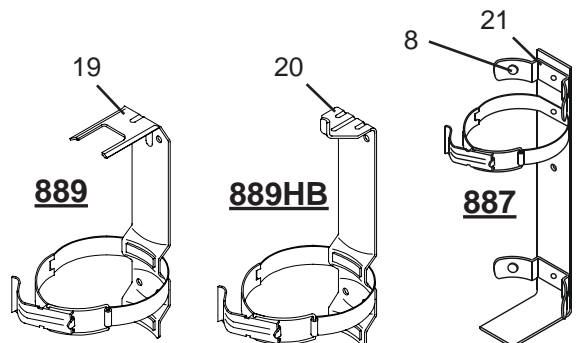
**Heavy
Duty
Box
Type**



**VISOLOX
LUBRICANT**



| PART NO. | PART NO. | DESCRIPTION | STD. PKG. |
|--|----------|---|-----------|
| 1 | 4834 | Wall Hanger Bracket (Red) - All 1 lb., 1¼ lb., 1.4 lb., 2½ lb., 3 lb. Aluminum Valve Models | 6 |
| | 1521 | Wall Hanger Bracket (Red) - All 5 lb. & 5½ lb. Aluminum Valve Models | 6 |
| | 5525 | Wall Hanger Bracket (Red) - All 6 lb. & 10 lb. Tall Aluminum Valve Models | 6 |
| 2 | 1007 | Wall Hanger Bracket (Red) - 240, 250, 252, 254, 361*, 369, B371, 372, 408*, 415*, 419, 423*, 424, B441, B447, B460, 461, 462, A411*, A412*, A413*, 260, 262, B260, B262 (* For extinguishers manufactured before 2004) | 6 |
| | 14315 | Wall Hanger Bracket (Stainless Steel) - Non-Magnetic - 270, 272, B270, B272 | 6 |
| 3 | 9582 | Wall Hanger Bracket (Red) - All 13.2 lb (6Kg) and 20 lb. High Performance | 6 |
| | 9581 | Wall Hanger Bracket (Red) - 30 lb. High Performance | 6 |
| | 0546 | Wall Hanger Bracket (Red) - 322, B369, B441, B461, B462, B456, B457 | 6 |
| | 0575 | Wall Hanger Bracket (Red) - 330, 331 | 6 |
| | 17737 | Wall Hanger Bracket 322NM | 6 |
| | 0577 | Wall Hanger Bracket (Red) - 332, 408*, 415*, 423*, A411*, A412*, A413*, 361*, 372*, B570, B571 (* For extinguishers manufactured 2004 or later) | 6 |
| | 16591 | Wall Hanger Bracket (Red) - B424 & All 5 lb. Aluminum "HB" Models | 6 |
| 4 | 14427 | Wall Hanger Bracket Two Point (Red) - Halotron I Models - 387, 388 | 1 |
| | 15573 | Wall Hanger Bracket Two Point (Red) - Halotron I Models 397, 398 | 6 |
| Miscellaneous Bracket Parts and Carts | | | |
| 5 | 859 | Dolly Cart 7" Diameter | 1 |
| 6 | 7166 | Rubber Strap - 860 & 862 Brackets | 2 |
| | 7802 | Rubber Strap - 864 & 874 Brackets, 859 Dolly | 2 |
| 7 | 1990 | Bumper, Rubber Grommet - 807, 809, 810, 811, 812, 860 | 12 |
| 8 | 6858 | Bumper, Rubber Grommet - 861H, 887, 846 | 6 |
| 9 | 13958 | Bumper, Rubber Grommet - 810G, 811G, 862, 864, 874, 859 | 12 |
| * | 4488 | Adhesive, Silicon (3oz.) - Foot Stand All Stainless Steel Extinguishers | 1 |
| 10 | 6247 | VISOLOX Lubricant (5 oz.) | 1 |
| 11 | 1427 | Horn Holder - 330, 331, 332 (Attaches for 810 and 811 Brackets) | 1 |
| 12 | 16536 | Bracket Adapter - Cartridge Unit to Stored Pressure 6 Kg & 20 lb. High Performance | 1 |
| 13 | 16538 | Bracket Adapter - Cartridge Unit to Stored Pressure 30 lb. High Performance | 1 |
| 14 | 16537 | Bracket Adapter - Cartridge Unit to Stored Pressure Standard "J" Hook Style Wall Bracket | 1 |
| 15 | 16596 | Bracket Adapter - "J" Hook to Pin Hook 5 lb. | 1 |
| 16 | 16598 | Bracket Adapter - "J" Hook to Pin Hook 6 - 10 lb. | 1 |
| 17 | 16594 | Bracket Adapter - "J" Hook to Pin Hook 20 lb. | 1 |
| 18 | 15363 | Hanger Loop Stainless Steel 10 lb. | 1 |
| 19 | 889 | Bracket Assembly - 10 lb. 5" Dia. "Fork" Style | 6 |
| 20 | 889HB | Bracket Assembly - 10 lb. 5" Dia. "Pin Hook" | 6 |
| 21 | 887 | Vehicle Bracket (Red) - All 10 lb. Tall Aluminum & Brass Valve Models | 6 |



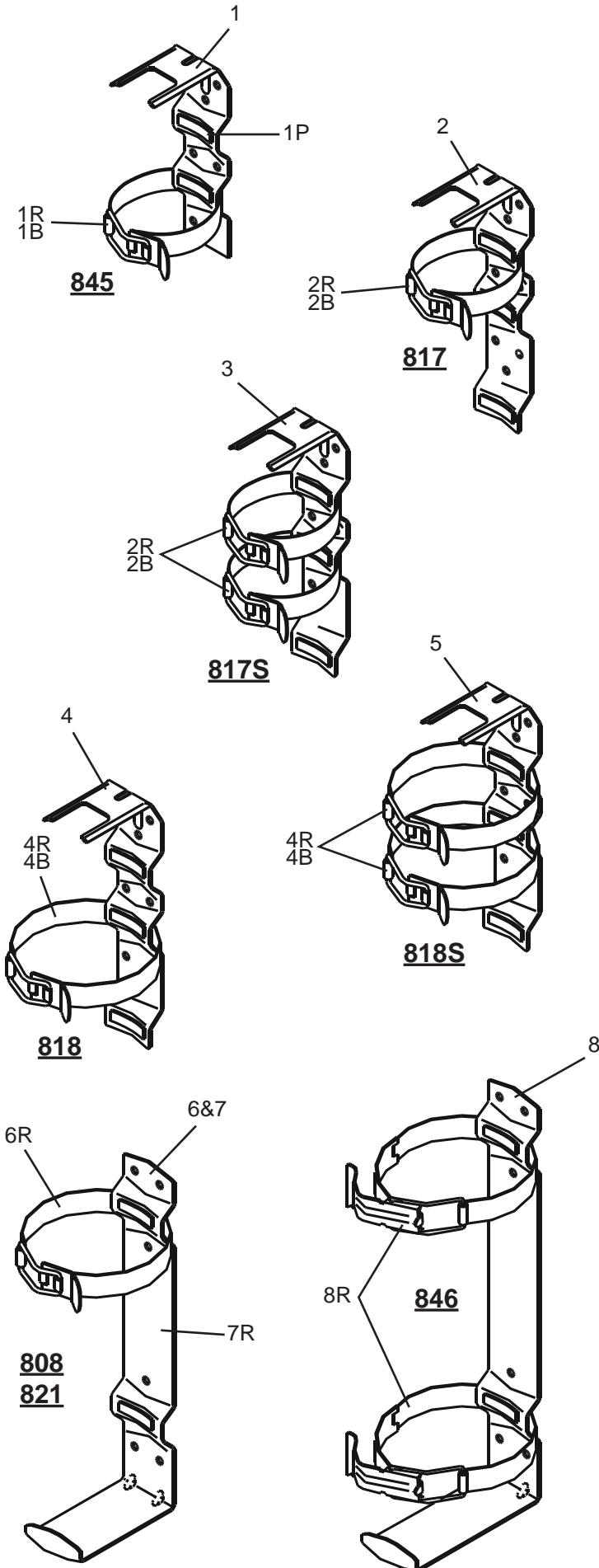
889

889HB

887

Parts List

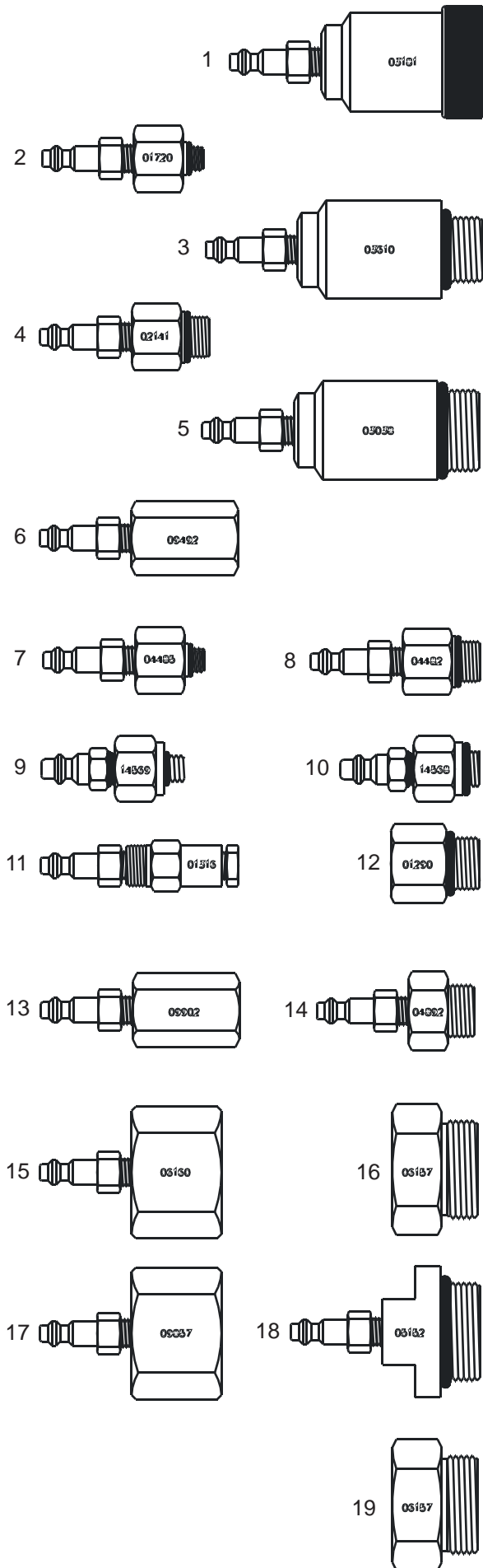
Vehicle, Vehicle/Marine Bracket Components



| ITEM NO. | PART NO. | DESCRIPTION | STD. PKG. |
|----------|----------|---|-----------|
| 1 | 845 | Vehicle Bracket (Red) - All 1 lb., 1¼, 1.4 lb. Aluminum Valve Models | 6 |
| 1R | 6070 | Strap Assembly with Rivet (Red) - 845 | 6 |
| 1 | 845B | Vehicle Bracket (Black) - 344/344T, A384T, A620 (Chrome Models) | 6 |
| 1B | 5695 | Strap Assembly with Rivet (Black) - 845B | 6 |
| 1P | 3412 | Rubber Pad - ½" x 1½" - 845, 817, 817S, 818, 818S, 878, 821, 808, 846 | 100 |
| 2 | 817 | Vehicle/Marine Bracket (Red) - All 2½ lb., 3 lb. Aluminum Valve Models | 6 |
| 2R | 4494 | Strap Assembly with Rivet (Red) - 817 | 6 |
| 2 | 817B | Vehicle/Marine Bracket (Black) - 2½ lb. Chrome | 6 |
| 2B | 3905 | Strap Assembly (Black) - 817B | 6 |
| 3 | 817S | Vehicle/Marine Bracket (Red) - 2 Strap All 2½ lb., 3 lb. Aluminum Valve Models | 6 |
| 4 | 818 | Vehicle/Marine Bracket (Red) - All 5 lb., 5½ lb. Aluminum Valve Models | 6 |
| 4R | 4495 | Strap Assembly with Rivet (Red) - 818 | 6 |
| 4 | 818B | Vehicle/Marine Bracket (Black) - 818B | 6 |
| 4B | 3906 | Strap Assembly with Rivet (Black) - 818B | 1 |
| 5 | 818S | Vehicle/Marine Bracket (Red) - 2 Strap All 5 lb., 5½ lb. Aluminum Valve Models | 6 |
| 6 | 821 | Vehicle/Marine Bracket (Red) - All 5 lb., 5½ lb. Aluminum & Brass Valve Models | 4 |
| 6R | 6201 | Strap Assembly with Rivet (Red) - 821 | 6 |
| 7 | 808 | Vehicle/Marine Bracket (Red) - All 6 lb., 9 lb., Aluminum & Brass Valve Models | 4 |
| 7R | 6064 | Strap Assembly with Rivet (Red) - 808 | 6 |
| 8 | 846 | Vehicle Bracket (Red) - 10 lb. Tall Aluminum & Brass Valve Models | 1 |
| 8R | 15381 | Strap Assembly with Rivet (Red) - 846 | 6 |

Adapters

Fill (Recharge) & Hydrotest (Cylinder & Hose)



| ITEM NO. | PART NO. | DESCRIPTION | STD. PKG. |
|---|--------------------------|---|-----------|
| Water, Water Mist, Wet Chemical & Foam Extinguishers | | | |
| 1 | 3181 | Hydrotest Adapter | 1 |
| 4* | 2141 | Fill Adapter - Hansen Quick Connect - 240, 250, 252, 254, 260, 262 | 1 |
| 6* | 9492 | Fill Adapter - Hansen Quick Connect - B270, B272, B260, B262 | 1 |
| Dry Chemical - Aluminum Valve Extinguishers | | | |
| 2 | 1720 | Fill Adapter - Hansen Quick Connect - 3/8"-24 UNF | 1 |
| 3* | 3610 | Hydrotest Adapter - 1"-12 UN2B | 1 |
| 4* | 2141 | Fill Adapter - Hansen Quick Connect 5/8" UNF (20 lb. Aluminum Valve) | 1 |
| Dry Chemical - Brass Valve, High Performance, CL-D Extinguishers (Female Thread) | | | |
| 4* | 2141 | Fill Adapter - Hansen Quick Connect 5/8" UNF | 1 |
| 5* | 3038 | Hydrotest Adapter - 1/4"-12 UN2B | 1 |
| High Performance Extinguishers (Male Thread) | | | |
| 6* | 9492 | Fill Adapter - Hansen Quick Connect | 1 |
| 5* | 3038 | Hydrotest Adapter - 1/4"-12 UN2B | 1 |
| Halon 1211 - Aluminum Valve Extinguishers | | | |
| 7 | 4485 | Fill Adapter - Hansen Quick Connect - 3/8"-24 UNF | 1 |
| 3* | 3610 | Hydrotest Adapter - 1"-12 UN2B | 1 |
| Halon 1211 - Brass Valve Extinguishers | | | |
| 8 | 4482 | Fill Adapter - Hansen Quick Connect - 5/8" UNF | 1 |
| 5* | 3038 | Hydrotest Adapter - 1/4"-12 UN2B | 1 |
| Halotron I - Aluminum Valve Extinguishers | | | |
| 9 | 14569 | Fill Adapter - Snap Tite Quick Connect - 3/8"-24 UNF | 1 |
| 3* | 3610 | Hydrotest Adapter - 1"-12 UN2B | 1 |
| Halotron I - Brass Valve Extinguishers | | | |
| 10 | 14568 | Fill Adapter - Snap Tite Quick Connect - 5/8" UNF | 1 |
| 5* | 3038 | Hydrotest Adapter - 1/4"-12 UN2B | 1 |
| Carbon Dioxide - All CO2 Hand Portable Extinguishers | | | |
| 11 | 1316 | Fill Adapter - Hansen Quick Connect | 1 |
| 12 | 1290 | Hydrotest Adapter 1-1/8" Thread | 1 |
| Carbon Dioxide - Wheeled 50 lb. and 100 lb. Extinguishers | | | |
| 13 | 9902 | Fill Adapter - Hansen Quick Connect | 1 |
| 14* | 4892 | Hydrotest Adapter | 1 |
| Wheeled Stored Pressure - Dry Chemical, Halotron I and Halon 1211 | | | |
| 15* | 6160 | Fill Adapter - Hansen Quick Connect 50 lb. Dry Chemical and Halon 1211 | 1 |
| 5* | 3038 | Hydrotest Adapter - 1/4"-12 UN2B | 1 |
| 16 | 6157 | Hydrotest Adapter (Hose) (Male Plug) - Use with P/N: 6160 for 1/2" x 25 ft. Hose Assembly | 1 |
| 17* | 9857 | Fill Adapter - 125, 150 & 250 lb. Dry Chemical 150 lb. Halon 1211, 65 lb., 150 lb. Halotron I | 1 |
| 18* | 5152 | Hydrotest Adapter (Cylinder) - 125, 150 & 250 lb. Dry Chemical 150 lb. Halon 1211, 65 lb., 150 lb. Halotron I | 1 |
| 19* | 5723 | Hydrotest Adapter (Hose) - Use with P/N: 9857 for 3/4" x 1" x 50 ft. Hose Assembly | 1 |
| Wheeled Nitrogen Cylinder Operated - Dry Chemical, Foam, Class D | | | |
| 14* | 4892 | Hydrotest Adapter for Gas Cylinder | 1 |
| Hose Hydrotest Adapters - Use P/N: 9857 Fill Adapter and 5723 (Male Plug) for Testing 3/4" and 1" Hose Assemblies (125/150, 300/350 lb. Dry Chemical, 33 Gal. Foam and 150/250 Class D Models) | | | |
| * ADAPTER CAN BE USED ON MORE THAN ONE TYPE EXTINGUISHER | | | |
| Replacement Orings / Gaskets for Adapters | | | |
| PART NO. | DESCRIPTION | STD. PKG. | |
| 1532 | Oring for Item: 2, 7, 9 | 24 | |
| 6978 | Oring for Item: 4, 8, 10 | 24 | |
| 5241 | Oring for Item: 3 | 24 | |
| 5240 | Oring for Item: 1, 5 | 24 | |
| 9494 | Gasket for Item: 6 | 6 | |
| 1124 | Oring for Item: 12 | 24 | |
| 6056 | Gasket for Item: 15 | 6 | |
| 3877 | Gasket for Item: 17 | 6 | |
| 5239 | Oring for Item: 18 | 12 | |

AMEREX SERVICE/MAINTENANCE MANUALS

(Free download from Amerex web site - www.amerex-fire.com - located under "Products")

- 05601 Hand Portable - 2½ Gal. Water - Model 240**
- 05602 Hand Portable Dry Chemical - ABC, Regular & Purple K**
- 05603 Hand Portable Carbon Dioxide - Models 322, 330, 331, 332**
- 05604 Hand Portable Halon 1211 (see amendment)**
- 05605 Wheeled - 125/150 Lb. N₂ Cyl. Operated -Models 450, 451, 452, 467, 468, 469, 470, 471, 472
Stationary - Models 481, 482, 483, 484, 485, 486**
- 05607 Hand Portable - Premix Foam - Models 254 (6 Liter AFFF), 250 (2½ Gal. AFFF) & 252 (2½ Gal. FFFP)**
- 05608 Wheeled - 125/150 Lb. Stored Press.Dry Chemical - Models 488, 489, 490
Stationary - Models 476, 477, 478**
- 05612 Wheeled - 50 Lb. Stored Press. Dry Chemical - Models 495, 496, 497
Stationary - Models 473, 474, 475**
- 05614 Wheeled - 300/350 Lb. N₂ Cylinder Operated Dry Chemical - Models 491, 492, 493
Stationary - Models 464, 465, 466**
- 05615 Wheeled & Stationary - 33 Gal. N₂ Cylinder Operated FFFP Foam - Models 630 & 631**
- 05616 Hand Portable - 13.2, 20 & 30 Lb. HIGH PERFORMANCE Dry Chemical**
- 05617 Wheeled - 250 Lb. HIGH PERFORMANCE Dry Chemical - Models 573, 574, 575**
- 05618 Wheeled - 50 & 100 Lb. Carbon Dioxide - Models 333, 334, 335**
- 05619 Hand Portable - 30 Lb. Class D (Copper) - Model 571**
- 05620 Wheeled - Class D - 150 Lb. Class D (Sodium Chloride) - Model 680 and 250 Lb. Copper - Model 681**
- 08220 Hand Portable - 30 Lb. Class D (Sodium Chloride) - Model 570**
- 13259 Hand Portable - 6 Liter & 2½ Gal. "Class K" Wet Chemical - Models 260 & 262**
- 14167 Hand Portable - 2½ Gal. and 1¾ Gal. Water Mist - Model 272, 270**
- 14425 Hand Portable - 1.4, 2½, 5, 11 & 15½ Lb. Halotron I**
- 16672 Halotron I Wheeled extinguishers 673, 674, 675**

AMEREX MSDS (Material Safety Data Sheets)

Note: MSDS information may be downloaded and/or printed directly from the Amerex Web Page. Go to www.amerex-fire.com, select "MSDS" and download the MSDS information you require.

Amerex Videos

The following is a list of fire extinguisher videos available from Amerex, on the line of Amerex portable and wheeled extinguishers.

- Model B260 “K” Class extinguisher Running time: 10 minutes
- High Performance extinguishers Running time: 9 minutes
- Wheeled extinguishers Running time: 10 minutes
- Halotron I extinguishers Running time: 6 minutes
- Foam extinguishers Running time: 8 minutes